

SOCIETY

INTERIORS® DESIGN

www.societyinteriorsdesign.com

Studio Lotus: Shaping Cultural Narratives in Interior Architecture

Morphogenesis, Creative Designer Architects,
Sona Reddy Studio, Rohit Kapoor, Amey Dahanukar,
Geeta Arya, Shibani Mehta, Sachin and Neha Gupta,
Babu Cherian, Apeksha Naik, Ankita Baid.

Exclusive Coverage

SOCIETY
INTERIORS®
DESIGN

COMPETITION
& AWARDS 2024

21ST EDITION

#SIDCA2024

AN INITIATIVE BY

MAGNATE PUBLISHING
PRIVATE LIMITED

POWERED BY

ALUCOBOND



LUXURY FOR EVERYONE



A wide collection of designer Art Basins



Top of the line Intelligent Water Closet with built-in smart technology



Sophisticated design and robust engineering come together to create the Plumber Bathware range. Now it's your turn to transform your functional space into a personal wellness oasis.

LIFETIME WARRANTY ON FAUCETS*

PLUMBER BATHWARE

SANITARYWARE • FAUCETS • SHOWERS • ACCESSORIES

*Visit our website for details.

AND YOU THOUGHT WE ARE ONLY INTO TILES?

Turn your bathrooms into a work of art with Johnson Bathrooms. A leading brand synonymous with tiling solutions and a legacy of 66 years, Johnson brings to you a wide range of sanitaryware, faucets and bath accessories. We have a select line of sanitaryware that comes with a unique germ-free feature for better hygiene. So, for a bathroom makeover, treat it special, with Johnson.

 **JOHNSON**[®]
BATHROOMS
Sanitaryware | Faucets | Tiles





RANGE OF SOLUTIONS ▶ uPVC | Aluminium | Doors | Façades

Nationwide Footprint Across 350+ Cities

Call: 1800 102 9880 (Toll Free) | 74286 91568 | response@fenesta.com | www.fenesta.com

Science@work



Prevents
Dust Buildup



Sound
Insulation



Keeps out
Rain*



Thermal
Insulation

T&C Apply.

Only The Best Of Outside Inside Your Home

Keep the Outside Outside... Forever

Your home is your sanctuary. Shield it from outside noise, dust, pollution and rain*.

Switch to Fenesta and let only nature nourish your home and your life.

Fenesta 
Better by Design



COLOUR PALETTE



SOCIETY
**INTERIORS
&
DESIGN**

www.societyinteriorsdesign.com

Publisher: Magnate Publishing Private Limited

Consulting Editor: Swati Balgi

Contributer: Priya Prabhu

Graphic Designer: Syed Zaid Inamdar

Business Heads

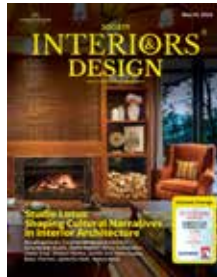
National, West Zone: Sunil Khavnekar +91 9820303096 Preeti Nair +91 9892746767

North Zone: Ravi Roushon +91 9818198689

South Zone: Rekha Kambhoj +91 9845587253

East Zone: Ashim Banik +91 9830056642

Gujarat: Madan Menon +91 9898002522



Contents

Cover Story

Studio Lotus, a globally renowned, multidisciplinary design firm's works are distinguished by 'conscious design' principles. **08**

Lifestyle

The bungalow in Goa designed by Beyond Designs is characterized by clean, tranquil spaces reminiscent of Mediterranean style. **20**

Ar. Geeta Arya designs a deluxe bungalow KALPDRUM, a seamless blend of timeless elegance and modern opulence. **26**

Naksh Design Studio, this all-white masterpiece syndicates modern sophistication with minimalist elegance **32**

The home designed by Babu Cherian harmonizes innovative adaptability with creative brilliance **34**

Restoration

Raja's Cottage, renovated by Ar. Apeksha Naik, is a harmonious amalgam of tradition and modernity. **40**

Workstation

Virescent Infrastructure Mumbai office, effortlessly interweaves versatility and simplicity with its sophisticated design language. **48**

Rohit Kapoor's painstaking design for a lawyer's office, results in a warm and inviting atmosphere. **50**

The Adani Miracle Mile, is an innovative office designed by Morphogenesis. **56**

Anirudh Damani's office designed by Ark and arts is a fitting example of innovation, functionality and lavishness. **64**

Restaurant Design

Designed by Sona Reddy Studio, Telugu Medium a gastronomic have that promises an immersive dining experience. **68**

Healthcare Institute

The Northern Railway Diagnostic Center, exemplifies India's healthcare advancement. **74**

Special report

Society Interiors Design Competition & Awards 2024 pays tribute to the design visionaries for their design excellence **78**

Product Section

The latest round-up of products, furniture and furnishing. **138**

Society Interiors & Design is published once every month by Magnate Publishing Private Limited, 501, La-creme CHS Ltd, Kondivita VLG, MIDC, Andheri(e), Near Akruiti Trade Center, Mumbai, Maharashtra, India, 400059. Tel No: +91-993-0061-674. Editorial texts and illustrations are the copyright of the publishers of this magazine. No one may reproduce any material before permission is obtained in writing.

All disputes are subject to the exclusive jurisdiction of competent courts and forums in Mumbai (India) only.

2022 Copyright Magnate Publishing Private Limited.

Please address all your advertising, subscriptions and trade enquiries for to: Magnate Publishing Private Limited, 501, La-creme CHS Ltd, Kondivita VLG, MIDC, Andheri(e), Near Akruiti Trade Center, Mumbai, Maharashtra, India, 400059. Tel No: +91-993-0061-674. Email: info@magnatepublishing.in

MAGNATE PUBLISHING IS NOT RESPONSIBLE FOR ANY CLAIM MADE BY THE ADVERTISER

Editor's Note

From visionary architects who reimagine skylines to interior designers who transform spaces into living works of art, there is no shortage of talent in this dynamic field. Each professional brings their unique perspective, skills, and passion to the table, pushing boundaries and shaping the way we experience the world around us. With a constant influx of fresh ideas and a commitment to excellence, the architecture and interior design industry continues to thrive, fueled by the boundless creativity of its talented professionals.

The Society Interiors Design Competition & Awards 2024 recognized esteemed senior professionals while providing students with a platform to compete against each other, fostering a lifetime of learning experiences. Read our special report to know more about the grand event.

Our cover story showcases the remarkable journey of Studio Lotus, led by Ankur Choksi, alongside co-founders Ambrish Arora and Sidhartha Talwar, Choksi the firm has designed groundbreaking projects in the Hospitality, Residential, and Adaptive Reuse sectors.

In the cityscape section, Ten X Habitat unveils a cutting-edge clubhouse, seamlessly blending design modernization with operational excellence.

In our Lifestyle section, we feature unique residences each different from the other, if Goa Residence, crafted by Beyond Designs, epitomizes the tranquil Mediterranean style with its clean, serene spaces. Meanwhile, Ar. Geeta Arya curates the luxurious bungalow KALPDRUM, blending timeless elegance with modern opulence. Naksh Design Studio's all-white masterpiece merges modern sophistication with minimalist elegance, while LS Babu's innovative home design harmonizes adaptability with creative brilliance.

Ar. ApekshaNaik's restoration of Raja's Cottage transforms it into a harmonious fusion of tradition and modernity, which is truly admirable.

The workstation section showcases Virescent Infrastructure Mumbai office, designed by ARA Designs, which seamlessly blends versatility and simplicity. Rohit Kapoor crafts a warm and inviting atmosphere for a lawyer's office, while Morphogenesis introduces an innovative office design for the Adani Miracle Mile. Ark and Arts' design for Anirudh Damani's office stands as a testament to innovation, functionality, and lavishness.

In the restaurant design segment, Telugu Medium, designed by Sona Reddy Studio, promises an immersive dining experience. Creative Designer Architects exemplify India's healthcare advancement with the Northern Railway Diagnostic Center in the Healthcare Institute section.

I hope you enjoy this wholesome. Do get back to us with your feedback.

Regards,

- Swati Balgi



Studio Lotus: Pioneers of Conscious Design and Architectural Excellence

Studio Lotus is a globally renowned, multidisciplinary design firm that specializes in Master Planning, Architecture, and Interior Design. Their work is distinguished by 'conscious design' principles, which prioritize local resources, cultural influences, inclusivity and meticulous attention to detail. Read on to know more...

Ankur Choksi, a graduate of the National Institute of Design, Ahmedabad, transitioned from graphic and exhibition design to interior and architectural design. His approach is narrative-driven, drawing inspiration from regional context and culture while adapting to evolving luxury paradigms. Co-founding Studio Lotus with Ambrish Arora and Sidhartha Talwar, Ankur oversees the Interior Architecture division, leading large-scale projects in the Hospitality, Residential and Adaptive Reuse segments.

Notable projects include the design of key landmarks such as the Imagine Studio at The Trees development for Godrej in Mumbai, innovative hotels for groups like RAAS, Oberoi and Taj and the pioneering senior living community Antara in Dehradun.

Ankur actively promotes design excellence through academic engagements and community involvement, serving as a visiting faculty member and juror at institutions like NID and NIFT. He has also been a panelist at prestigious events such as the World Architecture Festival (WAF), including the WAF China Awards, and FIND's Global Summit in Singapore.

His contributions extend to advisory roles, including membership on the advisory board at FIND (Design Fair Asia), where he has discussed the profound impact of culture on architecture and the importance of leaving a sustainable legacy. Studio Lotus' commitment to innovation and excellence has earned them numerous accolades, cementing their position as leaders in the design industry.





In an exclusive interview with Society Interiors and Design, Ambrish Arora, Founding Principal of Studio Lotus, offers insights into their journey, the thought process driving their projects, and much more.

What are the thoughts that cross your mind when you take on new projects?

First and foremost, we are interested in really understanding why a client has come to us; and what their reasons are for choosing to work with Studio Lotus. As to why that's important to us, it's to ensure there's an alignment of values. For us, more than the typology and the programme, it is key that the client is committed to use design as a tool to improve the quality of life or quality of experience of the project, and that it's not purely a numbers-driven exercise. While profitability and financial viability are an intrinsic component, there must be something beyond just maximizing profit in value-creation. If profitability alone is the driver, it often ends up creating a soulless project. Secondly, a problem we sometimes face, especially in the case of larger projects, be they corporate or institutional, is the lack of collaboration at the conceptual level.

There needs to be a buy-in or an engagement of stakeholders, especially from the client's side, at the strategic, vision-setting level. Otherwise, it becomes difficult to push the envelope, to question, to add value to the programme, which is the level at which the most significant value-addition can be created.

For us, what is crucial is that the end outcome is achieved in a way that can also add value to larger parameters, such as our core drivers of environmental, social and cultural sustainability, to look at localisation as a technique and to also engage with and reinvent conventional solutions and address innovation. We believe innovation is a collaborative process. And if it is left solely to us to do, it becomes difficult to push the agenda because there is no partnership. Because the innovation is done for the client, there needs to be someone from the client side who is committed to engaging, and who acts as an anchor. So, that's the other things we check.

Do you find it difficult to consistently develop innovative ideas for such diverse needs?

Innovation to us is not a big 'wow' or a 'eureka' moment. That's why I would interpret this question as "Do we have the opportunity to do innovative work for every single project?" So, do we? Yes, 100%. And that is a function of the process we follow, where right from the time we get the brief to the decisions made at every stage of the project—whether it is a concept, design development, detailing, or execution—there's an opportunity to innovate at every step. So, as long as the right questions are being asked at each stage, one can innovate. Even selecting a contractor or engaging in a contract gives the opportunity for innovation. So, every project and every stage allows for some degree of innovation.

What are your best personal experiences while working with a diverse national and international clientele?

Building on the first answer, I think our best personal experiences are when we have clients who are passionately engaged in the process and the outcome; clients who are willing to go beyond the obvious and push themselves and push us out of our comfort zone, to address aspects of a project that at surface value might not be the primary goal. That's one of the many reasons why our partnership with RAAS has been particularly rewarding. We have a client who is deeply engaged in not just having a profitable hotel, but setting benchmarks of how their projects can add value to the socio-cultural context. In the process, this also sets new design and hospitality benchmarks. This is true for any kind of client, be it an interior client or a government client. With the government, it can be even more rewarding because the impact of projects is on a far greater scale. When there's a client who is committed to something bigger than the immediate problem-solving approach of a project, those are the most rewarding associations.





What type of projects challenge you the most?

Oddly enough, the most challenging projects are the ones that have no challenge. The ones that are on very tight sites, or have a lot of constraints, or a tight set of parameters are easier to work on because the parameters themselves offer a design challenge which then is exciting and easy to respond to, and allows for innovation.

I think the most challenging projects are the ones where a client comes in and says ‘This is the site, there is no budget, build what you like’ which rarely happens. And to that degree, even some of the large homes we do are relatively challenging because it is up to the whim of one person even though there may be fewer constraints in terms of the site context or the budget. The ones which are the most easy-going in terms of space and budget are what we find most challenging.

Having won so many national and international awards, is there something more coveted that you aspire for?

I don’t think awards are something we aspire for. They’re an effective means for us to get our work out, and for our values and process to be shared. The thing we really aspire for, and covet most, is to continue to find, attract, and reach out to partners on this journey—clients, collaborators and team members—who share and are inspired by a similar set of values. We would like to make a difference in the way architecture and interior design is practised—with a high degree of consciousness in the process of the impact that we have on the environment, on society, and on the physical fabric of where we build.

I think we aspire to be able to build this ecosystem—and it doesn’t have to be a Studio Lotus ecosystem—where more and more people are conscious and can widen their spheres of influence, where their clients, contractors, or developers are encouraged to build with consciousness and care.

What are your forthcoming projects?

Some of our forthcoming projects are a School of Leadership for the Piramal Group in Jaipur, high-rise residential and commercial real estate projects for the Max Group in the NCR, a museum complex for the Aga Khan Foundation in the Qutb Shahi Gardens, Hyderabad, a gallery-cum-retail store in Jaipur, and the Odia university—a school for languages that should be finished this year. In the hospitality space, we are currently working on a boutique resort in the Andamans and an Oberoi Resort in Bandhavgarh that will open to the public in October. We have recently completed two hotels for the Taj group, with another two that are ongoing. The Taj Taal Kutir is a 75-key hotel in New Town, Kolkata, and the Taj Guras Kutir, a 69-key resort in Sikkim has just recently opened to the public. Join us as we curate a selected project showcasing the transformative power of design through the lens of Studio Lotus.

Masti Dubai 2.0

The design of the restaurant Masti, which was relocated from La Mer to a new location at The Dubai Edition hotel, is characterised by a meticulous approach to reuse and repurposing.

Familiar details such as the stained-glass 3D elephant installation, and custom-designed millwork and furniture by Mangrove Collective have been preserved to recall memories of the former restaurant while celebrating it in its new avatar. New interventions include a kaleidoscopic entrance tunnel with some clever use of mirrors that create the illusion of openness, and a glowing live kitchen clad in glass bricks inspired by the embers of a traditional andoor.

In contrast to conforming to design trends, the space possesses a unique charm, retaining identity through the repurposing of various elements, yet uncompromising on the creation of a deeply luxurious dining experience. The result challenges the notion that luxury spaces require entirely new and custom-made elements, showcasing Studio Lotus' commitment to minimal new interventions and maximal repurposing.

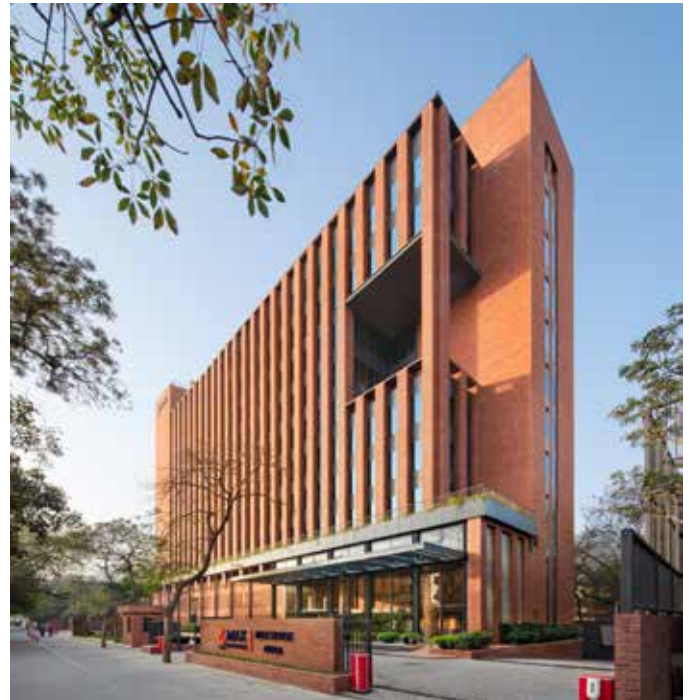




Max House, New Delhi

Max House is an office campus developed for Max Estates, the real estate arm of the Max Group. The building's design aims to reflect the brand's underlying philosophy of sustainability, resilience, and environmental harmony. Two of the towers are greenfield developments that accommodate a myriad of workspaces; the third is an adaptive reuse intervention that converts an existing structure on the site into a recreational hub.

Referencing nearby industrial structures such as the Modi Flour Mills compound, the office blocks at Max House feature a distinctive façade in local brickwork. The design incorporates several measures that bring down the buildings' energy consumption. The façade, composed of hollow brick masonry, insulated spandrel panels, and double-glazed Units (DGUs), is engineered to cut out glare and create a thermal buffer, lowering operating costs. Lifts and services, placed along the end of the building, also ensure maximum flexibility in terms of spatial use and configuration. The building's focus on environmental sustainability and aspects of employee health and well-being has earned it an IGBC Health and Well-Being Gold rating, in addition to a LEED Gold certificate.

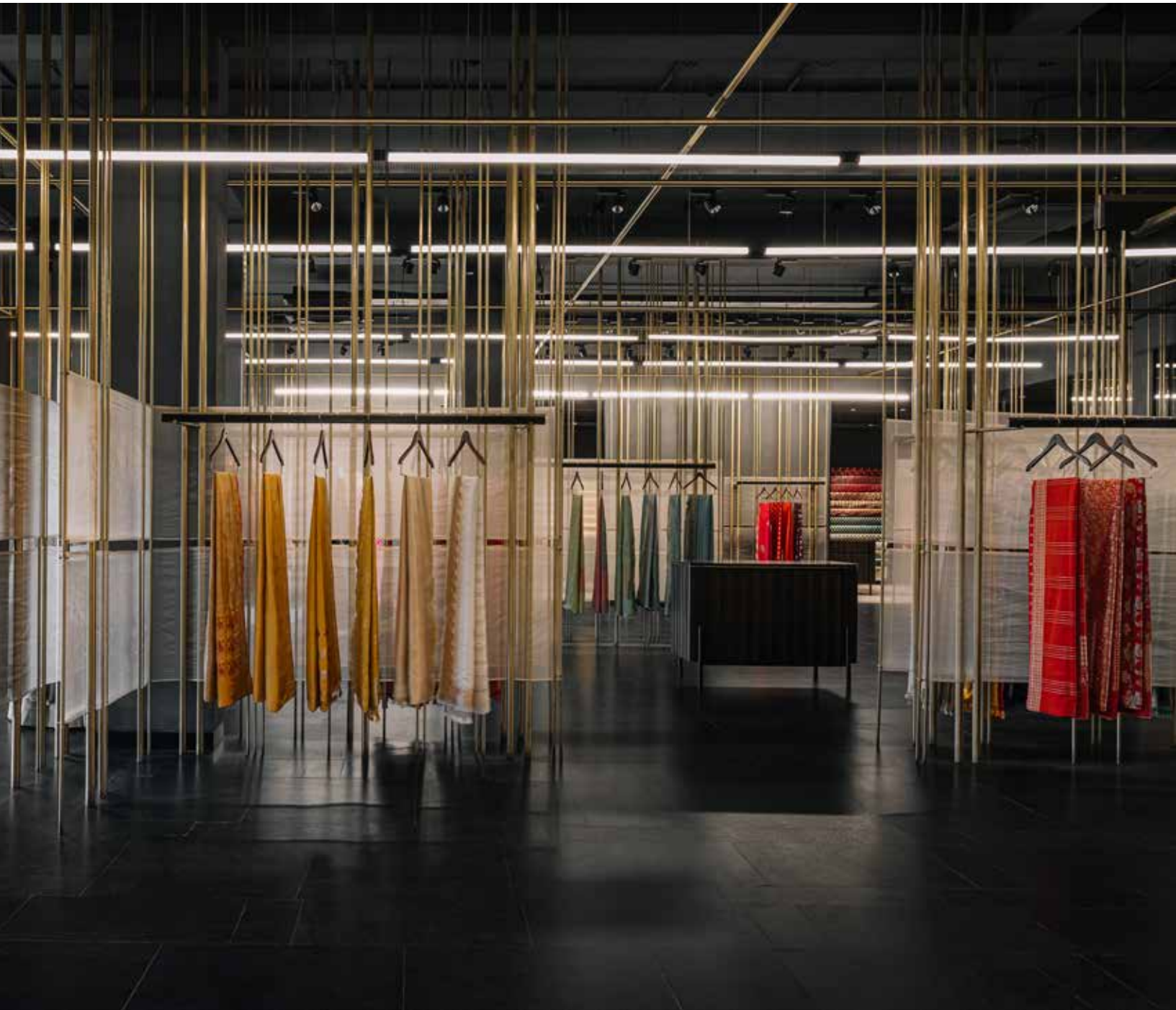




Ekaya Banaras, Ahmedabad

The studio has recently completed the new retail experience store for Ekaya Banaras, India's first handloom luxury brand—in the city of Ahmedabad. Bringing together a 120-year-old legacy of traditional craftsmanship with contemporary design sensibilities, the brand looked to define a space that exemplifies its vision of promoting luxury handloom textiles to a new generation of buyers.

Weaving being central to Ekaya's brand identity, the store's design is built around a modular installation of brass pipes that creates the impression of an immersive three-dimensional weave. Functionally a display device that integrates in-built lighting, the assembly creates an ever-changing tapestry that lends the space a visual dynamism and allows for the experience zones beyond it to be layered and subtly revealed.







RAAS Chhatrasagar. Nimaj, Rajasthan

RAAS Chhatrasagar is a 16-key hospitality property perched atop a century-old dam on the banks of the Chhatrasagar Lake, in Nimaj, Rajasthan, reinventing the erstwhile temporary tourist camps set up across the embankment. Designed using a system of low-impact foundations and lightweight superstructures that minimise its environmental impact, the new property provides guests with a year-round opportunity to experience the wildlife, the lake, and the region's unique sunrises and sunsets amidst eight hundred acres of pristine forests. Woodcut and locally inspired stone crafts are expressed as contemporary interventions in the new property.

For Studio Lotus, design is not just a profession, but a passion-driven journey. With a rich tapestry of projects spanning various sectors, Studio Lotus has established itself as a beacon of innovation and excellence in the world of interior design. Each project is a testament to their commitment to creating spaces that resonate with authenticity, functionality, and aesthetic finesse



Tranquil Mediterranean-Inspired Bungalow in Goa

Sachin and Neha Gupta, Founders of Beyond Designs have designed a stunning bungalow in Goa, that is characterized by clean, tranquil spaces reminiscent of Mediterranean style, it features whites, blues, and subtle classic details that have resulted in a serene ambiance.

Meet Sachin and Neha Gupta, the visionary minds behind Beyond Designs. With their innovative approach to design, this dynamic couple has established themselves as leaders in the interior design industry. Over the years, they have cultivated a distinctive style, earning them a prominent place in the segment.

Sachin and Neha have meticulously designed an 8,000 sq. ft bungalow nestled in Goa, tailored to the discerning tastes of their clients, Richa and Anuj Malhan from Delhi. This architectural marvel promises a visual feast, blending elegance with functionality to create an unforgettable living experience.

Explaining the design concept Neha Gupta adds, "We are proud maximalists and rarely think in terms of spare and minimal. But for this beach house in Goa, we chose to let the expansive feeling of the sea take over, without veering excessively from our signature style."

As the designers had worked previously with the homeowners Richa and Anuj Malhan from New Delhi they were familiar with the client's lifestyle and decor preference. Taking inspiration from the serene Coco beach, which the bungalow faces, the designers deviated from their design style and preferred to seamlessly connect with the panoramic views of the outdoor area. This resulted in clean and tranquil spaces, reminiscent of the Mediterranean style with whites and blues, dotted with subtle classic details, textural interests, and artworks.





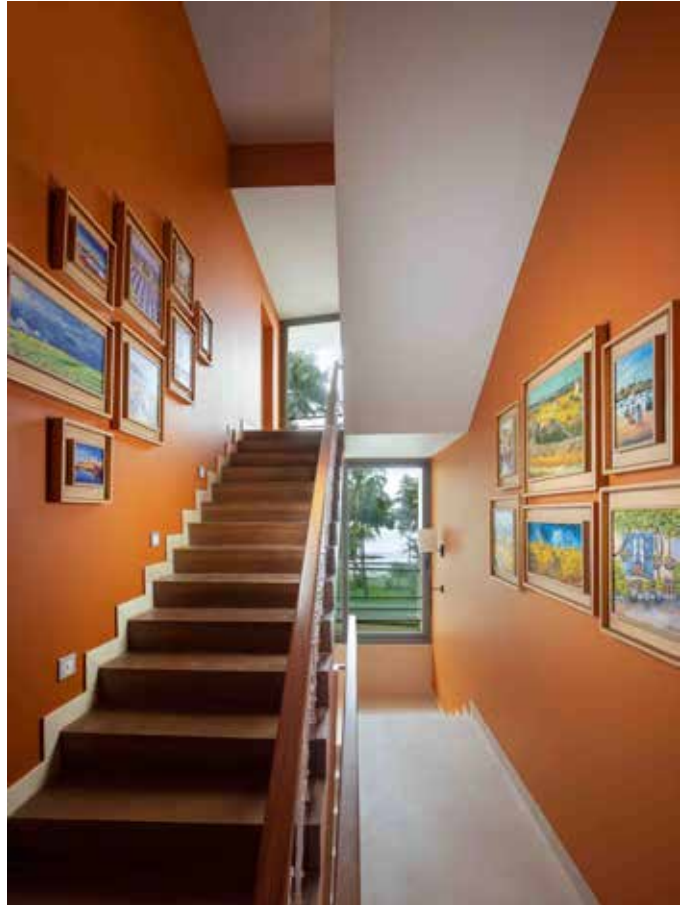




This four-storeyed villa was initially planned like a typical city home, which was changed entirely to give it a more Goan Portuguese flavour. It took the design team nine months to finish this project; it proved to be one of the most challenging projects because of the constant rain and heavy moisture in the air.

Explaining the design and layout of the bungalow Sachin adds, "Interestingly, the bungalow stands on stilts, so we used half of the stilt area to carve out a dining room, bar lounge, and courtyard. Surrounded by greenery and furnished with classic contemporary furniture, the bar lounge is a relaxed space with a leather bar cabinet from Trunks Company. Most of the other furniture, accessories and lights seen across the home are custom-made by us at Beyond Designs, while the carpets are sourced from The Carpet Cellar. The overall decor is an amalgamation of exquisitely crafted furniture, unique prints on fabrics and European refinement. Even though white is the base, the property boasts abundant textural flair and an authentic, intimate vibe, owing to the use of quality natural materials such as marble, wood, and local stones."

The interiors are designed to take advantage of the blue expanse of the sea. On the lowest level, there are two sea-facing, white and blue bedrooms with balconies. Even the ensuite facilities open out to a balcony of their own, which has been fitted with a charming outdoor bathtub and shrouded in privacy with the help of a canopy of tree branches and a green patch around them.



A voluminous, double-heighted formal living room is conceptualised on the floor above. Boldness and elegance converge here as a large, carved wood panel forms a gorgeous feature wall. Meanwhile, furnishings in a light shade and a mosaic stone coffee table in blue and white add a nautical freshness. On the other end of this space is an all-timber mezzanine that serves as a play area for the kids, who make the most of the spiral staircase too.

Neha adds, "Nearby is the homeowners' suite, painted in a sober blue shade and furnished with a four-poster bed. Ornate wooden framed mirrors are paired with modern nightstands in white in typical Beyond Designs style. A key highlight in the ensuite bathroom is the striped patterned flooring we created using local pink and white stones."

A bedroom with a cosy lounge area and a bathroom with an attached balcony reveal itself one level up. Meanwhile, the uppermost floor accommodates a wooden deck to soak in sea views and an infinity pool that seems to merge with the blue waters.

Connecting all four storeys is a zesty mustard-orange staircase. Another aspect that's seen throughout is the plethora of family photographs and artworks that adorn the many sections of the home, some customised by us, others picked by the owners during their travels abroad.

Overall, the home designed by the talented designers is a perfect home retreat for the homeowners.

Photographer: Atul Pratap Chauhan



KALPDRUM: A Luxurious Haven

Ar. Geeta Arya designs a luxury bungalow KALPDRUM that is a perfect fusion of timeless elegance and modern opulence.

Geeta Arya, a luminary in the realms of Architecture and Interior Design, was entrusted with a singular vision for KALPDRUM: to eschew ostentation in favor of subtle refinement. Embracing the client's desire for a home exuding class and sophistication, Geeta's team embarked on a journey to create an abode that epitomized unpretentious indulgence.

Every facet of KALPDRUM exudes opulence and modern elegance, serving as a testament to the discerning taste of its occupants. Divided into three distinct zones meticulously tailored to meet specific client needs, the residence seamlessly integrates luxury with functionality.





Upon arrival, guests are greeted by a Zen-inspired custom water feature at the entrance, setting a serene ambiance. The ground floor unfolds into a formal living space and a guest bedroom, boasting a harmonious blend of classical and contemporary design elements. A striking staircase, marrying classical elegance with modern aesthetics, leads to the first floor, where a spacious double-height family lounge and dining area await. The parents' bedroom on this floor is a sanctuary of modern luxury, adorned with classical furnishings and minimalistic wall designs. Meanwhile, the daughter's bedroom, reflecting her artistic inclinations, features a splendid Art Modern interior design, bathed in natural light.

Adjacent to the family lounge lies a seamlessly integrated mandir, boasting a clean and minimalist design that complements the overall aesthetic of the house. The upper level houses intimate spaces, including the son's master bedroom, daughter's room, and a lounge area. An entertainment lounge with a bay window offers abundant natural light and a visual connection to the external party terrace, infused with a Moroccan theme.









The flooring throughout the residence is a testament to timeless appeal and natural beauty, ranging from white stone with intricate inlays to cement tiles adorned with Moroccan-inspired designs. Indian stone artwork, including the illustrious Gwalior mint, adorns various nooks and corners, celebrating the rich heritage of the region.

Lighting fixtures, including exquisite chandeliers and strategically placed spotlights, serve as focal points, enhancing the overall ambiance and highlighting architectural features. A monochromatic color scheme, accentuated by carefully curated art pieces, creates a harmonious visual effect, while furniture pieces seamlessly blend elements of modernity and classical elegance.

In line with contemporary sustainability practices, KALPDRUM incorporates renewable energy systems and utilizes sustainable materials, underscoring its commitment to environmental responsibility.

Beyond its luxurious amenities, KALPDRUM seeks to establish a symbiotic relationship with its vicinity, fostering an environment that inspires creativity and productivity. Privacy, functionality, and aesthetic harmony are seamlessly integrated into the design, creating a space that not only reflects the lavish lifestyle of its occupants but also enriches the local community with its architectural magnificence.



White Glamour

Designed by Shibani Mehta of Naksh Design Studio, this all-white masterpiece combines modern sophistication with minimalist elegance in an effortless manner.

A multipurpose space that is light on the eye, simple, functional and uncluttered -- this is Urbano Zen, an apartment designed by Naksh Design Studio in Mumbai's coveted address at Usha Kiran situated in Carmichael Road. With the client's desire to have all spaces connected to each other yet keeping it all streamlined, Shibani Mehta of Naksh Design Studio decided to keep things simple. So she kept everything predominantly white with splashes of colour that could be added or subtracted (depending upon the mood) allowing it to blend and contrast with the rest of the space. Spanning an ample area and offering stunning vistas, this apartment is a living proof for the delicate balance of functionality and visual refinement. Explaining the client's brief, Shibani says, "The client wanted a multipurpose space- which could easily open out and connect to the living space. They desired an abode that was light, simple, uncluttered and functional."



The main design aim was to give maximum flexibility to the space and this was achieved through a few simple things like the use of sliding doors, adding a murphy bed and a flappable study table. Tucking the wardrobes inside a corner pocket helped to keep the entire area clutter free. This also enabled the space to work as a bedroom at night and as a den or family space during the day. One smart design element by Shibani was to use the existing niches in the walls to create concealed storage and flushing the thickness with murphy mechanism for a seamless look. Offering more insights on the design scheme, Shibani adds, "We worked around using sliding doors - to open and close the space. Working with a murphy bed and a flappable study - gave a lot of flexibility to the space. Niches in the walls have been used to create concealed storage, flushing the thickness with the murphy mechanism - to give storage and a seamless look." The outcome is a thoughtfully created area which blissfully combines modern charm with functional design elements.

The challenge, however, was that the walls were very crooked, and the ceiling and structure were weak, the flooring was old and needed lots of rectifications. Shibani adds, "We had the structure panelled with different thicknesses to get the straight look. Since the colour palette was white, the entire room furniture was white P4 coated for a classy look. We have added a soft colour breaks in furnishings, chair fabric and accessories so that the overall ambience is not a sterile "white only concept'."

A very important aspect of monolithic detailing in this home is the subtle yet very aesthetically superior. The client's vision of a seamless open space which could take on any role desired has been very adeptly been translated into this home with the use of simple mechanisms and the colour white. As you navigate through the residence, you'll find a home where the thoughtful use of white hues transforms every space into a sanctuary of elegance and serenity.



A Contemporary Oasis

Babu Cherian's approach to this project exemplifies a harmonious blend of innovative adaptability and creative brilliance, underscoring his profound appreciation and understanding of the natural world.

Nestled amidst the serene landscapes of a village in Kerala, stands an architectural marvel that harmoniously blends modern design with the natural beauty of its surroundings. Designed by talented architect Babu Cherian who is known for versatile and adaptive design solutions coupled with identical creative excellence, make his work prominent. A unique combination of resources, skills, and vision, he often draws inspiration from the spectacular land scenario of Kerala, and the architect in him steps into the spirit and character of the Kerala style of architecture. His works feature a heavy use of craftsmanship, his designs and products are more the work of the craftsman than of the architect.





His recent works are reinterpretations of the traditional Kerala style with their sloping roofs clad with Mangalore patterned tiles and plastered walls that emanate a feeling of timelessness.

"This contemporary house named Grace located in Kaladi, Edappal, Malappuram, Kerala, spread over an area 5057.41 sq ft. is a testament to the innovation and vision of our architecture combining a pool at its heart, lush greenery, a mesmerizing glass facade, and a dynamic steel trellis, all complemented by contemporary furniture." Says Babu Cherian.

The designing planning is centred around the pool. The focal point of the house is undoubtedly the pool that lies at its center, surrounded by the living spaces. This ingenious design choice not only enhances the visual appeal but also fosters a deep sense of tranquility and connection with nature. As the sunlight dances on the water's surface, it casts mesmerizing patterns inside the house, creating a harmonious blend of indoors and outdoors.





Inspired by the verdant landscapes of Kerala, the architectural plan seamlessly integrates lush greenery around the house. A meticulously landscaped garden with indigenous plants and trees not only enhances the aesthetics but also fosters an eco-friendly environment that promotes biodiversity and sustainable living. "The masterstroke of the design lies in the extensive use of glass in the facade. Large floor-to-ceiling windows and glass walls blur the boundaries between the interior and exterior, allowing natural light to flood the spaces and offering breathtaking views of the surrounding greenery. This not only creates an open and airy atmosphere but also encourages a seamless connection with nature." Says the architect.

Adding a touch of modernity and functionality, a dynamic steel trellis graces the exterior of the house. This ingenious architectural element not only acts as a sunshade, protecting the interior from the harsh tropical sun but also transforms the facade dynamically. It allows the occupants to adjust the amount of sunlight entering the house based on their preferences, creating a play of light and shadows that enhances the aesthetic appeal.

Inside the house, contemporary furniture pieces serve as functional art, complementing the overall design theme. The furnishings boast clean lines, minimalist aesthetics, and a neutral colour palette, allowing them to blend effortlessly with the architectural concept. The interiors exude an inviting ambiance, combining comfort and style in perfect harmony.





The living space has been divided into two, one adjacent to the entry and one at the central part of the house. The entry living is treated as the area for guests and also to watch television. This space is also adjacent to the passage that connects different areas of the house and also swimming pool which is partitioned using full-height glass.

The other living area is more for family as it connected to the dining, indoor courtyard, study and also the swimming pool as the entry to the swimming pool is via this living space. This living space acts as a central area to the house.

The dining area is one of the central parts of the house. The area was not partitioned and had direct connection to spaces like the inner courtyard, living and the kitchen. The dining also needed a connection to the outside landscape hence the placement of a full-height window was provided.

This contemporary house in Kerala village is a celebration of modern architecture, seamlessly coexisting with the natural beauty of its surroundings. With a pool at its center, abundant greenery, a mesmerizing glass facade, and a dynamic steel trellis, the architectural masterpiece stands as a testament to the fusion of innovation and tradition. Its through integration of contemporary furniture elevates the living experience, offering a tranquil oasis in the lap of nature.

Every bedroom had its own identity to it as the variety was the direct result of use of colors, how the space was treated and different elements placed within. The separated this bedroom from the. The placement of bedroom was closer to the entry but was placed in a way it was private from the rest of others the house.



Reviving Heritage: The Transformation of Raja's Cottage

Renovated by Ar. Apeksha Naik, Raja's Cottage is a harmonious blend of tradition and modernity. With meticulous care, she revitalizes this 90+ year-old Mangalore-style villa, honoring its heritage while infusing it with contemporary design elements.



In a world where modernity often eclipses tradition, Raja's Cottage stands as a testament to the timeless allure of heritage. Raja's Cottage is a unique and nostalgic project envisioned by Ar. Apeksha Naik, is situated in the heart of Mangalore, the ancestral town of the client. The project aims to rejuvenate a 90-year-old Mangalore-styled villa, preserving its historical charm while addressing the challenges posed by aging infrastructure and evolving lifestyle needs.

Raja's Cottage is nestled on a 12-cent plot, with the main door facing the North East, embracing the traditional principles of Vastu. The 4,000-square-foot built-up area has landscaped surroundings, enhancing the overall aesthetic appeal. A significant feature of the property is a majestic mango tree situated amid the plot, with branches extending gracefully over both sets of car porches, adding natural beauty to the surroundings.

The brief from the clients was clear: rejuvenate the ancestral home, addressing issues such as aging mud walls, fading red oxide floors, and the lack of modern amenities like attached baths and wardrobe spaces. With a deep-rooted attachment to the property, the owners embarked on the renovation journey in late 2018, laying the foundation for a transformative endeavor that would redefine the concept of home.

Before the renovation commenced, Raja's Cottage bore the marks of time – its mud walls echoing with history, its floors worn by the footsteps of generations. Yet, amidst the aging façade lay untapped potential, waiting to be unearthed. Structural changes became imperative, with steel sections reinforcing walls and spaces being reconfigured to accommodate the evolving needs of its inhabitants.











The architectural vision aimed not just at renovation, but at revitalization. Every element, from Chettinad stone to Athangudi tiles, was carefully selected to weave a narrative that seamlessly bridged the past and the present. As the project unfolded, sourcing materials proved to be a challenge, with the quest for authenticity leading the team across the country in search of traditional artisans and craftsmen.

Explaining in detail the restoration process Ar. Apeksha Naik says, "We used steel sections to strengthen the walls, and by merging the store and clothes drying area, we created a master bedroom. A doorway to the next room was introduced to make a wardrobe space for the master bedroom. Above the dining room, we constructed a slab to create a wardrobe and bath spaces in the bedrooms for children. This design aimed to make the house more comfortable and modern. Above the dining room, we have constructed a slab to accommodate wardrobe and bath spaces in both my brother's and my bedroom on the first-floor level which earlier didn't have these spaces. The wall segregating the dining and kitchen is broken down to accommodate an open kitchen and a niche for a hand wash area. We have used wooden columns over a pedestal to act as an entryway and bring in the openness between these 2 spaces. We merged the store and clothes drying area by introducing a slab of the same height, converted it into the master bed and provided an opening into an adjacent bedroom earlier in place that was without wardrobe space to make it an exclusive wardrobe space for the master bed. The first floor earlier had 3 bedrooms, the walls of which were broken to accommodate two bedrooms of a larger area for my brother and me. General changes – Right from designated car porch space, window structure and design on the façade of the building, introducing seating at the entry of the house, flooring, lighting, furniture, closed to open kitchen with an island in between, introducing spaces in both rooms on the top floor level, we have changed it all!"





Further explaining the finer details and hard work gone in the restoration of the home Apeksha explains, "The result is a symphony of design, where traditional elements harmonize with modern comforts. Customized windows adorned with carved wooden arches and antique lighting fixtures breathe new life into old spaces. The integration of Athangudi tiles and Chettinad furniture imbues each room with character, while the use of natural hues and earthy tones pays homage to the villa's heritage. Wood emerges as a central motif, not only in its aesthetic appeal but also in its structural significance. From solid wood ceilings to reclaimed temple doors repurposed as mirrors, the essence of wood permeates every corner, grounding the home in a sense of authenticity."

But perhaps the true beauty of Raja's Cottage lies in its ability to tell a story – a story of resilience, adaptation, and continuity. It is a living testament to the spirit of preservation, where the past is not discarded but reimagined for the future. As the sun sets over the tiled roof and the walls whisper tales of bygone eras, Raja's Cottage stands as a beacon of heritage, beckoning all who enter to experience the magic of time reborn.

Projects like Raja's Cottage embody the essence of innovation and creativity. It is a canvas where tradition meets innovation, where history finds a voice in the language of design. As the curtains draw on this transformative journey, Raja's Cottage stands as a testament to the power of preservation, reminding us that in the embrace of tradition lies the promise of a timeless legacy.



Inspirational Design

Virescent Infrastructure office in Mumbai, designed by ARA Designs, effortlessly knits versatility and simplicity with its refined design language

Nestled in the heart of Mumbai, Virescent Infrastructure's office in BKC designed by Ar. Amey Dahanukar, Founder, ARA Designs, stands as a tangible manifestation of the philosophy rooted in sustainability and enduring relationships.

The design team at ARA Designs took up this 5000 sq ft office with one simple brief from the client who desired a futuristic office space of the new-age. Explaining the client's requirements, Amey says, "Virescent Infrastructure's workstation has been designed keeping in mind the best of both worlds- a workspace that combines the traditional, functional office along with spaces for social interaction, collaboration and relationship building.



In response to the client's desire for an unconventional office space with an outdoorsy and raw ambiance, the design team embarked on creating a distinctive setting reminiscent of Soho House, infused with elements reflecting the client's infrastructure-based company and its focus on green infrastructure initiatives, particularly in the realm of large solar fields spanning the country.

The office design and theme is centered around establishing an informal and open office layout, emphasizing co-working and collaborative spaces that seamlessly connect individual cabins with the surrounding environment. Sharing insights on the design process, Amey adds, "Rather than allocating significant space to staff workstations, the emphasis was placed on creating ample meeting spaces to accommodate frequent visits from lawyers and other visitors. Starting from the reception area, a touch of tropical vibes was introduced through the use of cane accents, complemented by exposed brick surfaces that adds a rustic charm and warmth to the overall aesthetic."

Upon entering the reception area, one is greeted by exposed concrete walls showcasing the company's logo. A small arched structure with a cane reception table serves as a focal point, creatively integrating the landscape into the design. Hanging bookshelves adorn both sides, offering space for displaying artifacts and showcasing the company's accomplishments. The design team has paid careful attention to detail, incorporating a Georgian bar setup that infuses a hint of French influence through glass doors and other interior elements. The central space features a sizable office area interconnected with cabins, including a spacious conference room and culminating in the Managing Director's cabin that offers panoramic views of Jio Garden. The cabin areas have been designed to provide a neutral backdrop that embraces the surrounding open space, with workstations interspersed by collaborative areas. Meeting spaces have been strategically positioned alongside workstations, with peripheral areas delineated by a small server room. "The corners of the workstations have been thoughtfully rounded off, contributing to the overall cohesive aesthetic. Adjacent to and connected with the MD's cabin, a collaborative lounge area offers a more secluded space for collaborative endeavors, ensuring both privacy and accommodating external individuals seeking a place to work", informs Amey.

The office boasts a bold material palette, featuring exposed bricks, cane accents, and concrete on the floors and walls. The colour scheme incorporates shades of green, olive, and red emerging from the bricks, accompanied by neutral elements such as cane finishes throughout various areas of the office.

The project's unique selling point lies in the carefully crafted collaborative spaces, each possessing an individual look and feel while maintaining an overall sense of privacy throughout the office. The office environment was designed to inspire and invigorate, creating a sense of freshness and timelessness that entices individuals to return.



Redefining Legal Spaces

Rohit Kapoor's meticulous design for a lawyer's office seamlessly blends sleek furniture with minimalistic decor, resulting in a warm and inviting atmosphere.



Rohit Kapoor, Founder, Nivasa has meticulously designed an office for a Lawyer which blends professionalism and comfort. Sleek and elegant furniture adorns the space, creating a welcoming atmosphere for clients. Subtle hues and minimalistic decor exude a sense of sophistication, while the strategic placement of legal books and documents reflects expertise and credibility.

Located in Defence Colony in New Delhi, this 2,500 sq ft office designed by Nivasa gave the space a distinctive identity, the interiors showcasing a modern design style interspersed with classical highlights. An inviting lobby opens to a light-filled waiting room, a chic main office and a character-filled conference room. A muted palette of colours and textures, thoughtfully crafted details and unique materials give the interiors of this workplace a charming look and feel.



The lobby of this workplace is an arresting burst of light blue and yellow with a plethora of planters, decor accessories and artworks.

Snug yellow leather armchairs, black and white chequered flooring and a faux fireplace in the lobby help craft a tranquil space. The interior of this space is further enhanced by the delicate woven cane panels, which act as a room divider and decor piece as well. The waiting room of this workplace has been conceptualised to be an evocative of an opulent living room. It boasts a comfortable blue and grey sofa set, a wooden shelf, a rectangular metal and wooden coffee table and an expansive window and balcony. The plush sofa and the thoughtfully curated decor accessories elevate the white walls of this room.

In the main cabin, visitors are greeted by the regal lawyer's desk on the left and a leather sofa set on the right. Highlights of this space include the floor-to-ceiling wooden bookshelves with cane features and a brown Chesterfield. These bookshelves are highly practical and also bring an antiquated charm to the room. The magnificent chairs with cane detailing, the coffee table with a marble inlay top and the colourful carpet come together beautifully.









The interior style of the primary office extends to the conference room as well. This room houses grey walls, a wooden bookshelf with a cane cabinet, a sleek wooden conference table and chairs with cane detailing. In one corner of the room is a dark blue lounge and a console with decor pieces that bring in a serene vibe. This corner is the perfect space for the lawyer to take a break in. This office space is not a typical lawyer's workplace, it reflects the client's personality while still being highly functional and warm. With this one-of-a-kind space, Nivasa hopes to reimagine the way we design and interact with our offices.

Photographer: Deepak Aggarwal



Your Personal “Luxurious Home Lift”



Jet Elevator
Italian Home Lifts

Bungalows | Row House | Duplex Flat | Pent House | Showrooms | Resorts & Hotels

Attractive Looks, Requires Small Place, Single Phase 230V,
Auto & Manual Door, Pit 80mm, Head Room : 2300mm,
No Machine Room, Noiseless & Easy to install.

Head Office: 207- Gold Crest Business Park, L. B. S. Marg, Ghatkopar W., Mumbai 400 086, India.

Tel.: 022 -25003444 / 441 **Mob. No.:** +91 82862 65555 **email:** sales@jetelevator.com

www.jetelevator.com



A Modern, Collaborative and Sustainable Workspace

The Adani Miracle Mile, an innovative office meticulously crafted by Morphogenesis, not only sets unprecedented benchmarks in sustainability and employee well-being but also embodies the evolution of modern workspaces.

Adani Realty, the real estate arm of the Adani Group, has unveiled Adani Miracle Mile their new office in Gurugram. Designed by Morphogenesis, the team has incorporated innovative design elements that set benchmarks in sustainability and prioritize employee well-being, redefining contemporary workspaces. This office directly reflects the company's vision for a modern, transparent, and collaborative workspace crafted to align with international standards and promote creativity.





Explaining the Design Concept, Ar. Sonali Rastogi, Founding Partner, Morphogenesis says, " Our primary objective for Adani Miracle Mile was to ensure the design reflects the organisation's vision for a new-age, transparent, and collaborative workspace. The intent was to enable employees to engage and innovate with a focus on well-being. Our design approach involved responding to both functional and qualitative aspects of collaborative workspaces. The design embraces a minimalist, globally appealing aesthetic while reinforcing Adani Realty's distinct brand identity."

The design caters to both functional and qualitative aspects of collaborative workspaces, embracing a minimalist, globally appealing aesthetic in line with international standards while reinforcing Adani Realty's distinct brand identity. Spread over 16,000 sq. ft. on the third floor of a commercial building, the office accommodates around 150 employees, including top-tier executives, and features a large terrace.



In keeping with the 'Liveable' criteria derived from S.O.U.L., a copyrighted design philosophy of the architects, the 16,000 sq ft office is a harmonious balance of wellness and contemporary design for a commercial space. The interiors have been designed to allow natural light, creating a voluminous and optimistic environment for its users. Upon entering, guests and employees encounter a compelling representation of the brand in the lift lobby. Executed in muted pastel tones, the interplay of light fabric against a subtly textured white backdrop establishes the foundation for the prevailing minimalistic design ethos. Moving further, the journey unfolds into a spacious reception and waiting area.

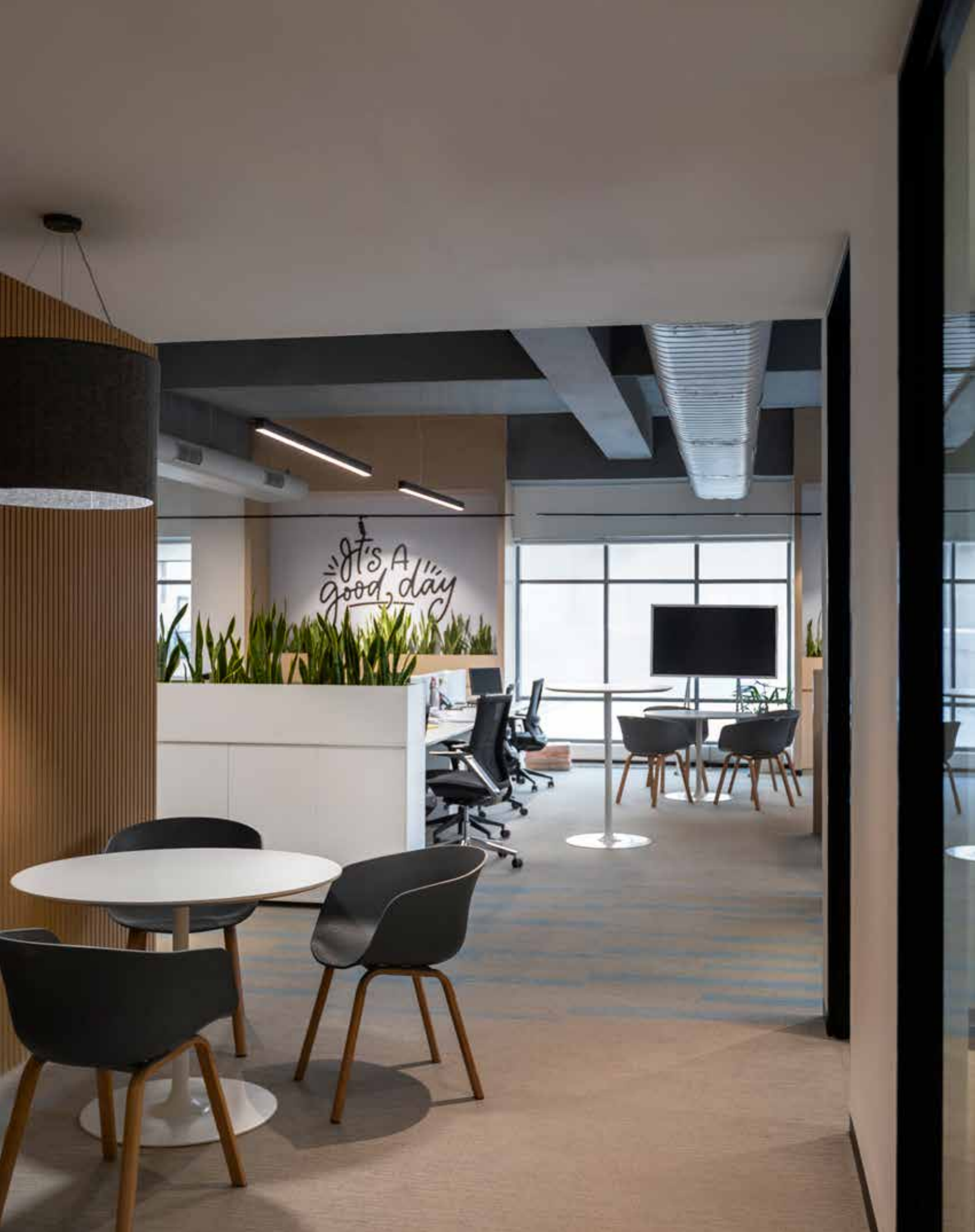
As mentioned earlier by the architect, a pivotal focus in the design process was ensuring employee wellness. To support this, spaces have been planned to inspire health and productivity, providing ample natural daylight and circulation. The transition space between reception and workstations was transformed into a 'Zen space,' featuring indoor plants and a calming feature wall. Primary workstations align along the building's perimeter, while carefully positioned work desks prevent glare in the main workspace. An outdoor terrace serves as a versatile working space, breakout, and events area for employees.



Following the transition space, the offices for team leads are designed with a distinct character through a linear, low-height frame crafted from fluted oakwood. Eight work desks are arranged perpendicular to the glazing, positioned to minimize glare. Fostering collaboration and spontaneous knowledge sharing, the open-plan layout encourages chance encounters. Departing from traditional opaque, full-height partition walls, the architects incorporated low-height planters throughout the working floor. This not only preserves transparency and supports a non-hierarchical approach, but also naturally filters indoor air, creating a positive ambiance. The architects provided writable lacquered glass surfaces and desks, creating a versatile space for impromptu brainstorming sessions among employees.

The design seamlessly merges active and passive sustainability strategies. All working areas enjoy natural light, augmented by daylight sensors in the main workspace. Occupancy sensors optimize energy consumption in enclosed areas, resulting in nearly 50 percent less energy usage compared to conventional workspaces. The office further embraces energy-efficient LED lighting, motion sensors, and water-conserving plumbing fixtures.







The design process focused on maximizing daylight and reducing dependency on mechanical means of lighting and ventilation. Service areas, such as the pantry, kitchen, toilets, AHU, and IT rooms, are clustered around the central circulation core. Meeting rooms requiring controlled lighting conditions are planned adjacent to the core. The directors' and CEO's cabins are planned along the south-western edge, in compliance with Vaastu principles, while collaborative workstations and the cafeteria are planned along the south-eastern edge.

In adherence to the international WELL Building Standard, the architects crafted a responsive and resilient oasis. Natural air filters, including Areca Palm, Mother-In-Law's Tongues, and Raphis Palm, are generously scattered throughout the space. The HVAC system integrates a centralized air purifier, ensuring a consistently healthy Air Quality Index. Universal accessibility and the use of green-certified materials create a holistic, healthy work environment, including low VOC paints, CRI-certified carpets, and Greenguard-certified furniture.

The architects personalized the modern office space for the Adani Group by integrating brand colors into its interiors. In summary, Adani Realty's Gurugram office shines as a fitting example of innovation, sustainability, and employee-centric design, elevating the standards for corporate workspaces globally.

SMARTER PLUMBING & DRAINAGE SOLUTIONS FOR FUTURE READY SMART CITIES!

Since 1942
Supreme[®]
People who know plastics best
TOTAL PIPING SOLUTION



Download the App
Supreme Pipes
Available on Google play and App Store

Jeevan bhar ka saath...



Lifeline[®]
C-PVC Hot & Cold
Water System



**COMPLETE
WATER STORAGE
SOLUTION**



SKY RISE[®]
Hi-Tech, Low Noise,
S.W.R. Drainage system



Nu-Drain[®]
Underground Drainage
& Sewer System



SAFEGARD[®]
Septic Tanks



**AQUATIC
AQUAKRAFT**[®]
Bath Fittings

● Water Management ● Plumbing ● Drainage ● Sewerage

Explore supreme's exhaustive product range of more than 12,000 eco sensible green products & find a perfect match for your smart homes!

Salient Features: Widest range | Stronger and resilient | Excellent resistance to corrosion and chemical attacks | Perfect hydraulic properties | Simple and leak proof joints | Quick and convenient installation | Designed to last for more than 50 years | Maintenance free | Eco-friendly | Most cost effective.



Toll Free No. 1800-102-4707



91-22-4043 0000



www.supreme.co.in



pvc-pipes@supreme.co.in

A Creative Nexus

Ark and Arts have ingeniously crafted Anirudh Damani's office, setting a benchmark for corporate workspaces with its blend of innovation, functionality, and opulence.

A workspace fit for an urban design company: That's perhaps the first impression a visitor would form of Anirudh Damani's office space designed by Ankita Baid Founder & Director, Ark and Arts. This approximately 4,000 sq ft office is located in Kolkata's busy location of Minto Park crossing and overlooks the AJC Bose flyover. The firm's design for this office, which is a family-owned business, strikes a balance between corporate minimalism and a nonchalant industrial aesthetic that prioritises the authenticity of expression. The design strategy is interlaced with the idea of fluidity while retaining the vastness of the space.

Explaining more about the client's requirements, Ankita, says, "The client wanted systematic director cabins, trading area and general workspace where mainly their family members would work out of. They do not have many walk-in clients thus they wanted a private space which is not only homely to work with but also practical in terms of space management. They desired a studio office space. After Covid a lot of people have built comfortable office space near their existing homes. Their idea was to create a work environment which is good for working during the day and lounging in the evening." She further continues, "It is of utmost importance that the space aligns with the client's personality. We kept this in mind while designing their cabins. We used simple and natural materials to express the simplistic nature of the clients."

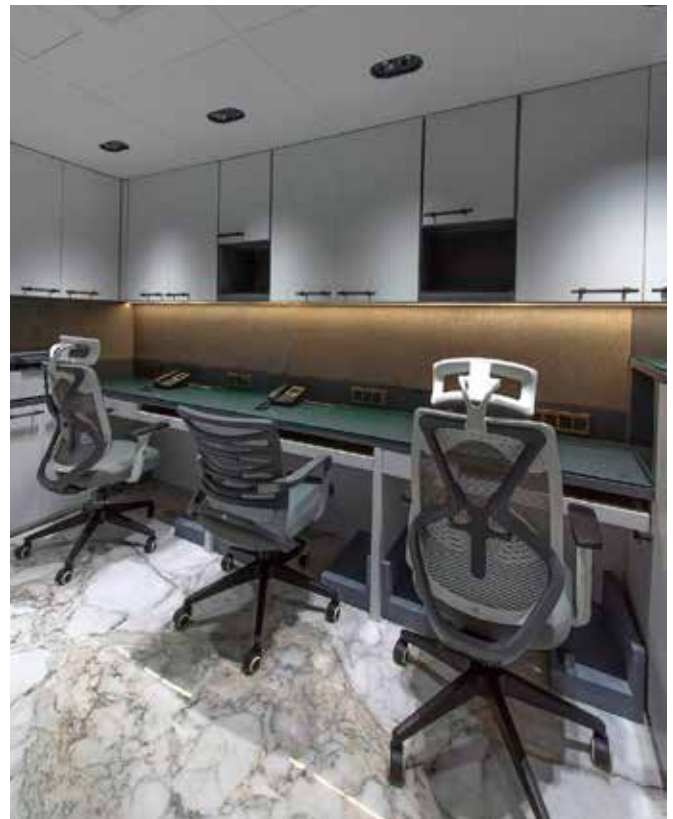
This studio office comprises a reception, filing room, general workspace, mandir, waiting area, four director cabins, a trading area, conference lounge, pantry and washrooms. Each space is practical to use and has abundant room to walk around. "We wanted to use natural wood textures and neutral colours throughout the space. The focus was to combine the use of wood and marble textures to create an environment which looks warm and comfortable. We wanted to work with simple forms with precise detailing", adds Ankita. The firm intended to create a stress-free office environment that radiates positivity and is practical to use. This was possible by designing clutter-free workstations, hidden storage and use of basic neutral colours like white, beige, brown and grey.

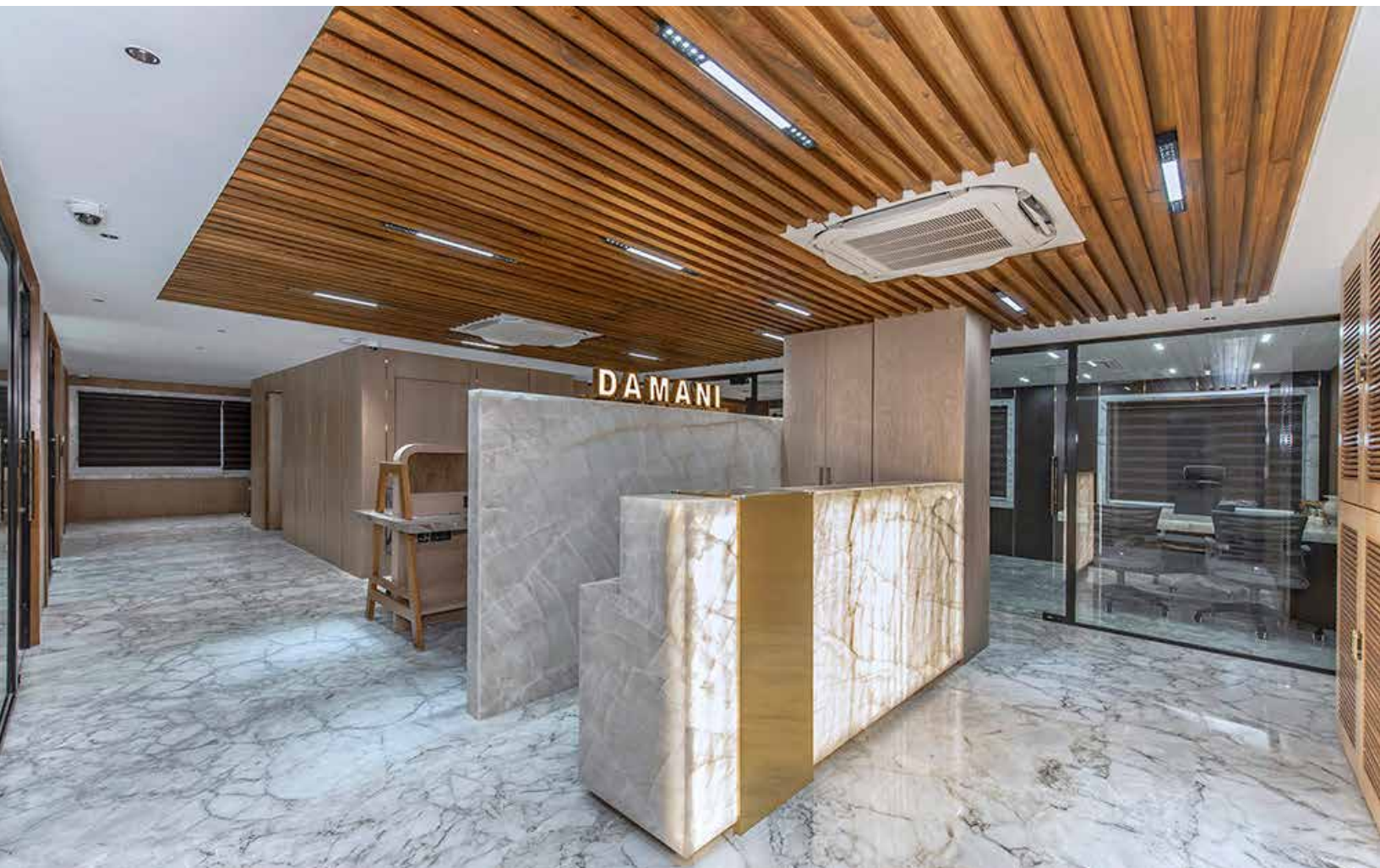




The open reception was meant to create a lasting impression. This space portrays a sense of luxury through the reception table that is clad with premium white onyx stone which is backlit and effectively displays the Damani signage. "There is a waiting area right next to the reception that also has a mandir close to it. The idea is to get a glimpse of the almighty while leaving or entering the workstation", informs Ankita. The general workspace is planned in a way that it can be visible to all directors from their cabins. The tables here have built-in storage to accommodate files and office stationery. There are 4 director cabins each unique in their style and wood textures. The strategic location of these cabins allows maximum flow of sunlight. The tables are spacious and effective to work comfortably.

The conference lounge is where they hold informal meetings and video conferencing. This is a multifunctional area which also doubles up as a library, lunch room, relaxation area and also as a screening room. Sharing more about the design scheme, Ankita says, "We have designed a luxury conference lounge that overlooks the busy AJCBoseRoad flyover. There are geometric wood forms on the ceiling with Brazilians quartz stone on the floor. It's a lounging space designed for informal meetings and video conferencing. The conference table clad in luxury white onyx is the epitome of extravagance and style. The huge LCD area allows for screenings of presentations."





Natural materials like wood and marble have been used abundantly. The variation was created with different wood grains and tones of wood. Neutral and natural colours like those of wood and stone have been used in harmony. The floor is clad with a white Italian marble with grey veins from the statuario family. Each room has a different wooden texture and veneer. All the surfaces are matte, easy to maintain, have no artificial colouring or staining and blend in well with each other. The seamless integration of wood and marble makes the entire office a visual splendour. As far as lighting is concerned, they have used warm white lighting to soothe out stress and provide a comfortable ambience. The team has tried to balance the natural flowing sunlight and artificial lights to create a serene environment during the day. Ankita says, "The planning focused around the inflow of sunlight to provide maximum natural light in the space. Space planning techniques were given foremost importance while designating spaces. The lounge for instance is located near the entrance so that the guests can be easily directed upon entering the space. The trading area, pantry and washrooms are located in the end."

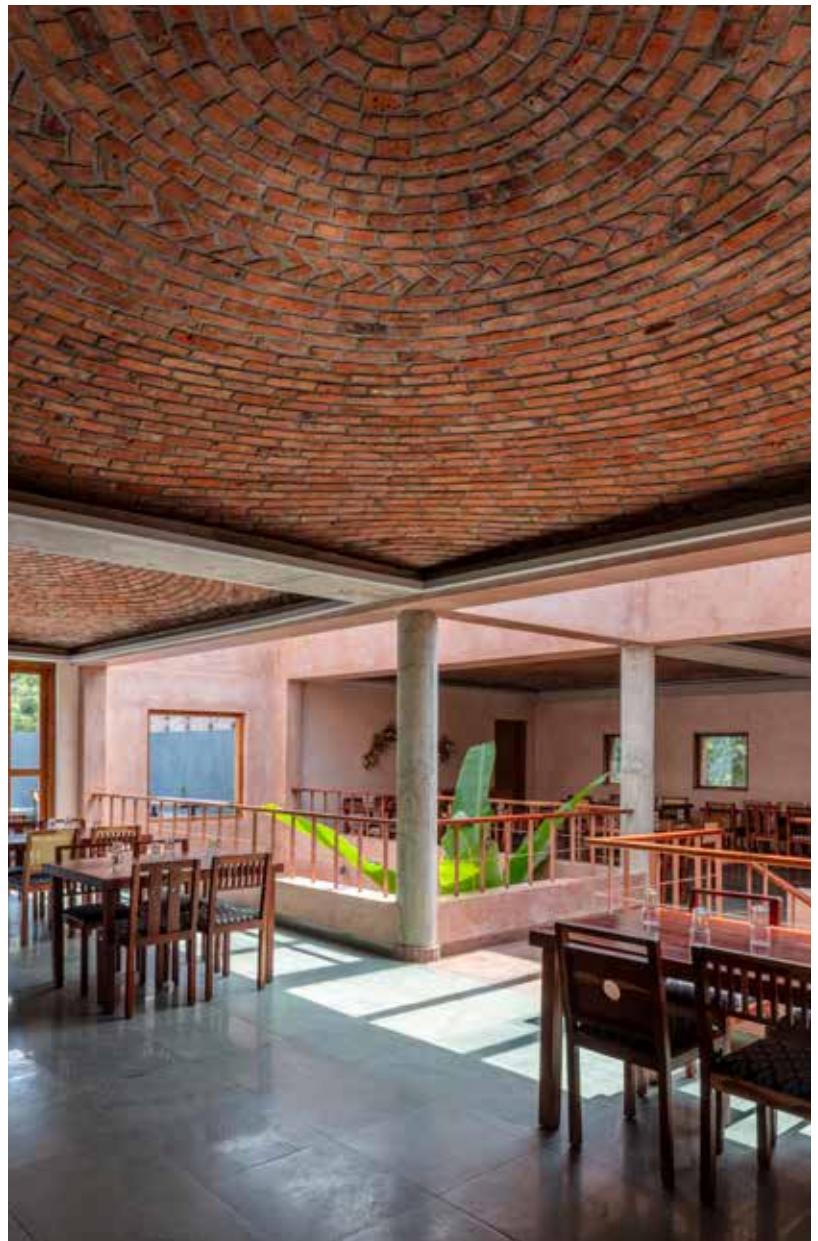
"It's challenging to create spaces which define relaxed work environments, where the focus is more on comfort and luxury than space utilisation. We were focused on creating a studio office which is very spacious, technically sound and which can be used for conducting family business meetings", concludes Ankita.



Telugu Medium: Where Heritage Meets Culinary Excellence in Hyderabad

Crafted by the esteemed Sona Reddy Studio, Telugu Medium a gastronomic haven promises an immersive experience where every element, from the architecture to the cuisine, reflects a rich tapestry of tradition and innovation.

Telugu Medium, a hospitality venture spanning 5,200 sq ft, stands as a testament to architectural ingenuity. Helmed by Sona Reddy Studio and designed alongside her talented team comprising Anjali Miriyala and Jemy Joy, the space embodies a unique fusion of heritage and culinary excellence. Nestled in the leafy urban enclave of Jubilee Hills, Hyderabad, this authentic Andhra restaurant redefines the gastronomic landscape by seamlessly blending the past and present.





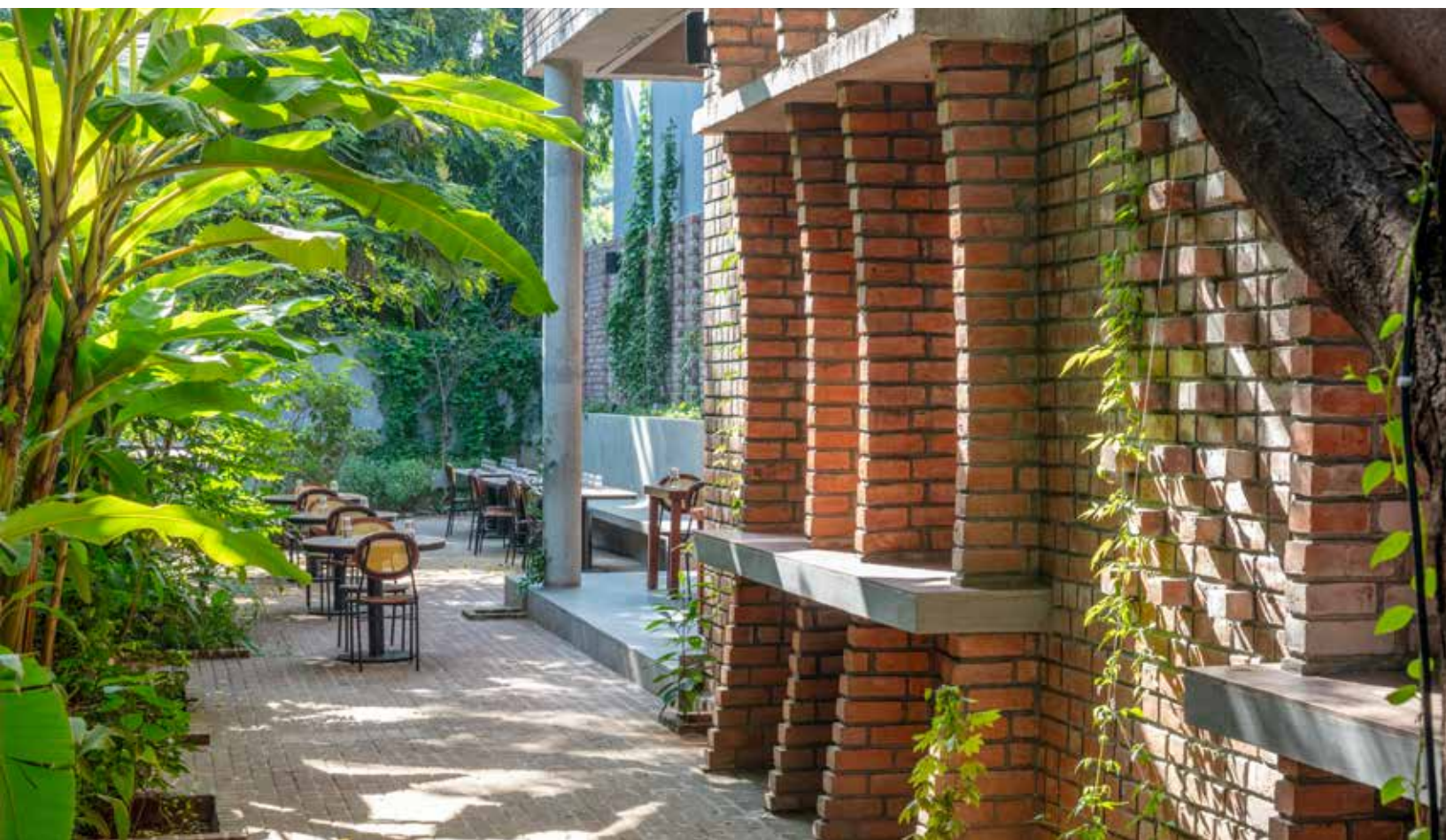
Co-founded by Malvika Rao, Anil Karnati, and Rohit Medisetty, Telugu Medium spins a narrative deeply rooted in indigenous materials and vernacular building techniques that celebrate the essence of the Deccan.

The architecture engages massive brick domes, vaults, and exposed, load-bearing walls, minimizing the use of concrete and steel, thereby creating a passively cooler interior environment tailored for Hyderabad's arid climate. The exterior facade, adorned with exposed Karimnagar bricks, whispers tales of intrigue while projecting bricks introduce a tactile layer of texture and concrete planter boxes marking the entrance. The alfresco waiting space, entirely paved in brick, seamlessly connects the building to its surroundings, while the northern edge hosts outdoor seating under sprawling canopies, creating an interplay with curved brick fins and inset portals framing views of the exterior.

Entering through a vestibule wrapped in brick, guests are welcomed into a dual-level restaurant featuring 13 ft high colossal walls and a double-height atrium suffused with natural light. This provides for a moment of pause to surrender and take in the immersive design vocabulary. The ceiling becomes a canvas of the crafted brick domes and vaults, interacting with silhouette lighting to create an ever-changing atmospheric ambiance.

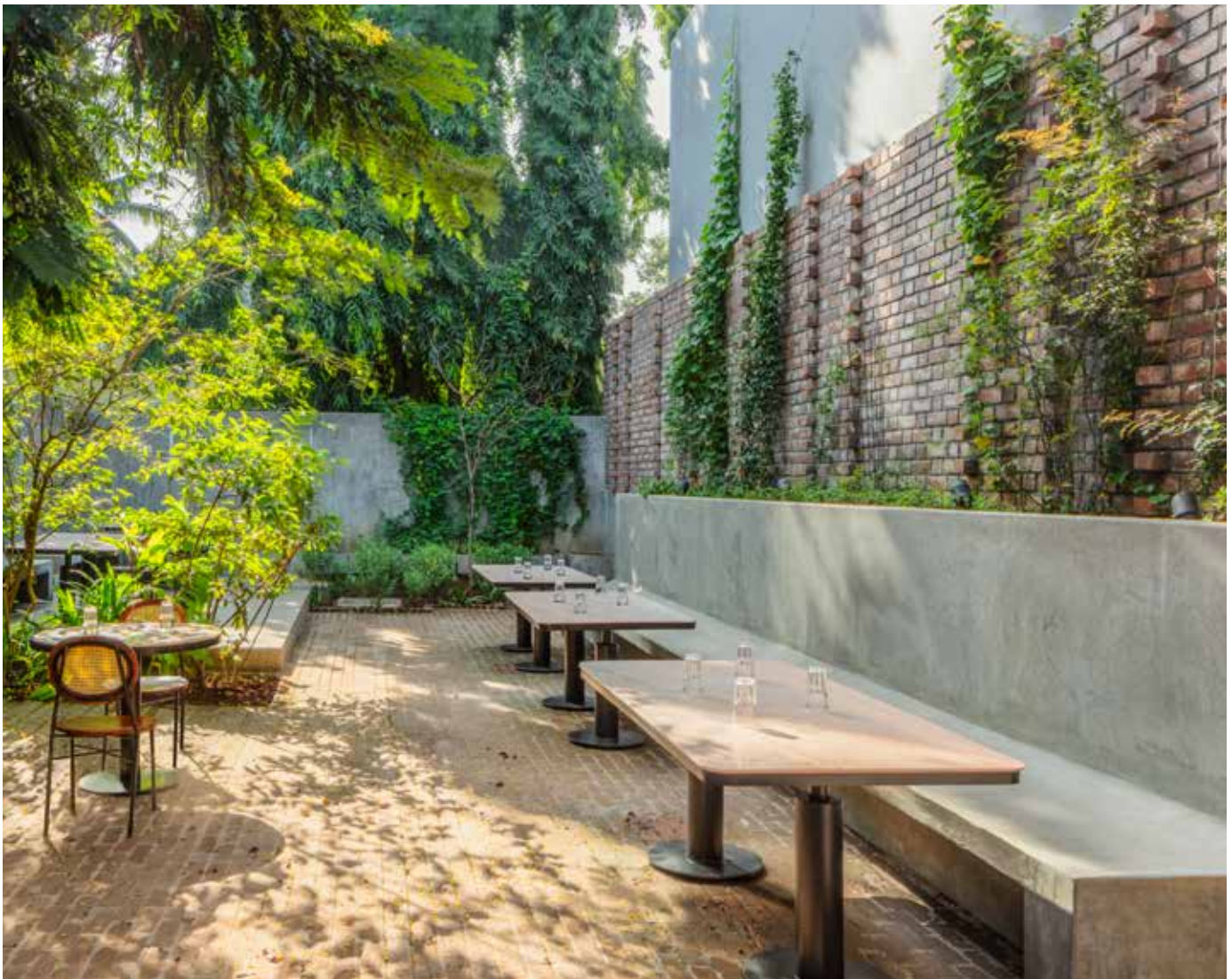


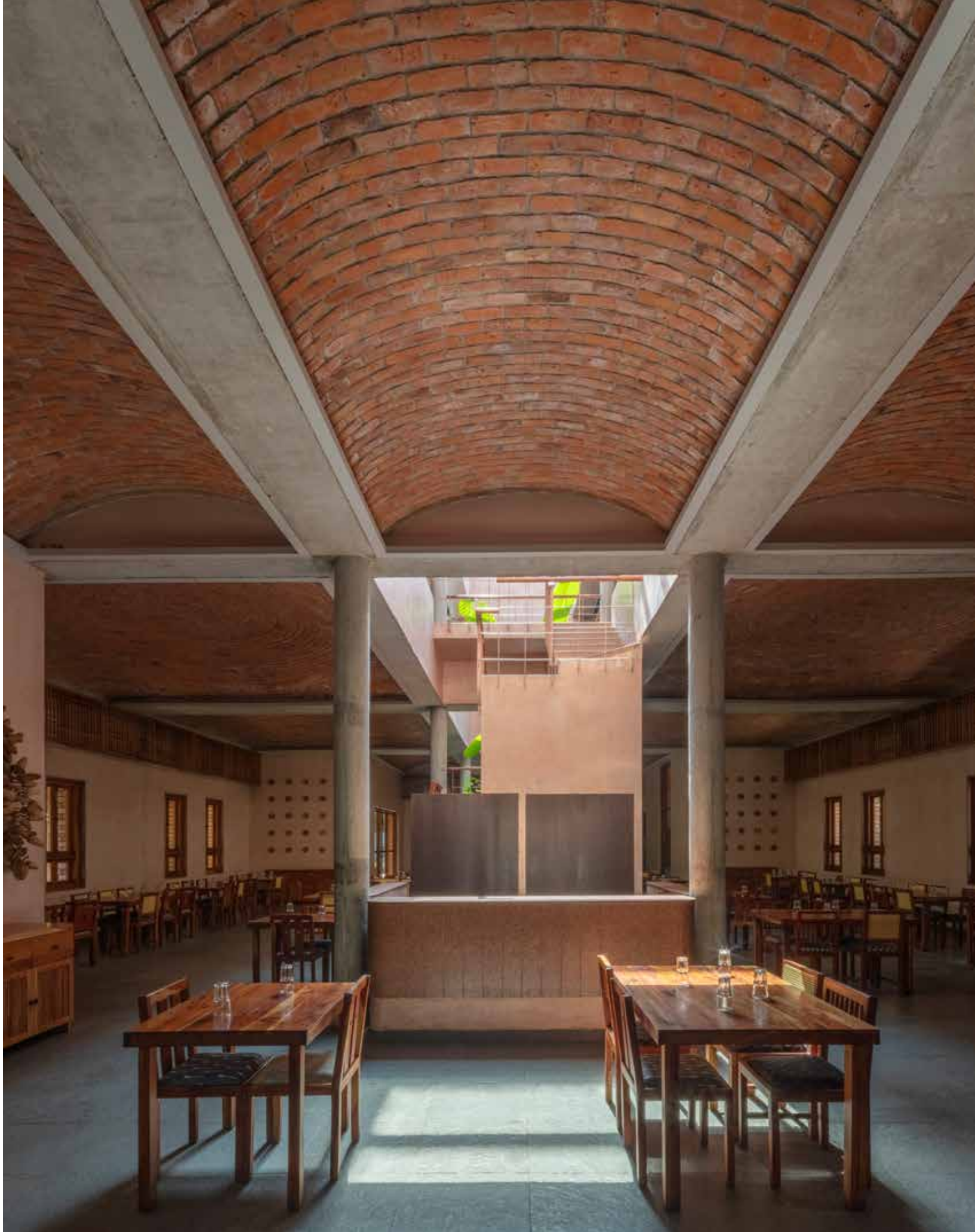




The furniture within Telugu Medium resonates with the space's DNA, featuring a blend of timeless, simple, and evocative pieces that offer a modern interpretation of South Indian dining. The interiors showcase brick-moulded ceilings, scaling concrete columns, pink lime plaster-washed walls, and textured tandoor flooring, creating an uninterrupted composition that speaks to the soul of the Deccan. The internal staircase soars into the double-height atrium infused with fluted glass for privacy and a play of light. The ground level hosts a centrally located bar counter, characterized by locally sourced pink granite. On the other hand, a rectangular pond with black limestone tiles and an expansive concrete bench creates a tranquil focal point.

Telugu Medium, through its exploration of indigenous materials and vernacular design, is a collision of worlds, creating an experience that goes beyond visual aesthetics. It embodies the spirit of rusticity and contemporary design influences harmoniously coexist in one of the city's most luxurious settings.





Healthcare Advancement and Design Innovation

The Northern Railway Diagnostic Center, an extension of New Delhi's Northern Railway Central Hospital, embodies India's healthcare progress. Designed by Creative Designer Architects, this PPP aims to enhance diagnostic and radiology services with state-of-the-art facilities.

The Northern Railway Diagnostic Center is an offshoot of New Delhi's coveted Northern Railway Central Hospital, a project showcasing the remarkable strides made in the Indian healthcare landscape. Designed by Creative Designer Architects (CDA), the diagnostic centre is a public-private partnership (PPP) between the renowned Sarvodaya Healthcare and Northern Railway Central Hospital (NRCH); the new centre is intended to reinforce NRCH's diagnostic and radiology arm with state-of-art radio-diagnostic services.

Spread over 3,500 sq. ft; the stand-alone block is an adaptive reuse project that breathes a fresh lease of life into a dilapidated ancillary building of the NRCH campus, which previously housed the laundry facility. With an intent to build a brand-new imaging centre at Northern Railway Central Hospital, this public-private partnership is set to raise the bar of public healthcare facilities in the country, making the facility accessible and affordable to all patients, including railway beneficiaries, both retired and working, as well as any patient seeking high-quality imaging services.





A seamless shaded pedestrian access from the existing Northern Railway Central Hospital leads to the entrance lobby of the diagnostic centre, which leads the patients to a 10-foot-wide corridor allowing access to all radio-diagnostic areas.

Unparalleled Functionality

At NRDC, functionality takes centre stage. The space is efficiently segregated into different departments to ensure a seamless flow of operations. The facility houses cutting-edge diagnostic services, including MRI, CT scan, X-Ray, USG, DEXA scan, and Mammography. This comprehensive range of services provides patients with timely and accurate diagnoses. The diagnostic centre is designed to be patient-friendly and ADA-compliant to accommodate individuals with disabilities or special needs. Step-free access, wider door widths, handrails, grab bars, and braille signage cater to the diverse requirements of patients.

NRDC goes beyond just providing exceptional medical services. The facility features a VIP lounge that serves as a collaborative space for NGOs and charitable groups to engage in social discussions. By fostering a sense of community and collective responsibility, NRDC supports healthcare and catalyzes positive social change.







Design Approach

CDA has taken a minimalist contemporary approach in the design of the exterior by using white and grays along with quaint earthy hues - reddish browns derived from Indian railways. The railway influence can also be seen in the articulation of the openings, like small rectangular windows and curved vertices, monochrome fluted aesthetic clad in gray grooved texture paint with aluminium panelling which intends to express the campus legacy, context and a spectacle of the present zeitgeist.

Explaining the design details Ravideep Singh, Principal Architect, Creative Designer Architects says, "The interiors are designed to promote patient comfort. The large transparent entrance lobby is adorned with warm healing colours in beige and brown shades and smooth curved forms that have been derived from neuro-aesthetic design principles. This design approach significantly reduces stress levels for patients, creating a soothing atmosphere exuding a sense of tranquility. The durable granite flooring is designed to withstand the high footfall of outpatient traffic, ensuring the centre's longevity and efficiency."

A User-Centric and Sustainable Approach

NRDC prioritises patient comfort in every aspect of its design. Diagnostic rooms are thoughtfully designed with minimal exposure to natural light as, technically, diagnostic rooms are supposed to be dark, which is crucial for accurately reading various shades of grey for precise diagnoses. However, it has been found that these dark spaces could come across as intimidating to patients and cause stress. Studies and research demonstrate that mimicking nature colours, visuals, and lighting can help positively address these concerns. Therefore, both the MRI and CT scan rooms were designed with illuminated skylights with natural colours, patterns, and lighting to ease patients psychologically.

NRDC's commitment to sustainability is evident through its integration of eco-friendly practices. The adaptive reuse of the existing building adds character and reduces environmental impact. Solar panels have been installed to harness clean energy, contributing to the centre's reduced carbon footprint. Furthermore, solar passive space planning optimises natural daylight usage, minimises heat gain, and enhances energy efficiency.

With its visionary design, the Northern Railway Diagnostic Center exemplifies the synergy between healthcare advancement and design innovation. Through the collaboration of public and private entities, this facility aims to bridge the healthcare gap and redefine healthcare experiences for patients and practitioners alike. By combining modern aesthetics, functionality, patient comfort, sustainability, and inclusivity, NRDC sets a new benchmark for diagnostic centres in India, paving the way for a brighter and healthier future for all.

Material Details

ACP/ Glass/Concrete: Aludecor

Sanitary ware/Fittings: Kohler

Flooring: Tarkett, Kajaria, RK marbles

Furnishing: Newport

Furniture: Bespoke

Air Conditioning: Daikin

Lighting: Bespoke, Philips

Paint: Asian Paints

Arts/Artefacts: Bespoke

Elevator: Thyssenkrup

Unveiling the Design Champions

The Society Interiors Design Competition & Awards 2024 is a celebration of design visionaries, honoring their excellence, innovative thinking, boundless creativity, and ability to deliver designs that surpass expectations. Join us as we pay tribute to those who redefine the boundaries of design, inspiring and pushing the industry forward.

SOCIETY INTERIORS and Design, India's leading architecture and interior design magazine has been a forerunner in the industry of design publications for many years. The esteemed magazine has been holding Society Interiors Design Competition & Awards, a Pan-India level zonal competition for the students of Architecture and Interior Design Colleges. This year we saw participation from all

the zones North, South, East and West. This all-India competition has, for 21 years now, provided students with a platform to showcase their talent in the field of architecture and design. Besides through the Society Interiors Design Competition & Awards, the magazine has felicitated architects and designers who have been constantly setting new benchmarks in their respective fields with their diverse body of work at the grand finale.



Lamp lighting ceremony

The competition celebrates excellence, rewards creativity & innovation in design and also prepares the students for bigger competition and for better future prospects. During its 21 years' journey, the event has discovered and launched many promising names in the architecture & design business. The event serves as a unique opportunity for students to interact with top professionals of the industry, gain guidance of professional jury who nurture and bring forth their talents and showcase it to the industry. These students also have the privilege of sharing the same platform where senior architects and designers are felicitated. The platform is huge and learning is tremendous. The 21st edition of the Society Interiors Design Competition & Awards 2024 saw some amazing talent come forward as students from across the country showed us what they can do. Hosted by 'Society Interiors & Design' magazine, the competition culminated in an award ceremony at the luxurious Taj Santacruz, Mumbai, and gave our young competitors a chance to mingle with some of the best and brightest in the realms of architecture, design and construction. Held on 25th February 2024, Society Interiors Design Competition & Awards 2024 hosted by emcee, Pooja Kanwal and was powered by **ALUCOBOND** and **Maharashtra State Road Development Corporation (MSRDC)**.

ALUCOBOND is a pioneer in Aluminium Composite Material (ACM) and has globally revolutionized the architectural appeal and functional performance of buildings. Since its inception in 1969, it has been the most preferred brand of ACP for architectural cladding applications, setting new norms of how the buildings would look and be designed globally. Today, ALUCOBOND has become synonymous for ACP / ACM, which is a result of continuous research and development of various products, surface finishes and solutions. Being a global player, ALUCOBOND has expertise of connecting the dots across the world for any mega project in India with an architect and consultant located in another part of the world; so that any such project can be implemented in real time and seamlessly.



Senior Architect, Noshir Talati with his team, Ashok Dhamankar and Sunil Khavnekar.



Ranjeet Sharma



Rajesh Patil with Ashok Dhamankar



Ashok Dhamankar with Shashi Prabhu and Nari Hira



Pearl with Hafeez Contractor



Ashok Dhamankar, Shashi Prabhu, Rajesh Patil and Hafeez Contractor





Ashok Dhamankar, Shashi Prabhu, Ranjeet Sharma and Hafeez Contractor



Alan Abraham, Sandeep Maheshwari, Senior Architect, Noshir Talati, and Jitendra Mehta



Sachin Gupta receiving the award from Nari Hira, Shashi Prabhu, Hafeez Contractor and Ashok Dhamankar



Team Magnate Publishing

Maharashtra State Road Development Corporation (MSRDC) was established as a fully owned entity of the Government of Maharashtra in 1996. MSRDC soon won huge appreciation for the rapid progress it made in constructing and completing 55 flyovers in the Mumbai region in a record time. In its 27 years of existence, MSRDC has not only successfully built the mammoth Hindu Hrudaysamrat Balasaheb Thackeray Samruddhi Mahamarg, but has also delivered many other state-of-the-art engineering marvels. From India's first six-lane concrete, high speed and access-controlled expressway connecting the two major cities of Mumbai and Pune, to the country's first cable stayed sea link bridge, the MSRDC has been managing mega projects since its inception. It has truly transformed the face of Maharashtra.

As is tradition, the evening kick-started with the ceremonial lighting of the lamp with media magnate Nari Hira, Ashok Dhamankar, Swati Balgi, Sunil Khavnekar, Shivendra Parihar, Preeti Nair, Priya Prabhu, Andrea CostaBir and Mario Ferreira from Magnate Publishing along with Senior Architect, Noshir Talati, Chairman-Founder, Talati & Partners LLP and Ar. Hafeez Contractor from Architect Hafeez Contractor and Ravi Roushon.

The magazine took the opportunity to honour some iconic names in the design and construction business for their incredible contributions to the industry. This illustrious list included the crème de la crème of the architecture, design and construction fraternity like, Architects, Shashi Prabhu, Sunil Gambani, Ninand Tipnis, Alan Abraham, Bhavi Mehta, Rahul Gore and Sonal Sancheti, Manish Dikshit, Shitesh Agarwal and reputed builders like Raju Bhise, Jitendra Mehta and Sagar Sukhwani to name a few. The other important dignitaries who attended the grand event were Milind and Radhika Pai, Mujib Ahmed and Lalita Tharani, Prakash Anjarlekar, Madhavi Bhise, Chhand Bhise, Ketan and Manisha Sheth, Kanika Bawa, Neilesh & Bhavya Kenkare, Prasad Badle, Mandar Parab, Prasanna Ghag, Sandeep Kothari, Ashotosh Wad and Sonia Potdar to name a few.

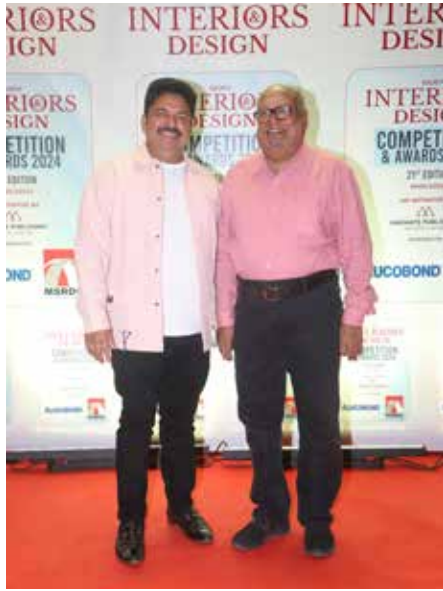
The awards ceremony started with FELICITATING ARCHITECTS for their path-breaking contribution in redefining the architecture and design industry.













The FIRST set of Awards was The Design Legend. The first set of awards in this category was the Lifetime Achievement Award.

Ar. Noshir Talati - Lifetime Achievement Award

Mr Talati is the Founder & Chairman of ti & Partners LLP. In 1964, at the young age of 22, he embarked on his professional journey in collaboration with his friend Mr. Naushir De Vitre. Together, they pioneered the field of Interior Design. Their innovative use of materials and impeccable craftsmanship revolutionized the Architecture and Interior Design segment, setting a new standard for the industry. Drawing inspiration from great design masters like Frank Wright, Mies Van Der Rohe, and Le Corbusier, they introduced new trends and elevated the parameters of Interior Design. Their mantra, "What works good is better than what looks good," exemplifies the practical and effective approach to design.

His firm has more than five decades of experience in the realm of architecture and interior design. They believe in providing design services beyond what is expected by going the extra mile for client satisfaction. Today, TPA is spearheaded by Xerxes Talati and Ratish Patil under the valuable guidance of Noshir Talati and Naushir DeVitre. For the practice, which values its team members, attention to detail is a major aspect of work. TPA has an interdisciplinary team strength of over 200+ people and have established themselves as a premier design brand with more than 3,000 successfully completed projects and eight cross-country collaborations. Not to mention, the firm has won several leading awards and accolades over the years, like the Hind Ratan Award for Outstanding Service Achievements and Contribution 1994, awarded to Noshir.

Noshir Talati's innate love for architecture during his growing years in and around Victoria Terminus, Mumbai, predetermined his pioneering footprint in India. Equipped with a G.Arch from Rachana Sansad's Academy of Architecture, he went on to get a Master's with distinction at Michigan, Ann Harbour. Talati brought back with him the deep influence of 20th century modernists and master builders: Frank Lloyd Wright, Mies van der Rohe and Le Corbusier. The chairman of Talati and Panthaky Associated Designers (TPA) started his architectural practice in 1964 in a modest 100sq-ft office in Mumbai. The humble beginnings were nourished with his passion for design; shared by his then employee, now present partner, Naushir De Vitre. TPA is a reputed holistic firm with their innovative function-driven architectural process rendered by their experienced staff. Simple lines, attention to detail and rejection of fads is TPA's hallmark. Talati picks out Ceejay House and Palais Royale in Worli as the projects he is particularly fond of. While he sees the infinite possibilities in the world of design with avenues of innovation waiting to be tapped, Talati's virtues of hard work and pure love for the profession are irreplaceable.



Swati Balgi, Nari Hira, Hafeez Contractor, and Ashok Dhamankar giving award to Noshir Talati



The next SET of AWARDS was the Global Design Legend & India's Pride

Architect Hafeez Contractor - Global Design Legend & India's Pride

Hafeez Contractor has impacted the skyline of much of the built environment of metropolitan India, with an unmistakable identifying stamp. He set up practice in 1982 with a dedication to design excellence, efficient delivery and sophistication in building technology. Today, Hafeez Contractor heads the largest architectural firm in India, with over 550 team members, comprising of architects, urban/town planners, interior designers, landscape artists, civil engineers, CAD operators and 3D and graphic designers. The firm has to its credit over 2500 clients and 7.2 billion square foot of ongoing projects in 100 cities and 5 countries. Hafeez Contractor was born in Mumbai and studied at Boy's Town Boarding School, Nasik. He completed his architectural studies from the Academy of Architecture in Mumbai and graduated from Columbia University, New York, in 1976-77. However, his career began far earlier, in 1968 when he worked as apprentice with Ar. T. Khareghat, a firm he became an associate partner with, in 1977. Between 1977 and 1980 Ar. Contractor has been visiting faculty at the Academy of Architecture, Mumbai.

He is the winner of over 75 National and International Awards for excellence in contributions to architecture including CWAB Architect of the Year (2006 to 2013), A+D Hall of Fame for the Decade Award. He has twice has been included in India Today's Most Powerful Indians List in last decade and has won innumerable awards for best residential, commercial, educational and hospitality projects across India. Ar. Contractor's passion is to create structures that exemplify functional and aesthetic qualities and has shaped and changed the urban built landscape of the country through provocative, unpredictable and revolutionary ideas while executing a wide range of architectural projects. His work spans the gamut of possibilities of the constructed space: bungalows, residential developments, hospitals, hotels, corporate offices, banking and financial institutions, commercial complexes, shopping malls, educational institutions, recreational and sports facilities, townships, airports, railway stations, urban planning, civic redevelopment and infrastructure projects and low cost housing. The impressive chart of work that Ar Contractor catalogs, includes some of the tallest structures on the subcontinent, The Imperial Towers, Mumbai; one of the tallest residential buildings in the world, 23 Marina, Dubai; has modernized the two busiest airports of the country, Mumbai and New Delhi; and one of the best cricket stadiums of the world, DY Patil Stadium, Mumbai. Apart from commercial construction projects, he has invested in researching and conceptualizing ways in which to positively impact the urban environment with proposals for public spaces and slum redevelopment. These include 'The Western Waterfront Development,' a scheme that attempts to rejuvenate the urban environment by creating large, open, green spaces in Mumbai and streamlining the city's transport needs, and is finally being realized as West Line Freeway Project .

Hafeez Contractor has also worked on solutions for the issue of slums plaguing Mumbai, along with officials of the urban development department and senior authorities, by introducing a Slum Rehabilitation Scheme. He is currently empanelled and working with the housing boards of several Indian states including Maharashtra, Rajasthan, Bihar, Chhattisgarh, Karnataka, Uttar Pradesh, Madhya Pradesh and others. Hafeez Contractor was a member of the Bombay Heritage Committee and the New Delhi Lutyens Bungalow Zone Review Committee. His impressive practice, which has spanned over three and a half decades, is based on a core philosophy. He asserts, "Architecture should be honest and must respond to the spirit of the time characterized by distinct ideas, disparate missions, contrasting convictions and divergent preferences. It is this enduring belief that has brought me to where I am today." A strong advocate of the vertical growth of cities, judicious land use and the need for sustainable, compact cities to maintain a perfect harmony between increasing population and limited land resources, Ar. Contractor has also worked with a leading Gurgaon-based developer to influence government that high-rise development has more advantages in terms of quality life versus intense low-rise structures dotting the landscape. Ar. Contractor is passionate about social housing and his dream is to provide a house for every Indian.



Nari Hira and Shashi Prabhu felicitating Hafeez Contractor



The next Category was The Growth Driver of Maharashtra.

Dr Anilkumar B Gaikwad, Vice Chairman & Managing Director, Maharashtra State Road Development Corporation (MSRDC) (award received by Rajesh Patil, Joint MD, Maharashtra State Road Development Corporation (MSRDC) - The Growth Driver of Maharashtra

MSRDC was formed in 1996 for the purpose of constructing mega projects in the Public Works Department. Since 1996, MSRDC has constructed 55 flyovers in Mumbai; plus the Mumbai-Pune Expressway. These are MSRDC's big achievements of the past. Post this, the then Hon. Chief Minister of Maharashtra Devendra Fadnavis announced the next mega project which was the construction of the Nagpur-Mumbai Expressway (Hindu Hrudaysamrat Balasaheb Thackeray Maharashtra Samruddhi Mahamarg). At that time, four projects were undertaken by the Government of Maharashtra including the Versova-Bandra Sea Link and the Missing Link project on the Mumbai-Pune Expressway. It is a 13 km missing link from Khandala to Lonavala with an 8.9 km long and 23 metre wide tunnel which is set to be the world's widest tunnel. This tunnel project is expected to be completed by September 2024. Thane Creek Bridge 3 was the fourth project.

These projects are not easy to complete because there are several technical and financial issues that crop up with regard to their execution. There are 18 townships that have been notified along the Expressway from Nagpur to Mumbai and out of that, work on eight townships is in progress. An architect consultant has been appointed and the project preparation is in progress. The township is a long-term project that will require years together to develop. But 18 places have been notified and in phases, we will build the towns. It is the MSRDC's responsibility to provide the minimum infrastructure required for the township - roads, electricity and water supply. They have a land pooling model for the development and the townships are of different areas adding up to more than 1,000 hectares.



Ashok Dhamankar, Shashi Prabhu, Rajesh Patil and Hafeez Contractor



The next honours was for the category Outstanding Contribution to Architecture and Commercial Design.

Ninad Tipnis, JTCPL Designs (award received by Vipul Tapke) - Outstanding Contribution to Architecture and Commercial Design

Ninad Tipnis, is Principal Architect of JTCPL Designs which specializes in creating aesthetic workplaces and recognized as a design company with incessant creativity, discerning taste, and for meticulous execution. JTCPL Designs has worked with some of the world’s best corporates and banks all across India.

After a robust domain experience of almost a decade, in 2002, Ninad Tipnis founded JTCPL Designs, an architect led design-build firm which functions in the Corporate/Commercial space and has successfully worked on leading entities nationally and internationally. “It is never about ‘Race Day’, it is who you become while you practice,” believes Ninad. A visionary, Ninad has nurtured JTCPL Designs from a start-up to a global organisation today, having its presence in India, UAE, USA, Jordan, Malaysia, Egypt, Sri Lanka, Singapore, Indonesia, Cambodia, China, Myanmar, and Vietnam.

A graduate from the Academy of Architecture, Mumbai, more than a creative leader, Ninad is a great motivator and mentor. His ideas and insights have impacted the industry and he has been recognised with distinguished awards by renowned design bodies. JTCPL has recently completed the project AL ADHEED Ras AlKhor – Al – Manama St – Dubai – United Arab Emirates. It is a shining example of a service-oriented governance – an initiative for accelerated civil justice. Besides this, it has worked on BNB Paribas India Solutions Pvt Ltd office in Mumbai. Here, the shift in psychology and physiology is fulfilled through a variety of congregational areas.



Sandeep Maheshwari, Vipul Tapke , Noshir Talati and Jitendra Mehta

Alan Abraham from Abraham John Architects - Outstanding Contribution to Architecture and Commercial Design

Abraham John Architects is a multidisciplinary architecture, interior design, landscaping, and urban planning studio founded in 1967 by Abraham John in Bombay. A multifaceted personality, Alan is both an architect and a photographer. For five decades, it has been providing innovative design for a diverse range of commissions – from niche residential developments to corporate and commercial projects, hospitality, retail, administration and office buildings for public and private clients, as well as master planning. The design approach of the studio is to re-connect architecture with nature, make optimum use of space, natural materials, lighting and landscape to reinvent and transform spaces. Alan has also been working on urban design solutions to improve Mumbai and make it a more liveable, green, eco-friendly city through proactive initiatives such as The Bombay Greenway Project, Winner of the International Urban Planning & Design Competition, Velo-city 2013, Austria. He is also one of the founding members of Bandra Collective, a group of architects involved with the design of public spaces in Mumbai. Alan has completed A Villa in Verbier, Switzerland which involved upgrading the old villa to a modern one, and GM Park at Bandstand, Mumbai, a new urban square of the city. Abraham John ARCHITECTS is a multidisciplinary architecture, interior design, landscaping and urban planning firm founded in 1967. Abraham John & Alan Abraham are the Joint Principal

Architects of Abraham John Architects. The firm boasts a diverse portfolio of projects, ranging from private luxury villas and high-end residences to unique offices and institutional buildings. In addition to its commercial work, the firm has a strong commitment to charitable causes and has contributed to the design and construction of earthquake and cyclone-proof buildings in several regions across India.

At Abraham John Architects, the team is dedicated to creating design that inspires, transforms, and improves the way people live and work. The firm's approach to design emphasizes a connection with nature, optimizing use of space, and utilizing natural materials, lighting, and landscape to enhance the built environment. Customization and attention to detail are at the forefront of the firm's approach, and they strive to achieve a balance between functionality, aesthetics, context, climate, materials, cost, and time-frame in every project. Sustainability, honesty in design, and client satisfaction are the driving forces behind the firm's success. Whether working on large-scale commercial projects or intimate residential spaces, the team at Abraham John Architects is dedicated to delivering unique and innovative design solutions.



Alan Abraham, Sandeep Maheshwari, Senior Architect, Noshir Talati, and Jitendra Meht

Manish Dikshit from Aum Architects - Outstanding Contribution to Architecture and Commercial Design

Ar. Manish Dikshit, the founding Principal of Aum Architects Mumbai, believes in conceptualizing design with efficiency and responsiveness, irrespective of its scale and dominion. His adaptive style of design has led him to be featured betwixt 100 Top Design Luminaries by various magazines in India and abroad.

He has also been acknowledged for his works in various National and International magazines. His fervour interest and sincerity of understanding complexities of Architecture and Design has allowed his work on large-scale projects ranging from sprawling townships to urban scales master plans from Los Angeles to Grand Coast in Australia.



Manish Dikshit, Sandeep Maheshwari, Senior Architect, Noshir Talati, and Jitendra Mehta

Piyush Khandelwal from Atelier Design Consultants Pvt. Ltd. - Outstanding Contribution to Architecture and Commercial Design

Atelier Design Consultants Pvt. Ltd. is a multidisciplinary design practice whose work seamlessly weaves interior and exterior spaces, from large architectural ideas to the smallest of furniture details. The firm works in disciplines of Architecture, Interior Design, Master Planning and landscape.

Atelier, a beacon of architectural ingenuity and design excellence, stands as a testament to the transformative power of architecture. Founded with a vision to transcend conventional boundaries and redefine the very essence of spaces, Atelier has emerged as a frontrunner in the realm of architectural innovation. Guided by a profound commitment to creating environments that resonate with harmony, functionality, and aesthetic allure, Atelier approaches each project as a canvas awaiting the strokes of visionary brilliance. At the heart of Atelier's philosophy lies a deep-rooted belief in the intrinsic connection between architecture and human experience—a belief that inspires every design endeavor undertaken by the firm.

Led by a team of seasoned architects, designers, and visionaries, Atelier combines technical expertise with boundless creativity to craft spaces that not only fulfill their utilitarian purpose but also evoke emotion, stimulate thought, and foster connections. From sleek urban skyscrapers to rustic countryside retreats, every Atelier creation bears the distinctive imprint of meticulous craftsmanship and unwavering dedication to perfection.



Sandeep Maheshwari, Piyush Khandelwal, Senior Architect, Noshir Talati, and Jitendra Mehta

**Manoj Daisaria, Daisaria Associates
- Outstanding Contribution to
Architecture and Commercial Design**

Manoj Daisaria is the principal architect of Daisaria Associates with 30+ years of experience in the field of liasoning, approvals and project management. With his allied degree of Law, his expertise lies in project feasibilities, technical guidance, legal solutions and more. He has been a renowned liasoning architect of Mumbai with over 1000 projects under his name and has given his consultancy for multiple high rise projects, townships, malls, schools and commercial complexes. His Honesty, hard work, commitment towards client relations along with his acute eye for detail and honed expertise in the field of building bye-laws and development regulations have been pivotal to make the organization the Top Liasoning firm of Mumbai. He believes that every building or proposal is not just a challenge, but an opportunity to learn, grow and foster within the constraints. His virtues have made sure that the organization never compromises on two important aspects - the quality of work and the quality of ethics.



Manoj Daisaria, Sandeep Maheshwari, Senior Architect, Noshir Talati and Jitendra Mehta

Rahul Gore and Sonal Sancheti from Opolis Architects - Outstanding Contribution to Architecture and Commercial Design

Sonal Sancheti has studied architecture at CEPT, Ahmedabad and has a Master's degree from the Southern California Institute of Architecture, Los Angeles.

Sonal's keen interest in Japanese Architecture led her to do intensive undergraduate research on the Traditional Japanese Architecture. She has worked with world famous Architect Fumihiko Maki in Tokyo. Having travelled extensively across the globe, imbibing art and architecture from all over the world to absorbing sensibilities and experiences from different cultures, Sonal has developed a distinctive creative style of her own. In January 2001 she started _OPOLIS a multidisciplinary design practice with Rahul Gore. Bringing their individual aesthetic strengths, technical expertise, creative inclinations and artistic vision to the table, the duo has made _OPOLIS one of the leading architectural firms in the country. _OPOLIS has won numerous National and International Awards in the past few years. Their work has been widely published in leading national and international architectural magazines.

"You only live once but if you do it right, once is enough!" This is the mantra Sonal follows to live her life to the fullest. Her penchant and passion for learning and attaining experiences has led her to pursue several interests in allied fields such as Film Making, Set Designing, Photography, Scuba Diving, Trekking in the Himalayas and studying Comparative Mythology at the University of Mumbai. She has recently co-authored a book "Scripting Destiny". Sonal's diverse experiences have led her to be invited as a speaker to various architectural institutions. She has also been a part of various panel discussions throughout the country. With her ongoing practice, she also takes out time to pass on her knowledge to the Gen Next. She is a visiting faculty of the design at Kamla Raheja Vidyaniidhi Institute of Architecture in Mumbai. Sonal is also currently pursuing a Post Graduate Diploma in Indian Aesthetics in Mumbai University.

Rahul Gore with his impeccable qualifications, excellent technical expertise and extensive background in urban design has several achievements under his belt. He studied architecture at Center for Environmental Planning and Technology (CEPT) in Ahmedabad and completed his Master's Degree in Urban Design at the University of California, Los Angeles (UCLA). He has worked with the world-renowned Maki and Associates in Tokyo when he won the prestigious Bunka Cho Scholarship.

In January 2001, Rahul Gore along with Sonal Sancheti set up _OPOLIS, a multidisciplinary design practice. Since then the firm has grown from strength to strength winning several national as well as international awards and has been widely published. _Opolis was part of the Indian team that won acclaim at the International Urban Design Competition for the Design of Sustainable Cities hosted by Japan at the World Gas conference in June 2003. Opolis has recently completed the Bihar Museum, Patna project - won as an international competition along with Maki and Associates, Tokyo which is now nearing completion. _OPOLIS in collaboration with Steven Holl Architects, New York won the competition for Extension to the Bhauji Daji Lad Museum at Byculla, Mumbai. More recently, Maki and Associates and _OPOLIS teamed up once again to win the Amarvati Capital City Complex competition.

Rahul's passion for architecture has inspired him to help others acquire knowledge and learn from his experiences. He is a visiting juror at the Kamla Raheja Vidyaniidhi Institute of Architecture in Mumbai. He is also an Associate member of the Indian Institute of Architects (IIA). Rahul believes that in order to have a well-rounded personality, it is essential to observe and imbibe the diverse cultures of the world. To that end, he is an avid traveler. He is also a sports and fitness enthusiast and loves his game of tennis, his runs and work-outs.



Rahul Gore and Sonal Sancheti receive the award from Ashok Dhamankar, Senior Architect, Noshir Talati, Sandeep Maheshwari and Jitendra Mehta

The next honours was for the category Creative Excellence in Architecture and Interior Design. There were two honors in this category

Sunil Gambani, Drishti Architects and Interior Designers - Creative Excellence in Architecture and Interior Design

In 2006, the principal architect Sunil Gambani, using over 25 years of experience as senior associate with Architect Hafeez Contractor, started Drishti Architects and Interior Designers armed with an emphatic belief in design and architecture along with the desire to use these towards making spaces better. Today, Drishti Architects stands tall as a multi-disciplinary firm with the versatility of the team of pragmatic and honest designers as its key asset, delivering value to clients and society through design and integrity.

Our long experience has provided us with exceptional insight that helps us create designs appropriate not only to the end user but also to the habitat, environment and similar stakeholders being impacted in the process of design and execution. Their long years of service are an outcome of cooperative endeavor and collaboration, resulting in long-standing client relationship and association. They maximize the potential of every project, devoting attention to detail from concept to completion and beyond. As a close knit organization, every individual is highly motivated and committed to continued improvement and lifelong learning. An enthusiastic team that has the confidence and flexibility to go beyond standard parameters, they enjoy our role in filling the lacuna in an ever evolving design environment.



Sunil Gambani receiving the award Ar. Noshir Talati, Sandeep Maheshwari and Jitendra Mehta

Amol Prabhu from Shashi Prabhu & Associates (SPA) - Creative Excellence in Architecture and Interior Design

Since joining Shashi Prabhu & Associates as a Partner in 2005, Mr. Amol Prabhu has been actively involved in reorganizing the company structure and setting up standardisation platforms in design, management and financials to expand the firm into a professional entity. His expertise covers a broad spectrum of services like Architecture, Interior Design, Engineering and Project Management Consulting services.

Shashi Prabhu & Associates is a design firm, headquartered in Mumbai, with Seven other office locations including UAE and Africa. Their company was founded in 1967 by Ar. Shashi Prabhu as a small proprietor firm and today, after 50 years, we have grown into a large multi-disciplinary partnership organization offering a host of services to our clients such as Master Planning, Architectural Design, Interior Design, MEP & Structural Design, Value Engineering, Estimating, Quantity Survey and related Project Management Services, all under one roof.

Their primary goal has always been to create high quality sustainable assets which meet the strategic business and financial objectives of their clients. At Shashi Prabhu & Associates, all their endeavours are driven by their core values that reflect in their designs and work as well. Through excellence, integrity, continuous improvement and commitment to technology, we strive to deliver client-driven and people-centric solutions, which will stand the test of time.



Shashi Prabhu receiving the award from Ar. Noshir Talati, Sandeep Maheshwari and Jitendra Mehta

The next honours was for the category Outstanding Contribution To Architecture And Interior Design

Bhavi Mehta from Inside Art - Creative Excellence in Architecture and Interior Design

Inside Art stands as a beacon of design and aesthetics, mirroring the visionary spirit of its founder, Bhavi Mehta. Born into a family entrenched in real estate, Bhavi charted a unique course into interior design, driven by a fervent passion for creating spaces that speak. Her specialized education from Rachana Sansad, coupled with invaluable hands-on experience with architects and consultants, has fine-tuned her technical skills, setting her apart in the design world. The creation of Inside Art was an expression of Bhavi's creative passion, quickly becoming a testament to her design philosophy. Over the span of two decades, Bhavi has led Inside Art to redefine interior spaces across residential, commercial, and ground-breaking projects like India's first intelligent game court.

Her work, known for its diversity and innovation, has been recognized in prestigious publications and received numerous awards, all testament to the signature style and flair uniquely Inside Art. Among her many skills, space zoning has emerged as Bhavi's forte, showcasing her ability to transform any area into a functional, aesthetically pleasing environment. This skill underscores her approach to design, emphasizing the importance of creating spaces that are not only beautiful but also perfectly attuned to the needs of those who inhabit them. While Bhavi's journey included collaboration with Deepal Parekh, her childhood friend and former colleague, it is her singular vision and expertise that continue to propel Inside Art forward. Bhavi Mehta's unwavering belief in her creative vision, combined with her technical expertise and extensive experience, positions Inside Art as the definitive choice for those seeking to bring their dream spaces to life.



Ashok Dhamankar, Bhavi Mehta, Shashi Prabhu and Hafeez Contractor

Born into a family entrenched in real estate, Bhavi charted a unique course into interior design, driven by a fervent passion for creating spaces that speak. Her specialized education from Rachana Sansad, coupled with invaluable hands-on experience with architects and consultants, has fine-tuned her technical skills, setting her apart in the design world. The creation of Inside Art was an expression of Bhavi's creative passion, quickly becoming a testament to her design philosophy. Over the span of two decades, Bhavi has led Inside Art to redefine interior spaces across residential, commercial, and ground-breaking projects like India's first intelligent game court. Being born in

an over educated family with all CA's and MBA 's quitting graduation was not a choice so she did her interiors alongside of commerce. At the age of 18, she started going to dad's construction site which is typically SRA projects no fancy designs but credits her strong technical strength to come from there. Making BMC drawings to maximize every inch of space available and spacing planning has become her forte. Her first project in interiors was in the year 2004 and in the year 2005 she did a project spanning 1500 sq. ft. for a friend and then partnered with her childhood friend in 2006. For the past 20 years, Bhavi has done 70 plus residences, commercial spaces, play schools boutique, club house, row houses in goa, resort in Alibaag and residences in Dubai to name a few.



The next honours was for the category Outstanding Contribution in the field of Architecture and Interior Design.

Shitesh Agarwal from Sankalp Designers - Creative Excellence in Architecture and Interior Design

Shitesh Agarwal of Sankalp Designers is a dynamic professional who heads a team of young, creative and highly talented professionals headed by Architect Shitesh Agrawal. Since their inception in 2002, they have undertaken several prestigious projects, of varying magnitudes and design styles, in Architecture and Interior Design. Their creative process is synergistic; involving all team members from the inception. It begins with the definition and understanding of project objectives and clients' values. Innovative response to these parameters is the key to inspired design.

For him, success and excellence in design are intricately tied to innovation. As a designer, the thrill of crafting something truly innovative goes beyond just meeting expectations — it's about surpassing them in ways that redefine what's possible.

When he embarks on a project, he sees it as an opportunity to push boundaries, challenge norms, and introduce fresh perspectives. The satisfaction and happiness he derives from this process stem from the emotion of knowing that his work has sparked something new, something that resonates deeply with others. Success for him isn't just about delivering a product; it's about daring to think differently, reimagine possibilities, and leave a lasting impact. While appreciation for his work undoubtedly fuels his drive, it's complemented by a deeper motivation rooted in continuous learning and evolution. Each day presents an opportunity to expand his knowledge, hone his skills, and strive for excellence. The prospect of mastering new concepts, overcoming challenges, and pushing the boundaries of his capabilities serves as a powerful source of inspiration. Moreover, the satisfaction derived from personal and professional development fuels his intrinsic motivation, propelling him forward even in the face of obstacles.



Ashok Dhamankar, Shashi Prabhu, Ar. Hafeez Contractor and Shitesh Agarwal

His secret to facing challenges is two-fold: Daring innovation and maintaining a calm mind. Innovation inherently brings obstacles, but viewing them as integral to the process fosters resilience and breakthroughs. Through daring innovation and a calm mind, he tackles challenges with creativity and confidence, ultimately achieving success. The next goal he is striving to achieve is to position our firm as a leader capable of efficiently managing large-scale projects. They aim to expand our presence nationwide, becoming a go-to choice for clients seeking excellence and reliability on a grand scale.

Each day, we set new benchmarks, pushing boundaries to elevate our capabilities and reputation. Through strategic planning, dedication, and unwavering commitment to excellence, they are poised to realise this goal and solidify our position as a top-tier firm in India and beyond. He maintains a clear vision of his goals and urges others to stay committed to them, even in the face of obstacles or setbacks. Secondly, he urges his peers to embrace a mindset of continuous learning and improvement, as growth is essential for progress. Thirdly, he advises to cultivate strong relationships and networks within your industry, as they can provide invaluable support and opportunities.



The next honour was for the category --- Architect of the Year (Residential Commercial & Retail)

Sachin Gupta from Sachin Gupta and Associates - Architect of the Year (Residential, Commercial & Retail)

In the world of interior design, there exists a realm where creativity merges with sophistication, and luxury knows no bounds. Welcome to the distinguished domain of Sachin Gupta and Associates, where every space is a canvas for timeless elegance and impeccable craftsmanship. With an illustrious history spanning over 19 years, Sachin Gupta and Associates have emerged as a beacon of excellence, setting new standards in the industry.

Nestled in the heart of Mumbai, the dynamic team at Sachin Gupta and Associates has captivated the nation with their awe-inspiring designs. From the bustling streets of Delhi to the serene landscapes of Pune, from the cultural melting pot of Nanded to the tech-savvy ambiance of Bangalore, and from the historic charm of Bhilwara to every nook and cranny of this diverse land, they have built projects far and wide.

At the helm of Sachin Gupta and Associates stands the visionary designer himself, Sachin Gupta, whose passion for design fuels the creative engine of the firm. With a keen eye for detail and an unwavering commitment to excellence, Sachin Gupta leads his team in crafting spaces that are not just aesthetically pleasing but also functional and inviting.



Sachin Gupta receiving the award from Nari Hira, Shashi Prabhu, Hafeez Contractor and Ashok Dhamankar

Each project undertaken by Sachin Gupta and Associates is a testament to our dedication to perfection. From luxurious residences to upscale commercial spaces, every design endeavor is approached with creativity, ingenuity, and an acute understanding of our clients' needs and desires. Our bespoke solutions are tailored to exceed expectations, transforming visions into realities that leave a lasting impression.

What sets Sachin Gupta and Associates apart is our unwavering commitment to quality and our relentless pursuit of innovation. We believe that true luxury lies in the finer details, and it is this attention to detail that elevates our designs to unparalleled heights. From meticulously curated furnishings to exquisite finishes, every element is thoughtfully selected to create harmonious spaces that exude sophistication and refinement.

Join us on a journey where luxury knows no bounds. Experience the artistry of Sachin Gupta and Associates as we continue to push the boundaries of design, redefining what it means to live in elegance and style. From concept to completion, we invite you to embark on a transformative experience that will leave you inspired and enchanted. Sachin Gupta and Associates: Where luxury meets legacy, and dreams become reality.



The next honours was for the category - Architectural firm of the year (Residential, Commercial & Retail)

Sanjay Gediya from Design Zone - Architectural firm of the year (Residential, Commercial & Retail)

Design Zone is an Interior Design Service-oriented Company founded by Mr. Sanjay Gediya in 1999. Having an Expertise of over 20+ Years, the firm offers Bespoke & Contemporary Interior Design solutions.

They are a full-service design firm with a strong belief that designs should be completely bespoke. Design Zone specializes in high-end residential, commercial & institutional projects with an aim to bring out the best out of each individual space. They embrace the unique challenge of every project and bring each element of design together into a collective harmony that is inspired by the client's individual trait & functional needs. Their skillfulness in projects spans all styles, extending beyond our own personal vision & choice to reach our client's goal.

Design Zone is an Interior Design Service-oriented Company founded by Mr. Sanjay Gediya in 1999. Having an Expertise of over 20+ Years, the firm offers Bespoke & Contemporary Interior Design solutions.



Sanjay Gediya, Shashi Prabhu and Hafeez contractor

Design Zone aspires to convey the sense of passion they feel about their craft and their clients through their work each day. They hope to challenge and inspire generations of clients through design born of diversity, innovation, collaboration, laughter, and layers.

They exist to create the beautiful backdrops against which their clients experience their lives. They are honored by the trust clients impart to them to select the sofa on which emotional conversations will occur, a table on which a young artist will create many masterpieces, and a fabric which can evoke a specific memory 50 years later. Walls contain hope, joy, sadness, grief, and laughter; it is our privilege and our promise to design beautiful spaces within which to experience emotion and life.



The next honour was for the category – Interior Design of the Year

Ajay Mistry from Shreeji Interior Lifestyles - Interior Design of the Year

Shreeji Interior Lifestyles is formed by experienced professionals led by Mr Ajay Bhagwanji Mistry, the Founder & Owner of Shreeji Interior Lifestyles.

With over 25 plus years of experience, the firm approaches projects from Design point of view, and finishes them with their signature, soft-modern style. Shreeji Interiors, a full-service interior design firm is based in Mumbai. Shreeji Interiors is committed to design excellence, with responsibility and sustainability. Dedicated to the creation of custom interiors, the company prides itself on combining interiors and interior design to find unique and aesthetically pleasing solutions.



Ashok Dhamankar, Shashi Prabhu and Hafeez Contractor giving away the award to Ajay Mistry

Shreeji Interiors completes projects tailored to the individual styles and needs of its clients, on budget and on time. We make judicious use of space and provide it the most appealing look. Environmental aspects of the location is kept in mind while offering Interiors design services.

They approach objectively in all our projects to reflect the values and aspirations of the clients. They have been successfully designing and decorating residential houses, campus, apartments, offices, bungalows, farmhouses, commercial complexes and more.



The next category was for the Emerging Real Estate Developer. There were 5 honours in this category.

Jitendra Mehta - Legendary Leader of the Indian Real Estate Industry - Emerging Real Estate Developer

Jitendra Mehta is the Chairman and Managing Director of JVM Spaces. Fondly referred as JituBhai, he has successfully led Mega Housing and Finance exhibition, MCHI since the last 17 years as the Chairperson. A social celebrity, he leads the Ghatkopar Gujarati Samaj since 20 years as the President. Under his dynamic leadership, JVM Spaces believes in building spaces in terms of building homes with security that gives satisfaction financially and emotionally. He is a key person in MCHI Thane. He has been responsible in raising and solving the important issues that real estate industry faces.

“Owning a home is a keystone of wealth... both financial affluence and emotional security”- Suze Orman. The best ones in the real estate business have a knack for anticipating their clients’ needs and matching those needs with the right piece of real estate. When you put your clients’ interests first, you will succeed in building spaces and emotional security. That is exactly what we at JVM Spaces prepare ourselves for. JVM Spaces believes in building spaces in terms of building homes with security that gives satisfaction financially and emotionally. Their vision is to create value by providing innovative real estate solutions with maximum benefit to our clients and experience personal satisfaction in establishing a lifetime relationship with them” & To make “JVM Spaces” a landmark in the real estate domain.



Hafeez Contractor, Jitendra Mehta, Shashi Prabhu and Ashok Dhamankar



Raju Bhise from Austin Realty - Emerging Real Estate Developer

Born to a Farmer, Raju Bhise is a son of the soil whose connection with land, environment played catalysts in encouraging him to dream of becoming a developer and create an enterprise that would be ranked amongst the Best Emerging Real Estate Brand in Pune. His journey as the leader and Managing Director of Austin Realty has been an exceptional one where he has lead from the front working in realising iconic living spaces that reflect the individualistic requirements of the 21st- century homeowners. A testament of cutting-edge technology fused with age-old craftsmanship; helped him and his team at Austin create masterpieces where over 500+ families dwell in happiness and peace. A winner of numerous awards and accolades Raju Bhise is best poised to lead Austin Group to greater heights with a vision to be the custodians to the generation next.

Success and excellence, to him, are not just about achieving goals or reaching milestones. They embody a continuous journey of growth, improvement, and making a positive impact. It's about striving for the highest standards of quality, integrity and innovation in everything they do; while also fostering meaningful relationships and contributing to the greater good.

His greatest inspiration comes from the people around him, "us" — his team, colleagues, clients, and mentors — who continually challenge him to push beyond his limits and strive for greatness. Additionally, the opportunity to make a difference in the lives of others and leave a lasting legacy motivates him to keep moving forward, even in the face of adversity.



Ashok Dhamankar, Raju Bhise, Shashi Prabhu and Hafeez Contractor

Also, he firmly believes in the power of collaboration. He believes that the key to facing challenges lies in maintaining a positive mindset, staying adaptable, and embracing failure as a stepping stone to success. He believes in the power of resilience, perseverance, and continuous learning. By staying focused on solutions rather than problems and leveraging the strengths of his team, he is able to navigate through obstacles with confidence and determination.

Currently, his focus is on further expanding our brand's presence and influence in the real estate market, specifically in residential and commercial spaces, while also enhancing their service offerings

to better meet the evolving needs of our clients. He is committed to fostering a culture of innovation and excellence within their organisation, and he is excited about the opportunities that lie ahead as they continue to grow and succeed together.

His advice would be to stay true to your values, pursue your passions relentlessly, and never underestimate the power of hard work and perseverance. Surround yourself with people who inspire and support you, and never stop learning and growing. Remember that success is not always linear and that setbacks are a natural part of the journey. Stay focused on your goals, but remain open to new opportunities and experiences along the way.



Sahil Bipin Mehta - Most Admired Indian Real Estate Brand honours - Emerging Real Estate Developer

Vardhaman Group is setting the standard for opulence in both commercial and residential spaces. Their commitment to delivering the highest level of design and craftsmanship is reflected in every project they undertake. Mr. Sahil B. Mehta took forward this glorious legacy and has increased the expanse and horizons of the Vardhaman Group. He has nurtured the ethics and principles set by his father. With the belief of delivering the highest level of design and craftsmanship, Vardhaman Group helps clients to live their best life at a glimmering masterpiece that mirrors the inimitable endeavours of their architects, engineers and designers, belonging to global acclaim.

Under his able leadership, The Vardhaman Group has been a key player in the real estate industry, with a legacy spanning several decades. Established with a vision to redefine urban living, their journey has been marked by a commitment to quality, innovation, and customer satisfaction. Over the years, they have successfully delivered residential and commercial projects that reflect our ethos of excellence. The real estate sector is dynamic and ever-evolving. Adaptability and innovation are at the core of their strategy. They consistently invest in research and development to understand market trends, consumer preferences, and technological advancements. Their focus is not just on building structures but on creating sustainable, intelligent, and aesthetically pleasing spaces that meet the evolving needs of their customers. The groups flagship developments are a testament to their dedication to quality and innovation. These projects often integrate state-of-the-art amenities, cutting-edge architectural designs, and thoughtful urban planning. They aim to create not just buildings but vibrant communities that enhance the overall quality of life for residents.



Sahil Bipin Mehta receiving the award from Ashok Dhamankar, Nari Hira and Hafeez Contractor

Vardhaman Group prioritises transparency, open communication, and timely project delivery. Their customer-centric approach involves understanding the unique needs of each client and incorporating their feedback into their projects. Regular updates, post-sales services, and a commitment to quality craftsmanship contribute to the overall satisfaction of our clients. Their core vision is to continue setting new benchmarks for quality and innovation in the real estate sector. We anticipate an increased focus on smart and sustainable development, with advancements in technology playing a significant role. Vardhaman Group is prepared to embrace these changes, continuing to create spaces that not only meet but exceed the expectations of our customers. We look forward to continuing our journey of shaping the future of urban living and contributing positively to the real estate landscape.



Sagar Sukhwani from Sukhwani Associates - Emerging Real Estate Developer

Making up the core ethos of Sukhwani Associates are the for key elements of Trust, Quality, Innovation and Commitment. In every project, there's care towards what enhances lifestyle and efforts to bring something new to the Industry. It's a balance created with the trust of a legacy of 45+ years, the innovation of the 3rd generation into the business, the quality that's been consistent, and commitment to completion of every project undertaken well within time.

Excellence might sound like a tall claim but at Sukhwani Associates, it's a way of life. It's the guiding principle behind every creation. It always inspires us to excel beyond the limitations and lay benchmarks with every creation. It's a glorious legacy of adding class apart lifestyle and commercial spaces to Pune's breathtaking skyline. So be it fine homes or prime commercial spaces, you are dealing with the best to get the best in properties.



Sagar Sukhwani receiving the award from Ar. Noshir Talati, Ashok Dhamankar, Sandeep Maheshwari and Jitendra Mehta

#SIDCA2024



SOCIETY
**INTERIORS
&
DESIGN**

**COMPETITION
& AWARDS 2024**

21ST EDITION



The next honours was for the category Emerging Business Man Of The Year Award.

Karan Bothra from Trocko Logi Private Limited - Emerging Business Man of The Year Award

Karan Bothra has emerged as a shining star in the real estate industry, capturing everyone's attention with his extraordinary accomplishments and unparalleled sense of style. He is the Director at Plex Logitech Private Limited, Trocko Logi Private Limited and is associated with various companies. He was also bestowed the title of Most Stylish Entrepreneur at the Lokmat Most Stylish Awards, 2023. Through his unwavering dedication and innovative approach, Karan has established himself as a true trendsetter, transforming the landscape of the real estate world.

Success for him transcends mere financial gains, embracing personal fulfilment through aligning actions with values and passions. It's a journey of self-discovery, resilience, and growth amid challenges. Moreover, success intertwines with social recognition, driven by meaningful contributions to society through profession, community or advocacy. Social acknowledgment fosters belonging and respect. Excellence embodies the relentless pursuit of mastery and refinement across skills and knowledge domains. It's about upholding the highest standards of quality, innovation and creativity, viewing challenges as opportunities for growth. Success and excellence converge to form a rich tapestry of personal, professional and social impact, reflecting the multifaceted nature of human endeavour.



Ashok Dhamankar, Nari Hira, Karan Bothra and Hafeez Contractor

His unwavering self-assurance propels him forward, fueling his relentless pursuit of goals. He is inherently driven by a strong sense of purpose, persisting until he realised his ambitions. Being inherently goal-oriented, he is driven by the desire to turn aspirations into tangible achievements. This steadfast commitment to excellence shapes his journey, compelling him to push boundaries and surpass limitations. Thus, anchored in self-belief and driven by a relentless pursuit of success, he remains resolute in his quest for personal and professional fulfilment.

His approach to challenges is rooted in the belief that they are the very essence of life's journey. He believes Challenges propel us forward, infusing vitality into our existence. Embracing each obstacle as a gateway to fresh insights and growth, he views them as invaluable opportunities for learning and self-discovery. Without challenges, life would lack depth and meaning. Thus, he welcomes challenges with open arms, recognising them as essential catalysts for personal and intellectual evolution. This mind-set empowers him to confront adversity with resilience and optimism, extracting wisdom from every experience along the way.

At the forefront of his life's itinerary lies the ambition to expand his business onto the international stage.



**Raymond Realty -
Operational Excellence &
Innovation - Residential
Projects - Emerging Real
Estate Developer**

Raymond Realty, the real estate division of the esteemed Raymond Group, embarked on its inaugural project in Thane, followed by the unveiling of 'The Address by GS, Bandra.' Spanning 2.74 acres, this gated community in Bandra East. Inspired by Portuguese architecture, the project features amenities and towers that blend modern comforts with timeless design aesthetics, promising a truly distinctive living experience. While nestled in the heart of Thane, the Clubhouse at Ten X Habitat redefines residential amenities with its innovative design. Part of a 14-acre high-rise residential development catering to approximately 1300 households, this clubhouse breaks away from the conventional 'towers atop podium' approach. Situated amidst ten towers, it is surrounded by 5 acres of central recreational open space on one side, flanked by five towers on both ends, with a nine-story parking building serving as a backdrop on the fourth side. This unique layout offers residents a refreshing oasis within the bustling cityscape, setting a new benchmark for residential living





The next honor was for the category Exemplary Contribution to Healthcare & Covid Pandemic Relief

Dr Gautam Bhansali, Consultant Physician at Bombay Hospital - Exemplary Contribution to Healthcare & Covid Pandemic Relief

Having worked at the forefront of Covid control in India, Dr Gautam Bhansali, is the Consultant Physician and Intensivist at Bombay Hospital and the Chief Coordinator for all Private Hospitals and Nursing Homes in Mumbai.

Dr Gautam Bhansali was at the forefront of Covid control in India. Along with the Municipal Corporation, he worked on policy implementation during the pandemic.



Ashok Dhamankar , Jitendra Mehta, Dr Gautam Bhansali, Sandeep Maheshwari and Noshir Talati

The next honour was for the category Youth Icon

Arham Bhansali - Youth Icon

Arham Bhansali, a grade 11 student from Dhirubhai Ambani International School (DAIS), Mumbai, has a great passion for earth and environmental sciences. Having written two research papers in the field of earth and climate sciences, he has deep interest and knowledge in this field. As such, he has formed his organisation, Yuva Maitri Organisation, along with students from other cities and countries, with the mission to solve youth-related concerns



Ashok Dhamankar, Arham Bhansali, Sandeep Maheshwari, Ar, Noshir Talati and Jitendra Mehta

Launchpad

About Mr. Ranjeet Sharma , President & CEO of 3A Composites India

Ranjeet Sharma, a veteran of the building and construction industry, assumed the role of President & CEO of 3A Composites India in January 2023. ALUCOBOND stands as the flagship brand of this globally recognized leader in aluminum composite material, renowned for its innovation and quality. With nearly two decades of establishment in India, the company has spearheaded market development towards heightened awareness of quality and reliability.

Before joining 3A Composites, Ranjeet served as the Director of Sales India for MBCC (Master Builders Construction Chemicals), formerly known as BASF Construction Chemicals, a prominent supplier of admixtures and construction systems worldwide. He was instrumental in the country management team's strategic initiatives, leading to market leadership across key customer segments. Prior to that, he held the position of Director of Sales for India and South east Asia at Honeywell Building Solutions, a division of Honeywell Automation India Ltd. In this capacity, he played a pivotal role in driving profitable sales growth across major verticals and customer segments, leveraging his expertise in deploying digital technologies such as AI-ML & IoT in industry applications. Preceding his tenure at Honeywell, he served as the Head of Sales & Marketing for the Service business at Schindler India, where he initiated their digital transformation journey with IoT-based Remote Monitoring technology for elevators & escalators.



Ashok Dhamankar, Shashi Prabhu, Ranjeet Sharma and Hafeez Contractor

Ranjeet brings to the table over two decades of experience gained from diverse organizations, all within the building, construction, and automation sectors. He has held positions of increasing responsibility and scope in both national and international operations at Schindler India, Kohler India and Essar Steel. His expertise encompasses strategic sales & marketing, domain knowledge, key account management, and general management, including leading a Strategic Business Unit. His regional roles in Asia Pacific & Middle East, coupled with experience in matrixed structures of multinational corporations, have provided him with valuable international exposure in understanding various cultures, strategies, and the dynamics between globally standardized solutions and local offerings, as well as Go-To-Market strategies.

Beyond his professional endeavors, Ranjeet's interests lie in automobiles, cutting-edge technology, mentoring, and fitness.

Ranjeet holds a B.E. in Mechanical Engineering from Agra University and an M.B.A. in Marketing from KJ Somaiya Institute of Management, Mumbai.

About ALUCODUAL

ALUCODUAL is a pre-coated engineered solid sheet comprising two-three layers of laminated aluminium skins. This ensures perfect flatness, which is challenging to achieve with standard post coated solid sheets. The product undergoes a multi-coat, multi-bake process on a continuous industrial-grade coil coating line, utilizing the highest grade of fluorocarbon based PVDF/FEVE paint system as per AAMA 2605 superior performance specification for exterior to ensure longterm performance and durability. In comparison to a single sheet of aluminum of the same thickness, ALUCODUAL panels offer enhanced stiffness and rigidity. This structural stability allows for their use in larger cassettes and panels, effectively reducing number of joints and overall costs. Additionally, the material's workability in achieving 3D shapes and complex geometric patterns makes it highly versatile for various architectural applications. One of the key features of ALUCODUAL is its fire-retardant property. Since it doesn't have a thermo-plastic core, it remains inactive in the event of a fire, emitting no toxic gases or burning droplets. It is classified as Class A2-s1, d0 according to EN 13501-1 test standard, making it suitable for projects with stringent fire safety requirements. ALUCODUAL is used for facades, wall cladding, soffits, column cladding and decorative interior walls in various projects like airports, stadiums, malls and residential buildings. It fulfills fire safety needs while providing flexibility, making it a reliable choice for architects and designers to create visually appealing facades.



Team ALUCOBOND - Prashant Patro, Head- Plant operations. Amit Suman, Product Manager. Shailesh Pandit, Regional Sales Manager - West. Akash Deep, Manager - Commercial Excellence. Ranjeet Sharma, President and CEO. Amit Chougule, National Sales Manager - Retail & CID. Trupti More, Assistant Manager - Marketing. Amar Kirale, Head Marketing.

Revolutionary Solution

ALUCODUAL: Revolutionizing Architectural Possibilities in India with Unmatched Innovation



Ranjeet Sharma

3A Composites India, renowned manufacturers of ALUCOBOND, has unveiled their latest innovation - ALUCODUAL, pre-coated engineered solid sheet poised to redefine the landscape of façade cladding materials across India. With its unparalleled features and impeccable quality, ALUCODUAL represents a significant leap forward in architectural excellence and sustainability.

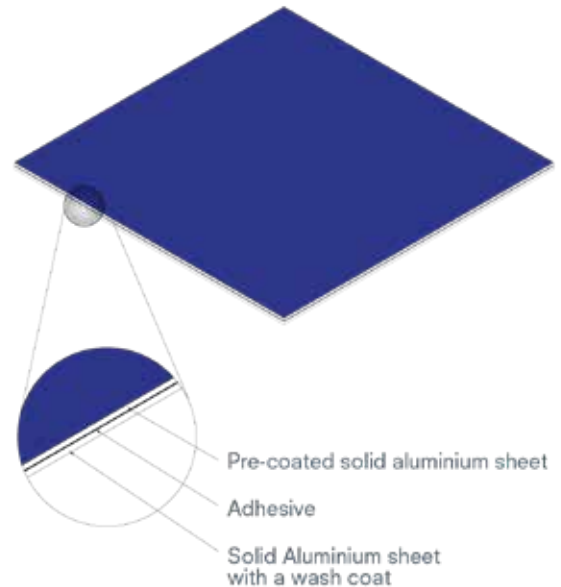
ALUCODUAL stands as a testament to ingenuity, offering architects, facade consultants, and developers a game-changing solution that combines cutting-

edge technology with uncompromising performance. Being and pre-coated engineered solid sheet, ALUCODUAL has no thermoplastic core, ensuring unmatched fire safety with its A2-s1, d0 Classification as per EN 3501-1 standards.

What distinguishes ALUCODUAL from traditional post coated solid sheets is its flawless flatness, a long-sought-after characteristic in construction materials. This, paired with enhanced stiffness and rigidity, empowers designers to explore larger cassettes and panels, thereby reducing joint counts and overall costs. Moreover, its versatility extends to its ability to achieve intricate 3D shapes and complex geometric patterns, opening doors to limitless design possibilities.

ALUCODUAL undergoes a multi-coat, multi-bake process on a continuous industrial grade coil coating line, utilizing the highest grade of fluorocarbon-based PVDF/FEVE paint system. This ensures enduring resilience against harsh environmental elements, meeting and exceeding the rigorous AAMA 2605 specification for exterior applications.

ALUCODUAL is not merely a product; it embodies a commitment to excellence and innovation. From the manufacturers of ALUCOBOND, ALUCODUAL ensures unmatched quality and reliability. Proudly made in India, it perfectly aligns with Prime Minister Modi's Make in India initiative, reflecting the nation's prowess in manufacturing excellence.





Available in a wide variety of colors and finishes, including metallic, solid, wood, stone, and concrete patterns, ALUCODUAL offers designers unprecedented freedom to bring their visions to life. Its corrosion-resistant 5005 marine-grade alloy ensures long-term performance, while its 100% recyclable material contributes to sustainability efforts.

Ranjeet Sharma, President and CEO of 3A Composites India, remarked, "ALUCODUAL isn't just a product; it's a statement of our unwavering commitment to excellence and innovation. We're not just launching a product; we're introducing a revolution in construction materials."

ALUCODUAL represents a paradigm shift in the architectural landscape of India, empowering designers to push boundaries and redefine what's possible in construction materials.

Before the student felicitations could start, Society Interiors & Design, took a moment to honour the mentors and jury members of Society Interiors Design Competition & Awards 2024, appreciating their support and efforts in making the student competition a huge success.

Sandeep Kothari from STED Architecture & Design, was felicitated for mentoring the residential category

Sandeep Kothari, completed his curriculum of architecture in the year 1999 from University of Mumbai. He has been passionate towards sketching, imagining with creative thoughts right from his childhood. This led him in to taking up a career that could lend him an opportunity towards design and creation of his own design. It has been almost 25 years since he has been doing this wonderful work and able to serve society through his ideas, insights and innovative approach to design. He feels privileged towards this responsibility of serving and improvising lives of several communities. His firm STED offer a comprehensive range of strategies and solutions, that come under the broad spectrum of Services – categorized as Design Consultancy, Project Management and Design + Build. Today have a dynamic portfolio and they work across various verticals within Architecture & Interior Design domains like master planning, mixed-use developments, high density residential, corporate & commercial spaces, hospitality, industrial, retail and education.



Sunil Khavnekar and Shivendra Parihar felicitating Sandeep Kothari

Dipak Thaker from INTERARCH & DID CONSULTANTS was felicitated for mentoring the commercial category

Architect Dipak Thaker specialty lies in creating aesthetically pleasing and immaculately planned spaces with an eye for detail. In the year 1989 he established his twin firms INTERARCH & DID CONSULTANTS backed by experienced architects and designers, with today's strength of 40 people. While DID CONSULTANTS has a range of skilled personnel suited for architectural and master planning purpose, INTERARCH is well equipped with a team of imaginative and inspired individuals who focus on interior designing.

Architect Dipak Thaker's designs range from new-classical to modern and contemporary. His palette of work covers everything from town-planning schemes, institutional and mixed-use establishments, retail outlets, factories and R&D centres, auditoriums, cultural projects, museums, commercial spaces for major corporate houses, individual offices, bungalow schemes, high-end bungalows and residential complexes and individual residences. His portfolio boasts of architectural and interior projects shaped by the virtue of purpose and oriented towards excellence in planning, design, aesthetics and quality finishing.



Team INTERARCH & DID CONSULTANTS

Kanika Bawa from Kanika Bawa Design was felicitated for mentoring the Product Design Segment

In her 20-year career, multi-talented Kanika Bawa—three-time Limca Book World Record holder, Creative Genius Award winner for four straight years starting in 2013, and clientele that includes Bollywood celebrities and businessmen—has used her skills to conceptualise and design spaces as varied as residential, industrial, exhibitions, retail, hospitality, and commercial. She is also doing Set Design for Jio Creative for Season 3 *too.

Manjunath Hathwar from Space Dynamix was felicitated for being the jury for the commercial design segment

Space Dynamix is an award-winning Design practice based in Mumbai, that believes in not only meeting Client expectations but exceeding them while creating bespoke timeless designs

Kedar Naik from The Turtle Story & Mr Parth Parikh from Design Clinic India were felicitated for being the jury members for Product Design Segment.

Kedar Naik --- Kedar is a design thinker with a heart of an artist and the head of a strategist. With over two decades of diverse corporate experience, he has established himself as a renowned multi-disciplinary business consultant, specializing in design and branding.

Parth Parikh --- At the heart of Design Clinic India is the visionary product designer, Parth Parikh. Parth believes that a home devoid of color lacks vibrancy.



Kanika Bawa being felicitated by Sunil Khavnekar and Shivendra Parihar

The student's awards segment, the real heroes of the evening were the amazing competitors who blew the jury away with unique ideas and approaches. Taking home top honours in the Residential Zonal Category were Kriti Mahajan, Diksha Nijhawan, Abhishek choudhary and Rimpya maurya from Manav Rachna Internataional Institute of Research & Studies, Faridabad, Haryana from the north zone, Abhinaya Ramadorai, Anirudh Venugopalan Desikan, Adhiran AVK, Tayyibah Batool from MEASI Academy Of Architecture, Chennai, Tamil Nadu, from the South Zone, Ishika Khaitan, Pari Agarwal, Ayushi Sureka, Anjali Shaw from J.D. Birla Institute, Kolkata and Hirak Karmakar, Twinkle Saha, Susmita Samanta, Subhra Sil from Perfect Institute Of Interior Design, Kolkata from the East Zone and Bhakti Jangla, Shrushti Barvadia, Sharmin Syed, Manav Rathod – NAFDI, Mumbai from the West Zone



EMCEE Pooja Kanwal

Taking home top honours in the Commercial Zonal category were PRANJAL JAIN, PARIDHI BAJAJ, MUSKAN AGRAWAL, DHIYA CHHAJED from INIFD, INDORE and DEEPIKA Bhargava , NEHA Maurya, SAGUN Upadhyay, SAYEMA Shaikh from Manav Rachna International Institute of Research and Studies, Faridabad, Haryana from the North Zone, MITHALI JAIN, BHAVANA DEVI, MANSI JAIN, VANSHIKA SHANKALA from INIFD-HIMAYATNAGAR, HYDERABAD, from the South Zone, TUSHAR CHAKRABORTY , AKASH SAMANTA , SAJAL NASKAR , VIKRAM PATEL from PERFECT INSTITUTE OF INTERIOR DESIGN, Kolkata, and Eshaa Himmatsinghka, Aditi Choudhary, Dsiha Agarwal and Tasneem Kagalwala from JD. BIRLA INSTITUTE, KOLKATA, from the east zone



Sunil Khavnekar and Karan Bothra felicitating students

Taking home top honours in the Product Zonal category were AADITHY. A and MOHAMMED AAFTAB and Santhosh Venogopal , Arsheen Faaiqa Refai from Measi academy of architecture, Chennai, Tamil Nadu, from the South Zone, Kameshwari Suthar, Punkhuri Walia, Sanskriti Jaiswal and Anushka Roy from J.D Birla Institute, Kolkata and TANAYA PAL and CHAITALI RAY from Perfect Institute Kolkata, Kolkata, from the east zone and Sanika Ghosh and JAYESH BHALA MERIYA from L.S. RAHEJA SCHOOL OF ARCHITECTURE, Mumbai and Granth Patel, Om Katre, Harshvardhan Patil and Payoja Ghalwadkar from KALAPRABODHINI'S INSTITUTE OF DESIGN, Kolhapur, from the west zone.



Sunil Khavnekar and Karan Bothra felicitating students



Sunil Khavnekar and Karan Bothra felicitating students



Sagar Sukhwani, Karan Bothra felicitating students



Sunil Khavnekar, Mujib Ahmed and Lalita Tharani, Mrs Patil felicitating students



Sunil Khavnekar, Mujib Ahmed and Lalita Tharani, Mrs Patil felicitating students



Sunil Khavnekar, Ranjeet Sharma, Ajay and Prasad Badle felicitating students



Sunil Khavnekar, Ranjeet Sharma, Ajay and Prasad Badle felicitating students



Kavita Talib and Prashant Sutaria felicitating students



Sunil Khavnekar, Kavita Talib and Prashant Sutaria felicitating students



In the residential design category, All India winners, Dishika Soni & Disha Mor from INIFD, HIMAYATNAGAR, HYDERABAD, emerged as the first winners. Shubham Kapileshwari, Hiya Jain, Dev Dhariwal, Dhruvi Shah from Rachana Sansad School Of Interior Design, Mumbai, won the second prize while Sherwin Dcosta, Aastha Shori, Tamanna Datta, Varshita Kodavati - AVANTIKA UNIVERSITY, Lekoda, Madhya Pradesh won the third prize.

Moving to the All India Winners for the commercial design category, there was a tie for the first prize. SALONI SAMDADIYA, DHRITI JAIN, VANSHIKA SHAH, SANSKRUTI BADJATIA from RACHANA SANSAD- B.Voc, Mumbai. (ID) and Ahsaan Rehman, Hemant Gupta, Sumehra Siddiqui, Chandni Bhanushali from NAFDI - School of Interior Design, Mumbai won the first prize, while Janhavi Palande, Dhrutee Adenkar, Palak Sanga & Janhavi Mungekar from L.S Raheja school Of Architecture, Mumbai, emerged as the second winners. The commercial category also witnessed Special Commendation for Two collages namely INIFD - Himayatnagar, Hyderabad and INIFD, Indore. The special commendation awards were presented to Sakshi Soni, Trupthi Jhavar, Tisha mundada & Arpita dhoot from INIFD - Himayatnagar, Hyderabad and Sanskar Singhal, Manshreet kaur, Avani goyal & Bhumika singhal from INIFD, Indore.



Sunil Khavnekar, Kavita Talib and Prashant Sutaria felicitating students



Sunil Khavnekar, Neilesh and Bhavya Kenkare felicitating students



Sunil Khavnekar, Neilesh and Bhavya Kenkare felicitating students



Sunil Khavnekar, Neilesh and Bhavya Kenkare felicitating students



Sunil Khavnekar and Gautam Naik felicitating students



Sunil Khavnekar and Gautam Naik felicitating students



Sunil Khavnekar and Gautam Naik felicitating students



Sunil Khavnekar and Gautam Naik felicitating students



Sunil Khavnekar and Kanika Bawa felicitating the students



Rajiv Trehan, Sunil Khavnekar and Kanika Bawa felicitating the students



Sunil Khavnekar, Rajiv Trehan and Kanika Bawa felicitating the students



Sunil Khavnekar, Prasanna Ghag, Rajiv Trehan and Kanika Bawa felicitating the students



Kanika Bawa, Prasanna Ghag and Rajiv Trehan felicitating the students



Ketan Sheth, Milind Pai and Alhad Gore felicitating the students



In the product design category, All India winners, Hanseka Amitt and J Marian Laura Noel from Measi academy of architecture, Chennai, Tamil Nadu won the first prize, Arshina Bano Ansari & Srishti Kaushik from Meerabai dseu Maharani bagh campus Delhi won the second prize, while Abdullah Siddiqui and Shruti Ghag from L.S RAHEJA SCHOOL OF ARCHITECTURE, Mumbai, won the third prize.

This category too witnessed Special Commendation for Two collages namely, INIFD, Himayat Nagar, Hyderabad and College Of Home Science Nirmala Niketan, Mumbai. The special commendation awards were presented to J Shreya Jain, G Saloni Gandhi from INIFD, Himayat Nagar, Hyderabad and Rohan Sharma and Rabab Shad from College Of Home Science Nirmala Niketan, Mumbai.

The final segment of the Society Interiors & Design Competition & Awards was the budding design talent. This category was introduced to promote the burgeoning talent in our country. The participants were given a choice of three categories – Residential, Commercial and Hospitality design. This year witnessed three winning entries. There was a tie for the first prize. Boddhayan Chakraborty from Raise Atelier won the first prize for the Commercial Category, while IMTHIAZ AHMMED.K from INGRID ARCHITECTS won the first prize for residential category, while Priyanka Gupta from PRODIGY DESIGNS won the second prize for the residential category.

With plenty of cheers, celebrations and of course posing for the cameras with hard-earned awards, the Society Interiors Design Competition & Awards 2024 wrapped up on a high note and is all set to recognize the next budding set of bold and bright competitors.

Society Interiors & Design would like to thank ALUCOBOND and Maharashtra State Road Development Corporation (MSRDC). The magazine extends its special thanks to Bright Outdoor, their Outdoor Advertising partner for their support and Envisage Events for event production and last but not the least Taj Santacruz for their wonderful hospitality.



Ketan Sheth, Milind Pai and Alhad Gore felicitating the students



Ketan Sheth, Milind Pai and Alhad Gore felicitating Budding professionals



Ketan Sheth, Milind Pai and Alhad Gore felicitating the students



Ketan Sheth, Milind Pai and Alhad Gore felicitating Budding professionals



Ketan Sheth, Milind Pai and Alhad Gore felicitating Budding professionals

Miscellaneous

Tanks with Enhanced Protection & Longevity

One-of-its-kind product Supreme Industries is pleased to introduce a groundbreaking addition to their range, the all-new 'CopperShield' water tanks with an inner copper layer. Supreme CopperShield tanks feature an advanced inner copper layer that shields bacteria, viruses, fungi, and algae and provides complete protection to the stored water. Besides consistently maintaining the water quality these tanks keeps the water fresh, clean and safe for a prolonged period. CopperShield tanks are offered in 500, 750 and 1000 ltrs capacities in a distinct Tan Copper colour and are available in four-layer design. CopperShield tanks offer a range of key features like are strong and Sturdy, are Comprehensive with Anti-microbial Protection, come with a Double Wall Cover, an Excellent Water Storage Solution and are All Weather-Resistant

www.supreme.co.in



Nature-Inspired Wood-Finish Series

Godrej Appliances, part of Godrej & Boyce, flagship company of the Godrej Group, has launched Eon Vogue, a new series of nature-inspired wood-finish home appliances. The range, comprising advanced Refrigerators and Air Conditioners, offers a unique blend of aesthetics and technology that complements contemporary Indian home décor and lifts it many notches. True to Godrej Appliances' philosophy of things made thoughtfully, the brand has once again innovated to plug this need gap with its unique one of its kind offering of Nature Inspired, Wood Finish range of Air Conditioners and Refrigerators – The Godrej Eon Vogue Series. The range takes inspiration from nature, and comes up with natural wood finish appliances in multiple shades, to blend and complement homes, while keeping the practicality intact. The Eon Vogue series are water, stain, and scratch resistant, easy to clean, and durable. To further aid consumers in experiencing and adopting the design transformation in their homes, the brand has collaborated with Krsnaa Mehta, Founder and Design Director of India Circus for a customized home design guide, showcasing the new Eon Vogue series in different home décor styles and specially curated nature inspired India Circus accessories worth upto Rs.1999/- for the first one thousand customers.

www.godrej.com/appliances/eonvogue

Blum Launches Sliker India in Jodhpur

Blum, a premium Austrian furniture fittings manufacturer, launched its new distributor showroom, "Sliker India" in Jodhpur. Located at the Opp Dalda Building, 7th Chopasni Road, Jodhpur, Rajasthan 342001, consumers can buy products directly from the brand's authorized distributor. This new Blum experience centre was inaugurated by Nadeem Patni, Managing Director, Blum India, and Sultan Ahmed, Director of Sliker India. The showroom offers a range of Blum products and complete kitchen & wardrobe solutions. The idea is to give customers greater design scope and plenty of possibilities for differentiation.

www.blum.com/in/en



Hindware Unveils 'Lacasa' Experience Centre in Lucknow

Hindware Limited, a leading bathware company, celebrated a significant achievement with the grand opening of its 'Lacasa' Experience Centre in Lucknow, Uttar Pradesh. The store inauguration was led by Mr. Sudhanshu Pokhriyal, CEO - Bath & Tiles Business, alongside Mr. Vriddhesh Jain, Vice President - Institutional Sales at Hindware Limited. Spanning across a spacious 2,600 sq. ft., the centre strategically located within Alpha Tower at Kamta Chauraha, Faizabad Road, showcases an extensive array of sanitaryware, faucets, wellness products, and shower enclosures. The showroom offers an immersive experience of all its brands, including Queo - the luxury line, Hindware Italian Collection - the premium range, and Hindware - the iconic brand. Lacasa acts as a prime inspiration hub for architects, interior designers, and end-customers exploring exclusive bathroom designs. The team of bathroom and design experts skilfully navigate customers through their dream bathroom design journey, offering personalized guidance to ensure informed decisions aligned with their distinct needs and preferences.



www.hindware.com/who-we-are

The Great Eastern Home's Tableware Collection

Immerse yourself in the world of fine dining with The Great Eastern Home's latest Tableware collection. This thoughtfully curated collection comprises an impressive range of glassware, crockery, tea sets, and cutlery, showcasing a captivating blend of exquisite craftsmanship and enduring elegance. Among the highlights of this extraordinary collection are the Benjarong tableware and White tea sets, each very special in their own right. Originally reserved for Thai royalty, the golden Benjarong enameled porcelain, crafted exclusively for The Great Eastern Home in Mumbai, features meticulous designs on selected white porcelain. The White tea set, with its dreamy contrast of jewel-black checks against a stunning white backdrop, invites you to join a tea party haven. These carefully curated designs not only stand out in warm lighting but also reveal a symphony of forms that seamlessly integrate into diverse settings, embodying the perfect balance of heritage and modernity. Each meticulously crafted piece in The Great Eastern Home's Tableware collection is a testament to their unwavering commitment to showcasing the pinnacle of design.

www.thegreateasternhome.com



Check Out Jardin's Nature-Inspired Furniture

Home Canvas, a leading innovator in contemporary furniture design, proudly announces the launch of its latest collection - Jardin. Inspired by the captivating essence of the natural world, Jardin offers a unique range of seating options that seamlessly blend comfort with artistic expression. This collection transcends the boundaries of conventional furniture, transforming each piece into a sculptural element that sparks conversation and elevates any living space. The Jardin collection boasts a diverse selection of seating options, each meticulously crafted to embody the essence of its namesake. Embrace the outdoors with the Eden Bench's exquisite, curved shape that seamlessly blends with nature. This weather-resistant haven, crafted from high-quality FRP (Fiber-Reinforced Plastic), offers a tranquil spot for relaxation or a charming space for gatherings. The Daisy Stool bursts with a vibrant personality, flourishing outdoors in a spectrum of pastel colors. Inspired by nature's beauty, the Pebble Seater brings a touch of organic elegance to your outdoor space. This unique seat, resembling a smooth pebble, is meticulously crafted for comfort and durability using weather-resistant FRP. Elevate your outdoor space with the Fern bench, a masterpiece of modern design crafted from high-quality FRP. Defy convention with the Bloom, a striking and inviting piece crafted from durable FRP. The Jardin collection exemplifies Home Canvas' dedication to using high-quality, eco-friendly materials. Each piece is meticulously crafted with wood and hand-spun materials, offering a sense of warmth and a connection to the natural world.



www.homecanvas.com

Lifestyle

Bespoke Indulgence

Founded by the visionary Jatin Kapoor, Mira Living by Mantra One serves as an ode to the notion that home is more than just a physical space; it reflects one's identity. With an expertly curated assortment spanning cushions, vases, lamps, sculptures, wall art, accent furniture, and beyond, the brand encapsulates sophistication, providing exclusive solutions crafted to enhance every facet of home living. Bringing the latest collections from across the globe, Mira Living aims to underscore its commitment to manifesting exemplary design. From the sleek lines of its designs to the sophisticated colour palettes, every aspect of the brand resonates with discerning homeowners while its modern, nuanced, and sumptuous tone evokes comfort and beauty in every home it graces. Whether it's a statement piece to anchor a room or a subtle accent to infuse an air of elegance, the brand caters to every preference and aesthetic. It beckons you to indulge in opulence and redefine your experience of home decor.

www.instagram.com/miraliving.one



Vibrant Plates

VitrA, has launched the VitrA Root Flush Plates, marking the introduction of a new flush plate series. Redefining bathroom aesthetics, the Root Flush Plates boast a modern and streamlined design, featuring larger buttons for enhanced ergonomics. This extensive color palette perfectly complements VitrA armatures, allowing customers to personalize their bathroom spaces like never before. Designed to seamlessly integrate with VitrA concealed cisterns, the Root Flush Plates ensure a swift and convenient installation process with their user-friendly assembly feature. These flush plates are not only durable but also come with a reassuring 5-year warranty. These are available in two sophisticated shapes: Root Round and Root Square. Moreover, the color range is extensive, featuring classic choices such as white and chrome, as well as contemporary selections like matt black, glossy black, soft copper, soft gold, brushed nickel, and brushed gold.

www.vitra-india.com



Chinoiserie Wallpaper Collection

Strrot, a top-tier name in luxury furniture and lifestyle based in Delhi, has teamed up with Seletti, a renowned Italian design brand, to bring a fresh wave of design excellence. What sets this alliance apart is the exclusive offering – Strrot stands as the sole purveyor of Seletti's exquisite collections in India, an unprecedented opportunity for discerning connoisseurs to immerse themselves in Italian design excellence, available nowhere else in the country. From whimsical collections for 'Toiletpaper' to iconic collaborations with visionary designers, the brand has carved a niche for itself as a purveyor of quirky, yet functional, objects. Among its signature pieces, the Rio Lamp stands out—a whimsical representation of Seletti's commitment to storytelling and creativity. Crafted in collaboration with Marcantonio, this lamp embodies the spirit of adventure, featuring Seletti's beloved family dog, Rio, as a trusted companion in the exploration of design places and showrooms. The Peacock Lamp and Monkey Lamps on the other hand, with their playful antics and endearing charm, bring a sense of whimsy and wonder to any setting. These signature pieces imbued with Seletti's trademark creativity and craftsmanship, serve as chic focal points in the tapestry of interior design, capturing the imagination and inspiring awe.

www.instagram.com/strrotoofficial

Hello Spring

Life n Colors brings to you a beautiful infusion of the traditional and contemporary elements of Chinoiserie, a European interpretation of Chinese artistic motifs through an extensive range of wallpapers in its Spring Collection. Whether through delicate patterns or bold statement pieces, the brand takes this beloved aesthetic and seamlessly blends its Eastern allure with Western sensibilities to bring alive the essence of spring with captivating floral and bird motifs. Each design in the Chinoiserie Collection tells a story, inviting you to immerse yourself in a world of grace and sophistication. From Phoolbagh - a beautiful mauve color Chinoiserie to Bagiya - a stunning Peacock Chinoiserie Wallpaper with delicate cherry blossoms, every element is meticulously crafted to bring a touch of opulence to your living space.

www.lifencolors.in



Mixx Doors' Luxury Glass Collection

Mixx Doors, the epitome of luxury craftsmanship, unveils an extraordinary collection of Luxury Glass Doors, setting a new standard for sophistication and style in interior design. Each door in this exquisite lineup is a fusion of innovation and elegance, meticulously crafted to redefine the ambience of any space. Mixx Doors' Luxury Glass Doors transcend the ordinary, transforming mere doorways into artistic statements. The collection boasts a symphony of design elements, from the ethereal beauty of frosted glass to the sleek transparency of clear glass, offering a spectrum of options to suit every aesthetic preference. These doors are not just entrances; they are experiences, seamlessly blending into any architectural style while adding a touch of modern sophistication. The frosted glass doors exude a sense of privacy and tranquillity, perfect for intimate settings such as bedrooms or private offices. On the other hand, the clear glass doors create an illusion of space and openness, ideal for areas where natural light and a sense of airiness are desired.

www.mixxdoors.com



Beautiful Luminaries

To add a touch of flair and elegance to the living places, Ledure Lightings Limited, has launched a line of Architectural Lighting solutions that will illuminate your surroundings with the ideal balance of elegance. A collection of LED lights under the Architectural Lighting solutions, include, Arcade COB Series of retractable lights provide bright illumination, efficient and dependable lighting due to its user-friendly design and outstanding output. Arcade COB offers an attractive appearance, changeable focus capabilities, simple pull and push adjustments, anti-glare design, rotatable, recessed light, and energy efficiency. Neo Magnetic Track Series are revolutionary lighting fixtures with magnetic bases for easy installation on metal surfaces, allowing for precise light direction along the track, making them ideal for emphasizing specific areas or creating adaptive lighting setups. Cube Surface COB Series are available in single and double LED configurations, offering contemporary and efficient lighting solutions for a variety of applications. Their sleek, flat designs complement contemporary styles while providing enough lighting coverage, while the Air Surface COB Series has a cylindrical form with Chip-on-Board LED technology, which provides intense and focused lighting. These directional lights may highlight certain areas or objects while reducing glare.

www.ledure.com

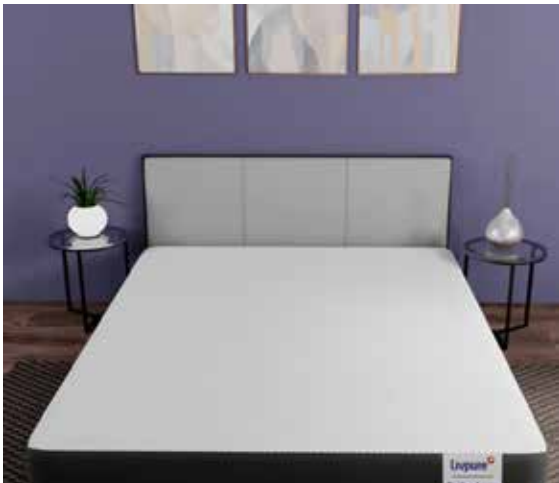


Furnishings

Asymmetrical Beauties

Pequra, renowned for its luxurious carpet creations, is set to unveil its groundbreaking collection of asymmetrical carpets. Step into a world of artistic rebellion where each rug is a unique masterpiece, meticulously hand-knotted by skilled artisans. The carpets weave a narrative of organic curves and unexpected angles, defying traditional norms of aesthetics. These asymmetrical carpets transcend mere functionality to become statement pieces for modern spaces. Picture cascading layers of plush wool in contrasting tones or vibrant silk threads arranged in dynamic compositions. Each element is carefully placed to create a harmonious yet unconventional whole, transforming rooms into conversation starters that reflect the personalities of their owners.

www.pequra.com



Premium Mattresses

Livpure Mattresses launches the Ortho CurvX Mattress, a revolutionary 6-inch mattress meticulously designed to deliver unparalleled orthopedic support and comfort. Powered by RecoverXTM Technology, this mattress actively aids your body's recovery process as you rest. Crafted using Dow ComfortScience™ Technology, the mattress ensures superior airflow, keeping it cool and comfortable throughout the night. Embedded within its foam layer, Biocrystals, a harmonious fusion of 16 healing crystals, promotes deep and restful sleep. Experience the epitome of luxury and comfort with Livpure's Jeeva Natural Mattress, a natural and non-toxic mattress that prioritizes your well-being. Featuring a 1-inch layer of 100% natural latex on the top and bottom, this mattress ensures a plush and comfortable surface for a restful sleep. The 4-inch plant oil-based foam, infused with citrus essence, provides superior support and durability. This mattress is breathable and temperature-neutral. Powered by the healing nature of Biocrystals, this mattress promotes deep and rejuvenating sleep.

www.livpure.com/collections/mattress

Velvet Wonder

Add a Touch of Elegance to Your Home as India Circus by Krsna Mehta Introduces its Velvet Cushion Covers. The Kaleidoscope Treasures Velvet Cushion Cover is an exquisite piece of inscrutable magic for your home. Crafted from velvet, this cushion cover provides unparalleled comfort and luxury while reflecting a contemporary design aesthetic. Its ellipse framework pattern will lend any room magnificent grandeur and seductive chic in an instant. Mystifying Dazzle Velvet Cushion Cover features a luxurious velvet surface. Handcrafted with precise attention to detail, this beautiful piece will create an air of baffling mystique and blissful enchantment in your home. The Bliss Paradise Embroidered Cushion Cover features a vibrant color palette of pink, yellow, and blue and intricate embroidery, this cushion cover bestows an elegant yet luxurious look on any home decor. From its regal hues to its sophisticated embroidery details, this cushion cover makes your interior truly stand out!

www.indiacircus.com





GRAND PRIX
Home Elevators & Pools



Lifting up your spirits and your standards!

Grand Prix offers high-end, luxury elevator solutions and relaxing, aesthetic swimming pools crafted to give you a blissful experience.



Customized products



Premium quality



Cutting edge technology

Contact Now

+91-808 080 8785

Graand Prix, 407, Flying Colors, Pt. Deendayal Upadhyay Marg, Mulund (W), Mumbai - 400080.

www.graandprix.com