

SOCIETY
**INTERIORSTM
&
DESIGN**

www.societyinteriorsdesign.com

ABIN DESIGN STUDIO
Transcends Design Excellence
Standards in Every Project

Sonali Bhagwati, Aman Aggarwal, Jabali Mehta and Devanshi Vora,
Smriti Raheja Sawhney, Aashish V Anand, Kishore Hospitality Group,
Shibani Mehta, Pooja Bihani, Akshaya Mestry, Keerthi Tummala

***You look glamorous
for a reason...***



**MRJ TRADING PVT LTD.F/201, Shyamkamal C Bldg, Wing 1
Agarwal Market, Vile Parle East.Mumbai – 400057, India.**

Contact : +91 98200 68118 | app.tislaminates.in

AND YOU THOUGHT WE ARE ONLY INTO TILES?

Turn your bathrooms into a work of art with Johnson Bathrooms. A leading brand synonymous with tiling solutions and a legacy of 65 years, Johnson brings to you a wide range of sanitaryware, faucets and bath accessories. We have a select line of sanitaryware that comes with a unique germ-free feature for better hygiene. So, for a bathroom makeover, treat it special, with Johnson.

 **JOHNSON**
BATHROOMS
Sanitaryware | Faucets | Tiles





Science@work



Prevents
Dust Buildup



Sound
Insulation



Keeps out
Rain*



Thermal
Insulation

Nationwide Footprint Across 350+ Cities

Call: 1800 102 9880 (Toll Free) 74286 91568

Email: response@fenesta.com | Visit: www.fenesta.com

Only The Best Of Outside Inside Your Home

Keep the Outside Outside... Forever

Your home is your sanctuary. Shield it from outside noise, dust, pollution and rain*.

Switch to Fenesta and let only nature nourish your home and your life.



Fenesta
Better by Design

India's No.1 Windows & Doors Brand



uPVC | Aluminium | Solid Panel Doors

COLOUR PALETTE



Pristine White Flemish Gold Light Oak Walnut Mahogany Dark Oak Black Champagne Gold Diamond Grey

SOCIETY
**INTERIORS
&
DESIGN**
www.societyinteriorsdesign.com

Publisher: Magnate Publishing Private Limited

Consulting Editor: Swati Balgi

Contributer: Priya Prabhu

Graphic Designer: Syed Zaid Inamdar

Business Heads

National, West Zone: Sunil Khavnekar +91 9820303096 Preeta Nair +91 9892746767

North Zone: Ravi Roushon +91 9818198689

South Zone: Rekha Kambhoj +91 9845587253

East Zone: Ashim Banik +91 9830056642

Gujarat: Madan Menon +91 9898002522



Contents

Cover Story

Abin Design Studio assimilates conventional and modern architectural elements to design path-breaking projects. **10**

Architecture

Aman Aggarwal, designs a striking project that draws inspiration from the city's modernist heritage. **24**

Profile

The Design Team have set benchmarks in the field of design by delivering varied, thoughtful and innovative projects. **32**

First Look

Architect Smriti Raheja Sawhney designs the PVR Directors Cut, a well-appointed cinematic haven, that exemplifies magnificence. **38**

Vijay Anand Associates skilfully revamps Vivanta by Taj, Katra by conserving the original architectural language yet suffusing a fresh and modern aesthetic. **44**

Restoration

Kishore Hospitality Group transmutes Elgin Hall a 1850s Villa into a splendid Boutique Hotel, by blending Victorian Splendor with Contemporary Elegance **50**

Workstation

Shibani Mehta designs an office in Mumbai by cleverly combining classic and modern aesthetics. **56**

Lifestyle

The residence in Camelies designed by Architect Sonali Bhagwati blends the surroundings with its luxurious interiors **62**

Architect Pooja Bihani has designed an avant-garde home that takes inspiration from the forms and colours of Bauhaus design. **70**

Designed by Studio Mestry this Mumbai residence amalgamates classical design elements with modern luxury. **76**

Designerscape

Keerthi Tummala's residence named 'LUNA' is a multi-layered city apartment that amalgamates timeless Yin Yang principles and modern Living. **82**

Flash back

Society Interiors & Design Competition & Awards, a Pan-India level zonal competition for Architecture and Design students, takes readers down the memory lane. **88**

Product Section

The latest round-up of products, furniture and furnishing. **92**

Society Interiors & Design is published once every month by Magnate Publishing Private Limited, 501, La-creme CHS Ltd, Kondivita VLG, MIDC, Andheri(e), Near Akruiti Trade Center, Mumbai, Maharashtra, India, 400059. Tel No: +91-993-0061-674. Editorial texts and illustrations are the copyright of the publishers of this magazine. No one may reproduce any material before permission is obtained in writing.

All disputes are subject to the exclusive jurisdiction of competent courts and forums in Mumbai (India) only.

2022 Copyright Magnate Publishing Private Limited.

Please address all your advertising, subscriptions and trade enquiries for to: Magnate Publishing Private Limited, 501, La-creme CHS Ltd, Kondivita VLG, MIDC, Andheri(e), Near Akruiti Trade Center, Mumbai, Maharashtra, India, 400059. Tel No: +91-993-0061-674. Email: info@magnatepublishing.in

MAGNATE PUBLISHING IS NOT RESPONSIBLE FOR ANY CLAIM MADE BY THE ADVERTISER

21st
SOCIETY
INTERIORS
DESIGN COMPETITION
& AWARDS
2024

**CALLING ALL COLLEGES
OF ARCHITECTURE AND
INTERIOR DESIGN**

**THE BIGGEST BATTLEFIELD FOR
FUTURE INTERIOR DESIGNERS AND
ARCHITECTS IS HERE**

Participate in the most prestigious Society Interiors & Design Competition, running successfully for 21 years, and make your dreams come true.

Register now

Visit: societyinteriorsdesign.com/events



Editor's Note

In this edition, we are delighted to share the overwhelming support we've garnered from professionals in the field for the Society Interiors and Design Competition and Awards. This annual event serves as a distinguished platform for students from all corners of India to unveil their most inventive and inspirational redesigns. These creative submissions are meticulously assessed by a panel of eminent judges. We wholeheartedly encourage all those interested to register and seize this invaluable opportunity.

Within these pages, we embark on a captivating journey, delving into a diverse range of projects crafted by architectural visionaries who have defied convention, pushing the boundaries of innovation, sophistication, and functionality.

Nestled in Kolkata and under the visionary leadership of Architect Abin Chaudhuri, Abin Design Studio stands as a global architectural powerhouse. This team of architects, interior designers, and branding specialists consistently delivers projects that emanate innovation and style. Be sure to read our cover story for a more in-depth exploration of this talented firm.

In the heart of Chandigarh, Charged Voids, led by Architect Aman Aggarwal, artfully blends Western modernism with the quintessential elements of Indian architecture. The Chandigarh Group of Colleges Student Hostel project presents a unique opportunity waiting to be uncovered.

In our revered "Profile" section, we bring to light the work of two exceptionally talented professionals, Jabali Mehta and Devanshi Vora, who spearhead the Mumbai-based Team Design. Renowned for their innovative solutions, this team has successfully handled projects of varying scales and sizes.

Our publication also features an array of creatively designed residential apartments LUNA Residence by Keerthi Tummala seamlessly intertwines timeless Yin Yang principles with contemporary living, resulting in a space of enchanting harmony; while Studio Mestry, Masterfully fuses classical design elements with modern luxury, Studio Mestry's creations offer a harmonious blend of opulence and comfort.

We also have the 'Upstairs' Residence by Pooja Bihani, this residence stands as a testament to innovative design sensibilities and showcases the architect's creative touch.

Vijay Anand Associates skillfully renovated the Vivanta by TAJ in Katra, retaining the original architectural essence while introducing a fresh and contemporary aesthetic. Lastly, in the vibrant city of Mumbai, Shibani Mehta's Office is a seamless blend of classic and modern aesthetics. It is adorned with intricate decorative moldings, traditional art pieces, and exclusive furniture.

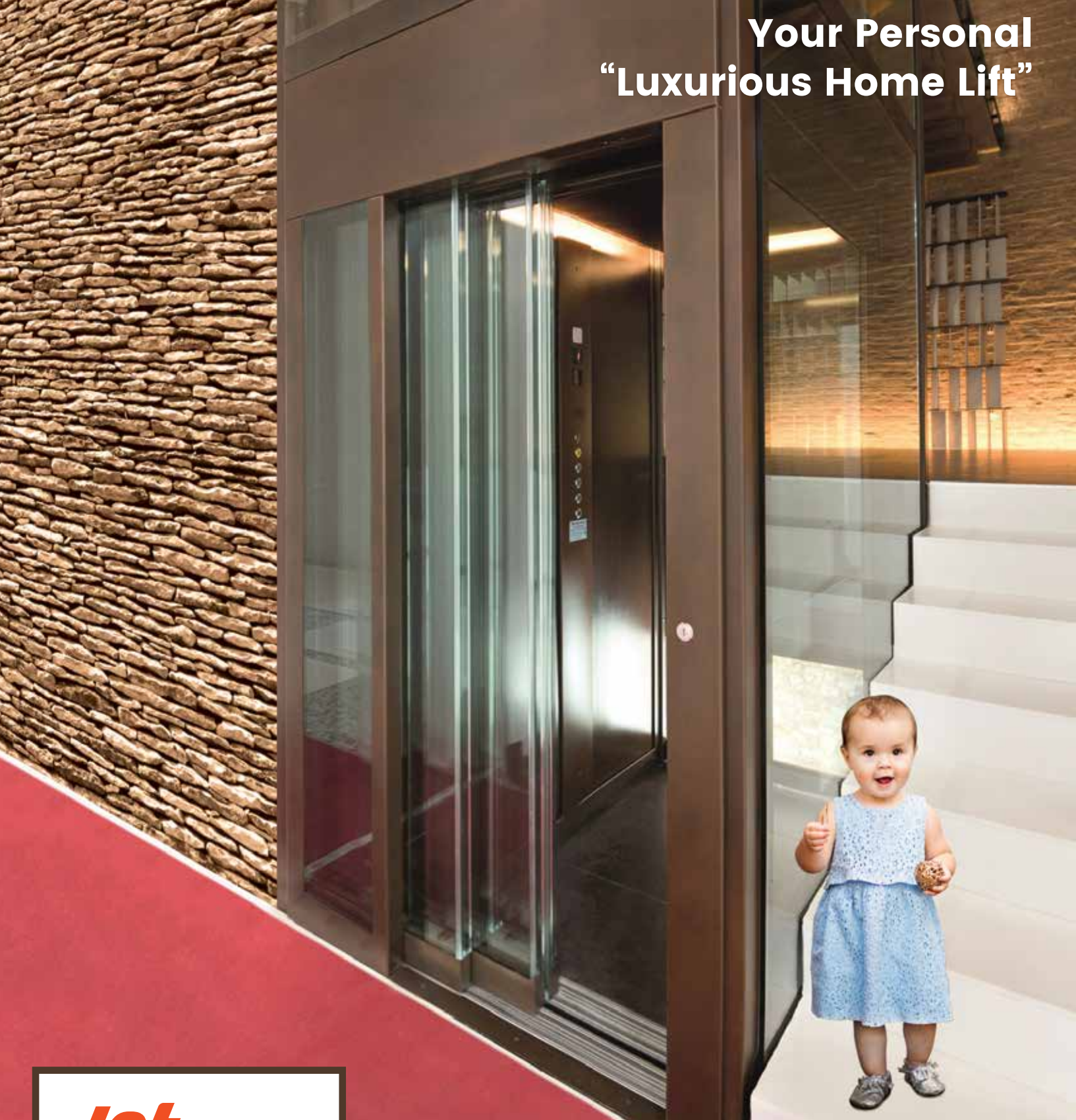
As the festive season approaches, we extend seasonal greetings on behalf of the entire team for a year filled with prosperity and success. We look forward to witnessing the continued growth and innovation in the world of design and architecture.

Regards,

-Swati Balgi



Your Personal “Luxurious Home Lift”



JetElevator
Italian Home Lifts

Bungalows | Row House | Duplex Flat | Pent House | Showrooms | Resorts & Hotels

Attractive Looks, Requires Small Place, Single Phase 230V,
Auto & Manual Door, Pit 80mm, Head Room : 2300mm,
No Machine Room, Noiseless & Easy to install.

Head Office: 207- Gold Crest Business Park, L. B. S. Marg, Ghatkopar W., Mumbai 400 086, India.

Tel.: 022 -25003444 / 441 **Mob. No.:** +91 82862 65555 **email:** sales@jetelevator.com

www.jetelevator.com

Society Interiors & Design - Oct



Collaborative Architectural Marvels

Abin Design Studio integrates traditional and modern architectural elements to design outstanding projects. Read on to know more

Abin Design Studio is a globally recognized architectural firm headquartered in Kolkata, headed by visionary Architect Abin Chaudhuri. With a dynamic team of architects, interior designers, and branding specialists they have redefined the standards of design excellence in every project undertaken, constantly pushing the boundaries of creativity, challenging traditional norms, and crafting spaces and brands that epitomize innovation, sophistication, and functionality.

Abin Design Studio serves as a vibrant hub of creativity, where ideas flow freely, collaboration thrives, and originality flourishes. "Our skilled professionals bring a wealth of experience and expertise from diverse design disciplines, whether it's creating architectural marvels, transforming interiors into captivating realms, or strategically shaping brands," says Architect Abin Chaudhuri.



With a portfolio spanning various sectors and a reputation for excellence, we invite you to embark on a design journey with **Abin Chaudhuri** where creativity knows no bounds, and every project emerges as a masterpiece waiting to be unveiled. We speak to the expert to understand his design vision and more...

What are the thoughts that cross your mind when you take on new projects?

When embarking on a new project, my thoughts invariably centre around its potential impact. It's not just about design; it's about seizing an opportunity to influence and inspire many. I assess whether there are challenges we can overcome and whether there's a profound message this project can convey to all who encounter it.

The essence of taking on a project isn't solely about crafting a design; it's about setting an example and establishing a benchmark. These benchmarks become touchstones for others to aspire to. So, if there's a project brimming with possibilities and after numerous discussions, we decide to embark on it, it's an opportunity where we don't just design; we create a legacy that doesn't necessitate navigating conscious complexity.

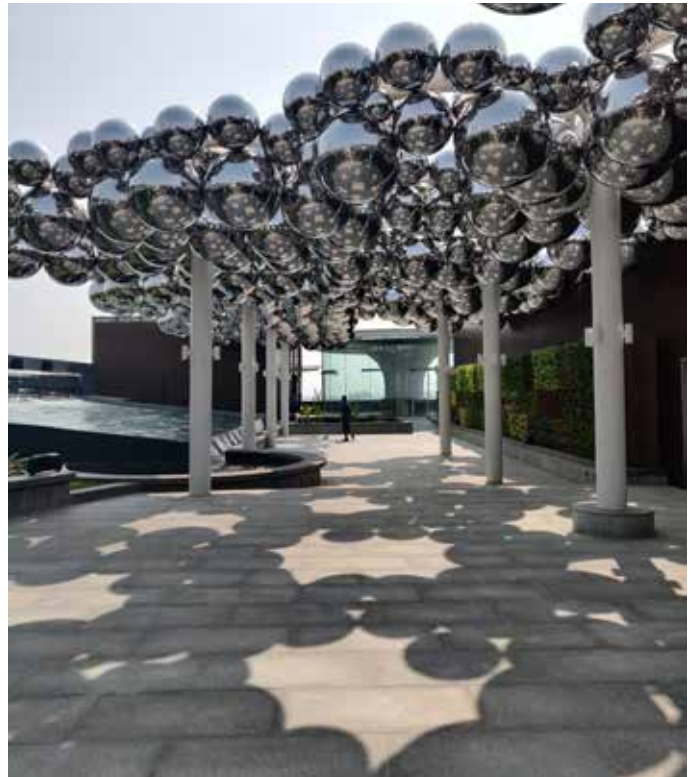
Do you find it difficult to consistently develop innovative designs for such diverse needs?

The pursuit of innovation is an ongoing endeavour, and surprisingly, the constant constraints and challenges in the global south act as fertile ground for generating fresh ideas. We delve deep into these problems, analysing them thoroughly, and from there, a myriad of fascinating solutions emerges. The diversity of our country and the multitude of projects we engage in ensure that we continually face a wide array of multi-layered challenges. These challenges, in turn, become the wellspring from which innovation flows, constantly invigorating our practice.

What are your best personal experiences while working with a diverse national and international clientele?

In my experience, whether it's working with national or international clientele, the essence lies in the mutual education and enrichment that occurs during the collaboration. It's about forging a deep understanding of each other. In our design process, the client is not a separate entity; they become an integral part of our journey.

We strive to discern their needs and, based on that, determine our role in infusing architectural ideas into the project. However, the noticeable difference between national and international clients often revolves around time. International clients tend to place a strong emphasis on timelines and are often more stringent in their adherence to them, which can sometimes differ from our experiences with national clients.



What defines your work?

We are privileged to create, as we are responsible to manifest. The privilege is earned through tireless hard work; the responsibility is realized as an emotion inherent to our paths in life. The architectural practice has always bridged the complex gap between people's needs versus their aspirations, sometimes falling into a set pattern of beliefs, past learning and known results. To break the stagnant glass ceiling, it is often the new paths taken in our lives that can create a new state of practice, one that is responsive to the changing timeline.





The studio has evolved through winning competitions, getting awarded with large scale projects to being honoured to design for private clients, who have eventually become mentors in professional as well as personal life. Through a diverse portfolio, the one challenge always taken up by the studio has been in the exploration of materials, technology and the design vocabulary, without compromising with the quality of the design. Explorations through architecture, installations or pro bono practice have been used as a tool to create projects. A path-altering example is my hometown of Bansberia, where successive projects taken up by the studio have become a catalyst for creating confidence in the common man, and even strengthened our faith in the ability of design in changing lives.

Real estate is usually a point of contention amongst design studios, due to the challenges of modular design and limited autonomy of architects to provide good solutions, but a necessary realm for practice, as such large scale designs have a larger impact on the society. Our studio intends to have a role to play, not just in designing for private clients, but also keeping up with the social context through generous design for the public, contributing to the upliftment of the social labyrinth. The need for good architecture can only be made aware through public projects and pro-bono interventions, the respect of the common man may be earned by dissipating the myth that architecture is only for luxury, and proving that it has a long-term responsibility towards socio-cultural development.

Time and again we have realized that architecture is a collective endeavour, of the dreams and passions of the client and designers rising hand-in-hand, the skills and enthusiasm of the craftsmen standing at the forefront, hoping to inspire the world around them. The variety in practice, from the expansiveness of high-rises to the minutest details of fixing, have been an exploratory journey for the mind, pushing us to discover further, not just through ideation, but also through physical manifestation, to immortalize the idea.

The book is not only about our efforts, but also the story of the people working with us, being deeply involved in the process, through extraordinary sacrifices, the chance to meet future mentors from unusual walks of life, giving manifold guidance to the studio, and the opportunity to continue our exploration through their unflinching support.

The past few years we have designed projects, which remind us that every good architecture is in itself a great mentor. Taking inspiration from each such lesson, the studio as a team have poured their passion, dedication and thought-process, reflected in the work, the celebration of which is the crux of the book.

What type of projects challenge you the most?

I find myself most invigorated by projects that call for leadership in public engagements and possess the power to shape design concepts within a broad spectrum of minds. Furthermore, I am particularly enthused by endeavours that extend an invitation to collaborate with a diverse array of groups, all in the name of fostering inclusivity.

Having won so many national and international awards is there something more coveted that you aspire for?

Amidst the accumulation of numerous national and international industry hours, our path doesn't merely progress linearly. Rather, day by day, we embark on a journey driven by a quest for projects that resonate with deeper significance and inclusivity. These projects aim to touch the lives of many. They are a canvas upon which we paint the theories and philosophies that underscore our work, crafting architectural marvels that transcend boundaries.

These creations must not only be meticulously designed but also inherently inclusive, capable of addressing the nuances of the social and environmental landscape. They serve as reflections of our commitment to systemic thinking, especially in the face of climate change. In doing so, they set a precedent for how architecture can be a force of transformation in the broader public sphere.

Do you think we're at par with the West regarding architecture and design?

Are we currently facing inefficiencies in architectural design? This issue can be divided into two distinct realms of understanding: the perspective from the global south regarding architecture and the challenges it poses. When addressing global service-related challenges, we generate numerous innovative design ideas. However, the representation phase becomes a significant hurdle, consuming around 80% of our efforts. Unfortunately, the execution often gets diluted due to the influence of real estate, public projects, and government decisions. Consequently, the envisioned quality of these projects is sometimes compromised, leading to uncontrolled constructions and erratic budget allocations.

This issue leaves us lagging behind in terms of public architecture. However, in the private sector, we manage to excel in certain cases because execution is more straightforward. Another crucial aspect is education. The concept of architectural education plays a pivotal role in how projects are conceived and executed. In this context, there exists a significant degree of laxity in educational standards, which has contributed to our ongoing challenges in the field of architecture and its equations.

What are your forthcoming projects?

In the tapestry of our forthcoming endeavours, we weave a rich and diverse narrative. Beyond the hallowed halls of academia and the corporate citadels we've designed, we now venture into the realm of homes, a new chapter in our creative odyssey. These undertakings, while laden with multifaceted challenges, beckon us with a siren's call.

Yet, it is the projects fuelled by a vision for the greater public good that set our hearts ablaze. Despite the financial and material constraints that shadow their path, we find ourselves drawn to the prospect of crafting ideas that can metamorphose countless lives. Our project portfolio is a constellation of opportunities, and as we tread this path, we dance with dreams and possibilities, eager to breathe life into them.

What is your take on sustainable architecture?

Sustainable architecture is not merely a theoretical concept; it's an imperative response to our current world plagued by climate change. Responsibly managing resources stands as the linchpin in architectural theory today. In fact, in my perspective, architecture devoid of sustainability lacks its very essence. Without a commitment to sustainability, architecture loses its meaningfulness.



Sadly, amidst the flurry of construction, many buildings rise without a thought to reusing resources or value engineering. However, for us, architecture's true success lies in its inclusivity and sustainability across multiple facets. It transcends certification labels; it's about our responsibility to the environment, to nature, to the materials we use, and to the people who will inhabit these spaces. It's also about being fiscally prudent. Sustainability, for us, is a tapestry that weaves together design, people, and the environment, making architecture a resounding success.

Your message to the budding and aspiring architects from India.

For the budding architects in India, here's my message: In the realm of practicing architecture in the global south, there are unique challenges to overcome. The significant gap between ideation and implementation is one such challenge, unlike what's often experienced in the West. Here, the key is perseverance. In the journey from idea to execution, while 20% might be dedicated to generating ideas, a significant 80% goes into the meticulous implementation, navigating challenges, and surmounting struggles.

Success in this context requires unwavering tenacity and conviction. It's about envisioning grand projects and realizing them, all while ensuring they resonate with people and the environment. Architecture should be inclusive, thought-provoking, and respectful of its surroundings. It's not just about 2D or 3D visuals; it's about enduring impact.

The process of creating, without compromising on these principles, is both an exciting and challenging endeavour. Embracing this journey will make practicing architecture in the global south a truly fascinating and fulfilling pursuit.

The Loft- Collateral of Terraces

Legacy at The Loft is the serendipitous extension of a 35-year-old home in an attempt to preserve the physical and emotional history while acknowledging growth and evolution of the residents. The existing building is a G+1 parental home, built by the architect's father. To immortalize the man who was a central pillar of inspiration and admiration in his life, the architect wished to add on to the legacy of his childhood that molded his upbringing, by preserving the existing but enhancing it with a little of his own developed flair.

The overall design is employed in retrofitting the loft space atop the retained structure. The major benefit of the site was that it provided an extraordinary opportunity for a multiple terraced structure. This was taken advantage of, to create a triple layer terraced abode consisting of the living facilities, toilets and a study. Each of the spaces overlooks a terrace.

While the older building was repainted in beige, it provides the neutral base for the new construction which is a celebration of colour and art. The structural skeleton in primary shades complement and provide the backdrop for antique pieces and period furniture from the yesteryears which are part of the architect's collection, crated through travels domestically as well as overseas. Ceramic tiles, steel and wood have been harmoniously used to achieve timelessness in design. The binding element of the house - the striking mosaic flooring is a result of recycling the left-over tiles from various projects.

One of the most striking spaces in this uniquely enthralling construction is the front terrace, which showcases a myriad of antique pieces from large various ceramic and brass vases, to the traditional solid wood columns to a specially collected wooden temple goat from Kochi, all of which give the sense of a miniature museum but connected to the context with the integration of potted plantation in varying heights so as to camouflage the interiors from the exterior.





Swarnim International School

Children spend a considerable duration of their formative years in a school, and hence the built environment is key in shaping their developmental approach. As a school is rightly called a student's "second home", home must be a place of comfort, growth, safety and empowerment. Additionally, whether a small child or an adolescent, it is not uncommon for them to fancy a small corner, nook or niche anywhere in a place that they frequent and to make it their "spot" where they can spend hours carefree.

The school's design aims to create a harmonious and stimulating learning environment that prioritizes student engagement and well-being. While the overall massing sees a "tetris-stacking" of sorts, a harmonious composition of blocks exudes a dominative yet protective sense. The facade seems proud in its surrounding but on entering, becomes a C-shaped plan, skirting the field and playground. It is designed with a modern and minimalistic approach to create a sleek and cohesive design. The building's jali facade, highlighted in red, adds a characteristic element to the design. Functionally, it enables cross ventilation and an exciting play of light and shadow that is dynamic with the movement of the sun as the day progresses.





The design incorporates several break-out spaces either as planted courtyards, smaller informal corridors and play areas for children to informally interact outside the classroom. The internal landscaped courtyards provide a welcoming and open atmosphere. These spaces are strategically placed throughout the building to provide a sense of connectivity and integration between the interior and exterior spaces. The landscape is carefully integrated into the design, with greenery seamlessly blending into the building's overall aesthetic.

The triple height cut outs are a prominent design feature highlighted in vibrant colours. When viewed from the outer or inner facade of the building, since they have slender cantilever on either side, they seem to create unique chambers that break the monotony of the otherwise flushed facade. Due to their scale with respect to the surface punctures on the superstructure, they create a sense of grandeur and openness while providing ample natural light and ventilation throughout the building.

The use of bold colours, unique design features, and seamless integration of interior and exterior spaces contribute to the school's modern, dynamic and hence "young" aesthetic.





RPSG Corporate Office

The corporate office began as a forefront of experimentation with spatial narrative through craftsmanship. An organization of stalwarts, intent of creating an atmosphere of ethical equanimity, the client gave its blessing to transcend the boundaries of 'container' and 'content'. The client being an avid patron of the arts and an enthusiastic collector, the design intervention required a corporate office that merged with the idea of a contemporary museum. The space was specifically designed to house artefacts and human aspirations, along with a running work environment.

The central core diffuses into multi-planar spaces, with natural light washing across the full-height atrium, filtering into seamless working spaces, segregated vertically as required in the hierarchy of corporate offices. Although physically segregated to justify efficiency of function, the spaces are visually connected, transcending boundaries of closed office habitats, celebrating art and life through accessibility and ownership through a sense of pride.

A play of monumentality and intimacy, subdued material palette, and larger-than-life focal elements was implemented for a grand entrance atrium. The design is reminiscent of the life-affirming river 'ghats' of the country, leading up to the spires of temples and places of collective wisdom where everyday life meets spirituality.

The grand steps leading up to the atrium; declare a proprietorship over the valuable collection of art, leading up to the library shelves, which house the invaluable collection of literary treasures. The challenge of 'content display' has been addressed by utilizing partitions between several conference rooms, which have been re-imagined as the library shelves.

Each lobby introduces the design language of each floor. The reception desks have been treated in various ways to express the same. From back-painted glass to even leftover carpet rags, use of colour, artwork and material has been utilized to create customized statement pieces.





Chromatic Indulgence

Colour is a significant catalyst for creative exploration, which made its integration into this project a major design decision. A father wanted to gift his entrepreneurial son a space for innovation – the latter was venturing out on an IT startup journey. Our responsibilities, here, were more than those of a designer – we visualized this office to be a stimulating journey through various vibrant expressions.

A number of challenges governed our design process informs the architects he further adds “The site was linear, with light coming in from the opposite end of the entrance through the only window in the entire space. Nevertheless, maximum natural light was to infiltrate both, the workspace as well as the cabins. This was achieved by a primarily open floor plan with workstations interspersed with planter boxes which double as storage cabinets – an efficient furniture design to integrate landscape in an otherwise tight space. Secondly, since the primary users were young employees, a “quirky” space was to be envisioned, while not losing the integrity of a corporate office. The 3 executive cabins were cordoned off in glass cabins to achieve the necessary private spaces while also maintaining the overall transparent nature with areas which are more free-flowing and spill over into each other.”

Upon entering the office, a vibrant Reception leads into the main Workspace via the service annex. This annex consists of washrooms, a pantry, the server room and the cafeteria. Placing these adjacent to each other, separating only the cafeteria from the rest of the annex, across a passage, the user is provided with an opportunity to feel the expanse of the work area lying beyond, only after stepping into it from the narrow passage. This also enhances the principle of “Axis” of the space. The choice of keeping the services and meeting room near the Entrance was for the ease of logistics.





Whether it's the solid partitions or ornamental furniture or dramatic accent pieces, "layers" have been created to fashion a stunning experience of "chromatic indulgence". This is seen in the "crafted colour" doors in rainbow hues; a cafeteria cladded in glass tiles to achieve a monolithic look; a sculptural bench, in the Reception, painted in a gradation of colours; the Conference table top and console, whose fascia are treated with graphically exploded paintings, with synchronized shaded chairs – all of which are sitting on a monochromatic backdrop of white terrazzo and locally available black "Kadappa" stone, generating a remarkable visual as well as spatial experience. Exposed services were another practical yet creative intervention of doing away with conventional flat false ceilings and allowing the room more volume.





Arthshila – a Cultural adaptation Re-using private infrastructure

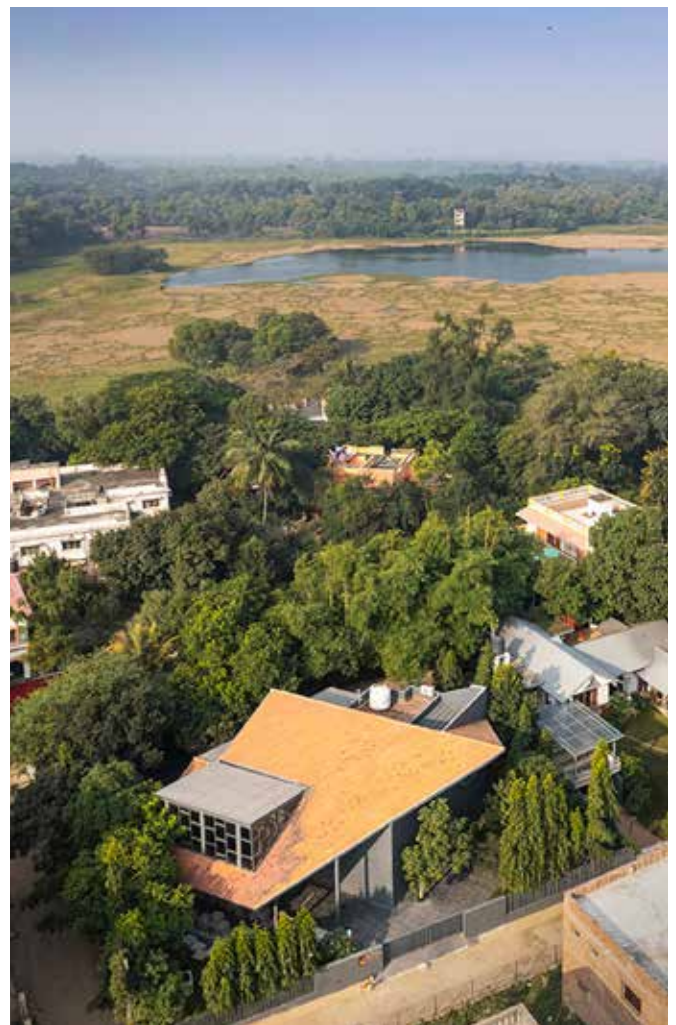
Santiniketan is the cradle of the Bengali Renaissance, primarily because of its close ties with Rabindranath Tagore. This is the place where the red soil and the air breathes music, art, and, culture. Inspired by this unique setting, a center amidst nature emerges as a cusp of culture and heritage which resonates with Bengal's ethnicity in a different spectrum. Arthshila is a first-of-its-kind confluence of workshops, exhibition spaces, as well as indoor and outdoor art galleries.

"A 22-year-old architect, with the help of his professor, sketched a vision of a residential building with a sloped concrete roof. Decades after, when the founder of Takshila, an Educational Society, approached ADS to restructure a 3BHK residence into a cultural epicenter, it was a dream that came true. Definitely, it is a unique dream for any architect to subsume a different function onto the same building footprint." Says Abin.

The strategy taken was simple: to retain the profile of the old residence, an additional extension to the same slope of the house is introduced. This creates an elaborate shading device for the open plaza to protect it from the harsh summer sun and torrential incessant monsoon rain. The extended roof serves a dual purpose by also becoming the unique feature that narrates the language of the space and adds a cultural scale to the building – it transforms a humble home into a grand pavilion for public gathering.

The internal rooms in the Ground Floor are converted into galleries while the top floor rooms and terraces witness their transformation into a library, a gallery, and guest rooms.

To pay homage to the immediate surroundings, this project after extension has restored all the existing full-grown trees and yet navigates the roof for a higher extension to cast long shadows & bring light through the skylight.





Terracotta tiles on the roof and MS structure are the primary elements of this project. Pandomo flooring is seen in the interior whereas the exterior is clad with black Kadappa stone.

The exterior landscape becomes a part of the building as it is used as a "sculpture court" – a multipurpose lawn to showcase displays. The peripheries also accommodate a pantry and outdoor seating which can be repurposed as a performance space or as seating for the audience that attends an event held in the AV Room. A soft threshold has been established through the playful arrangement of seating blocks that sits at the juxtaposition of the indoor and the outdoor.

With such subtle design interventions throughout, it is attempted to only tweak the scale of the previous house into a space that accommodates more users at any given time, without losing the charm and essence of a home when one enters the space.

Today, Arthshila acts as Santiniketan's vital part of cultural activity since it acts as public forum. It is that one project in which a redo of an age old residence is transformed into a center that was born from a desire to fit into the soft rural landscape and pay homage to the site's unique architecture. This is an exemplary rendition of a true Adaptation.

Sculptural Design Inspired by Corbusier's Brutalist Aesthetics



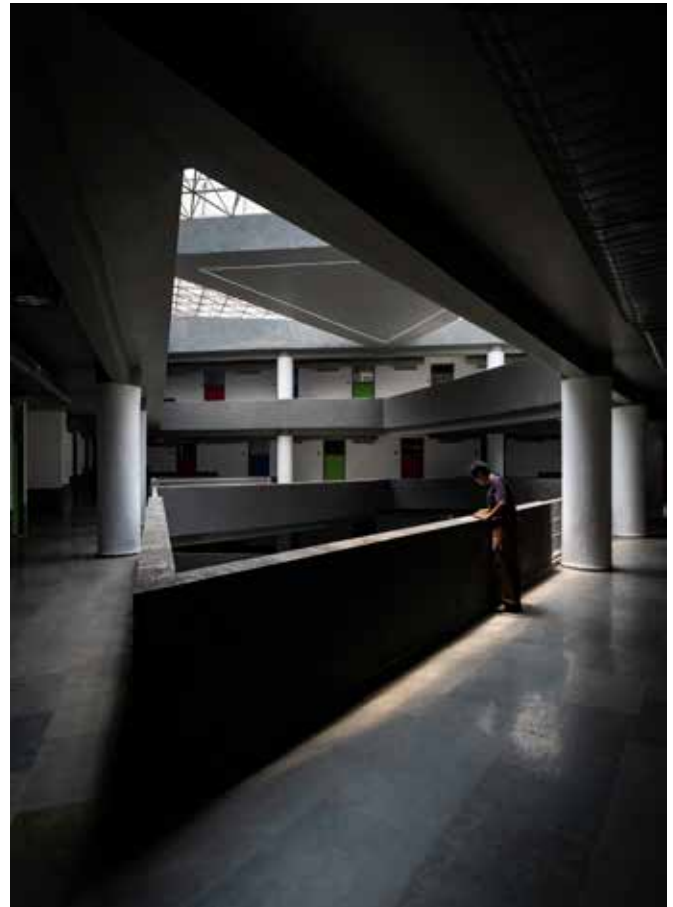
Architect Aman Aggarwal draws inspiration from Chandigarh's modernist heritage, evoking the architectural legacy of Le Corbusier in his design for the Chandigarh Group of Colleges Student Hostel.

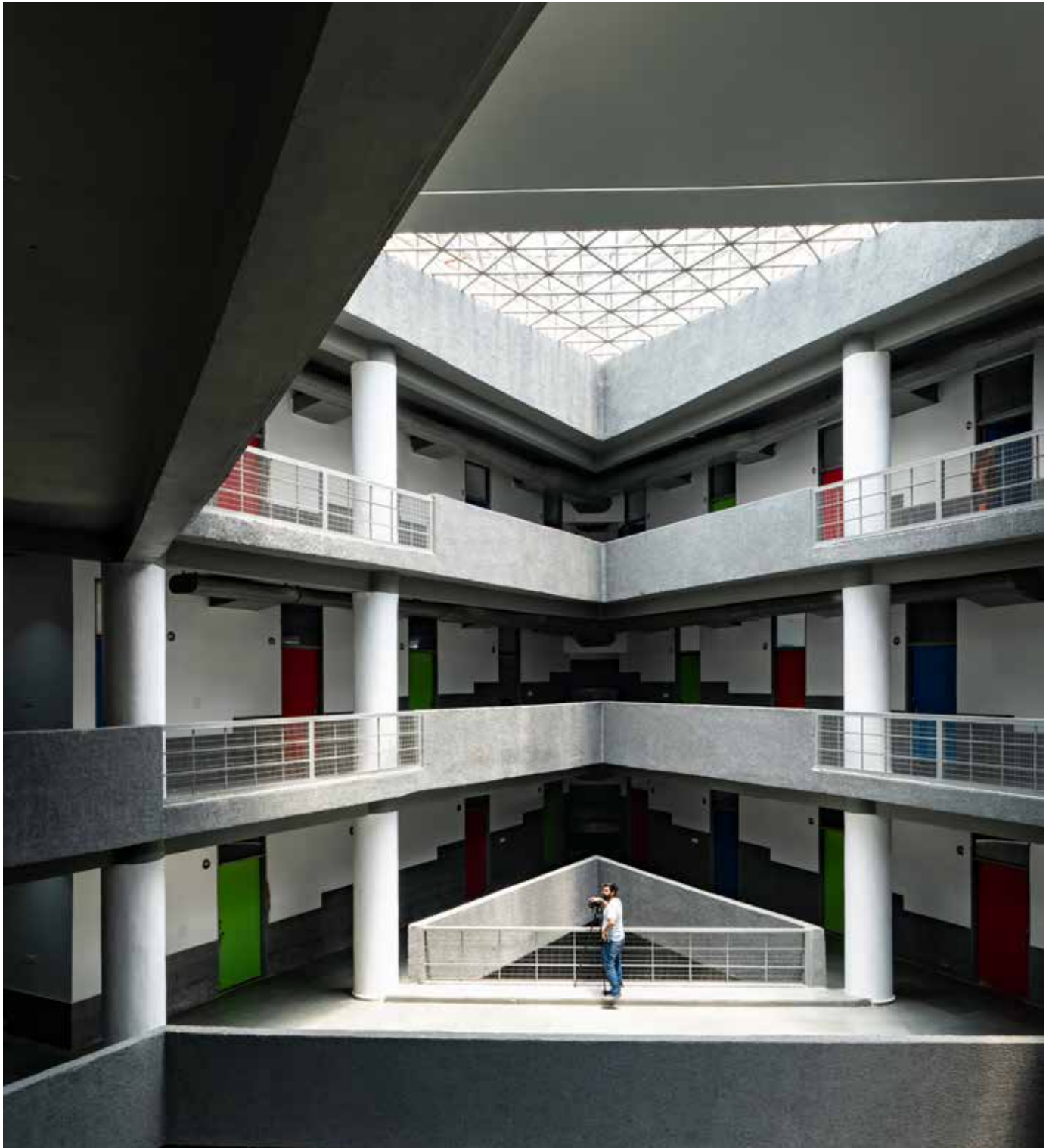


Aman Aggarwal, Principal Architect, Charged Voids, need no introduction. He is a renowned architect with a global reputation for infusing spiritual essence into architectural creations by leveraging the elements and adapting to climate conditions. Shaped by the fundamental principles of modernism as laid out by Le Corbusier and the mentorship of the late Pritzker Prize-winning architect BV Doshi, Aman Aggarwal's design philosophy is a blend of historical knowledge and forward-looking vision, aiming to bridge our illustrious past with the promise of the future.

This project is a masterpiece designed by the talented architect. The project, situated in close proximity to the city of Chandigarh, draws inspiration from the city's modernist heritage, famously associated with the architectural legacy of Le Corbusier. Adding insight on the design approach and inspiration Aman Aggarwal, Principal Architect, Charged Voids says, "Its sculptural and brutalist design pays tribute to Chandigarh's historic structures, while incorporating core design philosophies derived from Corbusier. The hostel building's restrained choice of materials and colour schemes, combined with strategic use of skylights, creates a distinctly spiritual identity, shaping the sensory experience within."

The primary design concept revolves around breaking away from the conventional style of the campus buildings. The hostel building, free of boundary walls, is designed to offer covered recreational areas accessible to all. Repurposing a previously deemed unsuitable bus yard for construction, Charged Voids devised a simple triangular plan, making the best use of the uniquely shaped site and incorporating different levels to craft multiple interconnected volumes.



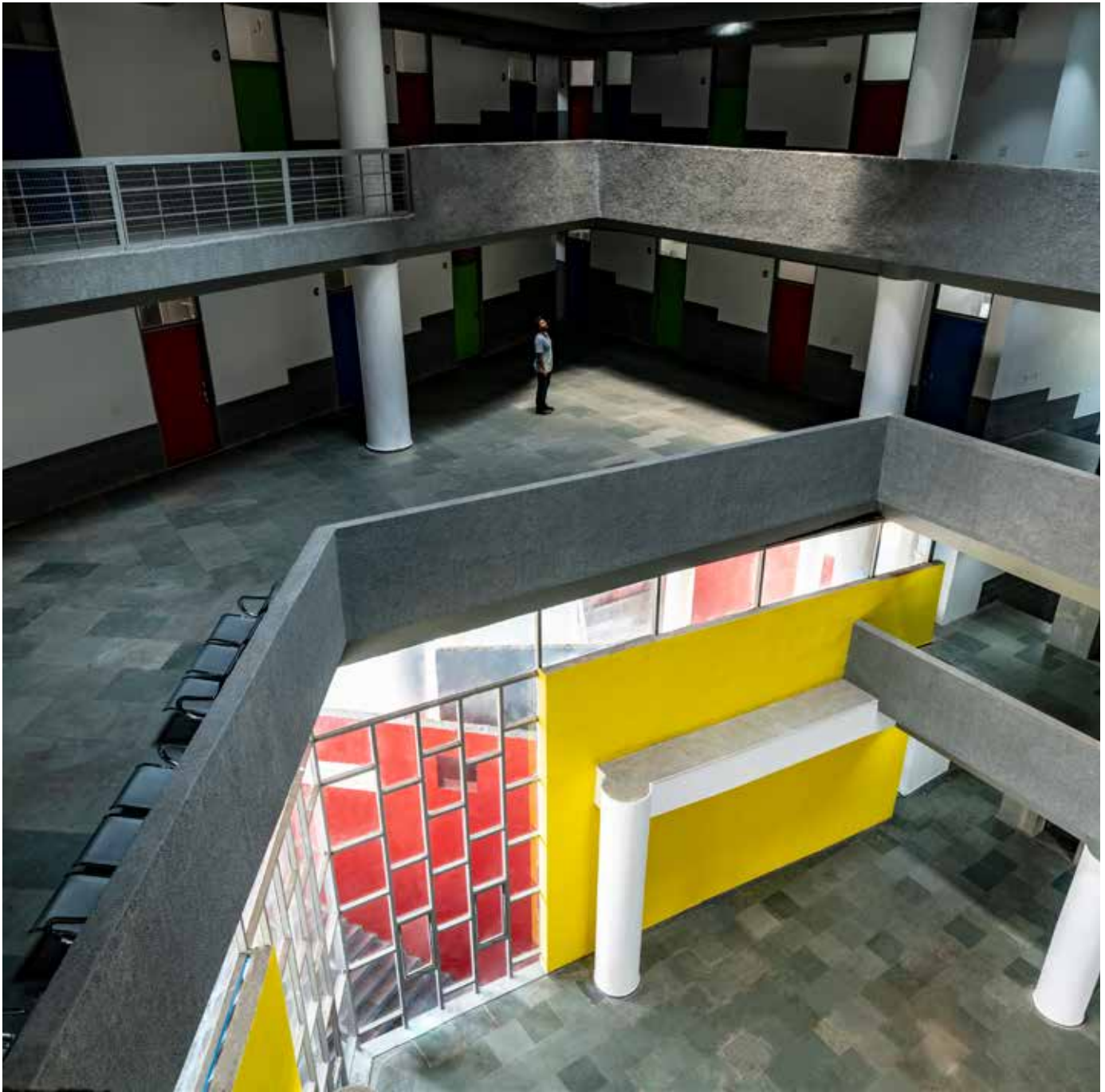


This triangular plan not only maximizes the site's potential but also introduces a dynamic quality through interconnected levels and well-lit interior spaces. A central atrium, with a triple-height sunken public court, is intersected by bridges at various levels and is crowned by large skylights. During the day, the lower floors, including the sunken court, are open to the public, transforming into spaces exclusively for hostel occupants after closing hours.

The material palette and colour choices of the hostel building are heavily influenced by Le Corbusier's architectural principles. Materials such as Kota stone flooring, grey grit-finished exteriors, and predominantly white surfaces punctuated by primary colors create an atmosphere of exploration and delight. The structure embodies a sculptural quality reminiscent of Corbusier's brutalist vocabulary.







The ground level encompasses the reception, dining area, and an adjacent kitchen, while the first floor accommodates a reading room, administrative spaces, and the warden's quarters. Student accommodations flank the sky-lit atrium on the upper floors, with bridges providing overflow spaces and ensuring smooth circulation between corridors. Each room is equipped with a covered balcony to ensure abundant natural light.

Charged Voids' core design philosophy revolves around the reverence for natural light. The inclusion of skylights enhances the overall ambience of the space and offers an enriched experiential character. In the midst of the plain grey and white structural elements, primary colours are skillfully introduced into the design to evoke a sense of wonder and joy among the students.

Despite working on a tight budget, the project presented a challenge that Charged Voids skillfully addressed. Instead of a linear site, the client initially favoured an existing green area, but Charged Voids suggested preserving it and repurposing a previously disregarded bus yard. By adopting a straightforward triangular plan and integrating passive design principles like the central courtyard for ventilation, skylights to reduce the need for mechanical ventilation, and boxed windows, the project effectively maximized the site's potential.



LUXURY FOR EVERYONE



A wide collection
of designer Art Basins



Top of the line Intelligent Water Closet
with built-in smart technology



 **LIFETIME**
WARRANTY
ON FAUCETS*

Sophisticated design and robust engineering come together to create the Plumber Bathware range. Now it's your turn to transform your functional space into a personal wellness oasis.

PLUMBER BATHWARE

SANITARYWARE • FAUCETS • SHOWERS • ACCESSORIES

*Visit our website for details.

Suave Designs

Jabali Mehta and Devanshi Vora of The Design Team have set benchmarks in the field of design by delivering diverse, thoughtful and creative projects.

Jabali Mehta and Devanshi Vora, Partners at The Team Design, a Mumbai-based architecture and interior design firm, are a powerhouse team who are shaking up the design scene. With their limitless imagination and contagious zeal, they are revolutionising spaces like nobody else. With her expertise and vast knowledge of construction for two decades, Devanshi has used her know-how for providing professional PMC of interiors to developers for multi-store residential projects and common amenities for residential and commercial buildings and private residences. Alongside, Jabali is pivotal in leading the team with her creative vision and conceptual design ideas. Her belief to explore and think out-of-the box adds dynamism and uniqueness to the projects. As designers their effort is to build flexible spaces to anticipate and support this change. It can be rightly said that, the dynamic duo has quietly but resolutely made their indelible mark on the design scene.

Sharing insights on her design inspiration, Jabali Mehta Principal, Design Architect, The Design Team says, "Since childhood my parents and teachers have had no doubt about my artistic sensibilities. I grew up painting and creating 3d art and was always encouraged to follow my dreams. As a teenager I had a chance to meet and interact with a German Architect at a party, and instantly I knew that Architecture was my calling. At college I fell in love with the creation of spaces. I found it fascinating how inhabitants shape spaces and how the space shapes its inhabitants." She further adds, "As a student of Architecture I was introduced to works of Laurie Baker who was a British-born Indian architect, renowned for his initiatives in cost-effective energy-efficient architecture and designs. A true pioneer of organic, sustainable architecture, Laurie Baker is a role model for architects. His designs incorporate rain-water harvesting, energy efficient building materials, maximized space light and ventilation in brilliant harmony."



Interior designing for The Team Design, is a perfect blend of arts and science. Their designs are not only functional but they touch people's hearts and shape their lives. "Designing an interior space is challenging in many ways and so interaction with clients and understanding clients taste and their requirements is the only way one can design a space that's resonates with the client and his brand. Over the years we have learnt to read people, to juggle and compromise between all aspects of a project, be it materials, needs and desires of the customer, laws, costs and so on. We get our clients involved and collaborate throughout the design process", informs Jabali. Their exceptional people skills, enable the team to forge lasting friendships with their clients, going above and beyond to create spaces that transcend mere function.

There is a general awareness on being eco-friendly, sharing their approach on the same while designing projects, Jabali says, "As designers we want to facilitate human living and not dominate it. The idea is to fit everything in the poetry of existence and not disrupt it. Hence as responsible designers The Team Design strives to create designs that not only look good but are also reflective of the nature-health relationship which is most important in the built environment." Some of the firm's current projects include, Residence for Mr Naveen Jain, a 3000 sq. ft. apartment in a plush residential building in JVPD scheme, PMC works for residential building in JVPD scheme, PMC for residential interiors in JVPD scheme, 3500 sq. ft. Restaurant interiors in Andheri West, Office interiors at Andheri East, Farmhouse design at Aurangabad, 4500 sq. ft. residence in JVPD scheme, restaurant at Iskcon Juhu and interiors for Iskcon temple in Juhu, to name a few.

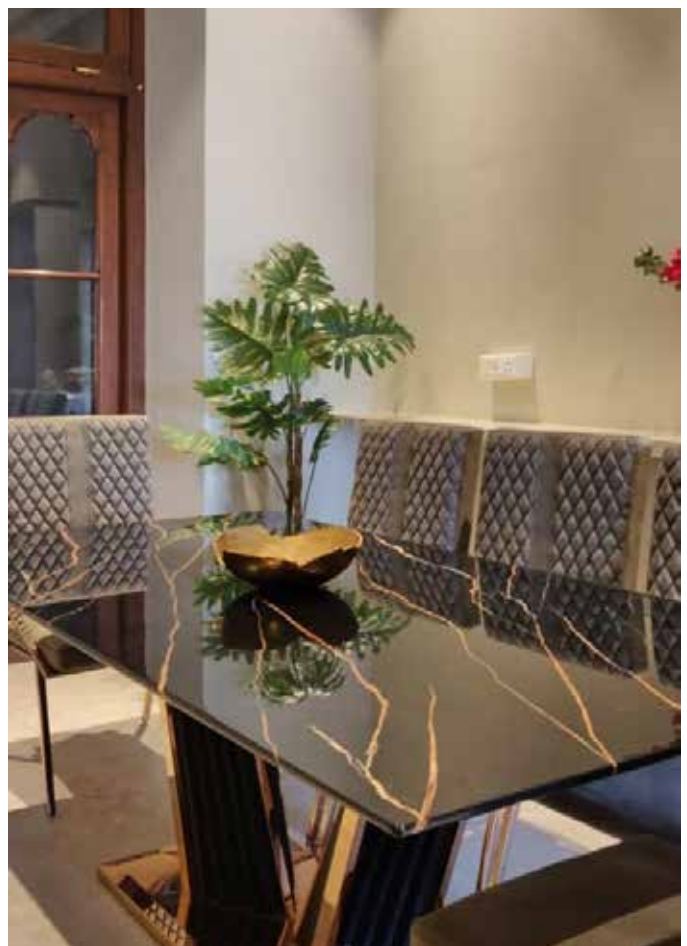


Let's have a look at some of their works in the Residential and Commercial domain:

Walkeshwar Residence: This Mumbai residence located in the Victorian style stone structure at Walkeshwar, flawlessly merges Classic and modern interior design style. Spread across 2009 sq. ft. with a 350-square-foot verandah, the home overlooks the Walkeshwar road, and the sweeping expanse of Arabian sea that unfolds in the distance. The designers have designed a home that refuses modern minimalism for old-world charm. It's warm, welcoming and homely aura, is precisely what the clients had stated in their brief to the team.

This was a challenging project. The stone structure built in the British era was originally designed to be bandsman's quarters with stables on the ground floor and staff accommodation on the 1st floor. The gorgeous structure is built with 1-foot-thick stone walls and wooden rafters that support the ceiling. The team had to work very closely with the structural engineers as they could not risk loading the structure with heavy walls or breaking any of the existing walls or windows. We had to retain all the wooden frames but that actually just added to the look. Originally the structure was dull and dingy as the openings were small. They made use of all the existing gothic style ventilators over the doors to let the light filter in. One of the bedroom had no windows at all. The designers planned a multipurpose sun lounge overlooking the Arabian Sea adjoining this bedroom so that light could filter in when the connecting door is kept open.









Office project in Vile Parle: This 1,500 sq. ft. office was designed to be a functional and beautiful office with minimal maintenance. The aim was to design a designated workplace that was conducive to maximizing not only productivity but also the health, safety, well-being, and performance of employees. It was about creating a space that was functional and interiors that provided a setting for success; a place in which people are happy to work. The shell comprising the walls, ceiling and flooring was designed to be in neutral shades with a few accents of metallic graphic paints on walls to give it a minimalistic yet beautiful interior. The walls were left bare to provide maximum surface area for light to bounce off making the interiors look light, bright and airy with a relaxed vibe. Our team's effort was to create a work environment that provided a blend of comfort and style that would enhance productivity and motivation.

The Design Team doesn't resist change and this is clearly obvious from the variety of work the firm is involved in. The increasingly high profile client list is the testimonial to the quality of work the firm has been continuously delivering. The firm's expertise in the field of interior design reflects in their projects. Their dedication and innovative methods have resulted into well-designed projects, with many more in the pipeline.

Luxurious and Indulgent Creation



Architect Smriti Raheja Sawhney is the mastermind behind the creation of PVR Directors Cut, a luxurious cinematic haven, exemplifying opulence, nestled within Ambience Mall in New Delhi.

Celebrating an illustrious 20-year journey in the world of Architecture and Design, Ar. Smriti Raheja Sawhney, the Founder of DesignEx, brings a wealth of experience and a keen eye for detail to every project. Raised in an architectural household, her upbringing instilled in her a deep appreciation for the nuances of design. With a commitment to revolutionary design, while remaining firmly rooted in practicality, Smriti's ventures extend far beyond the ordinary, crafting spaces that inspire.



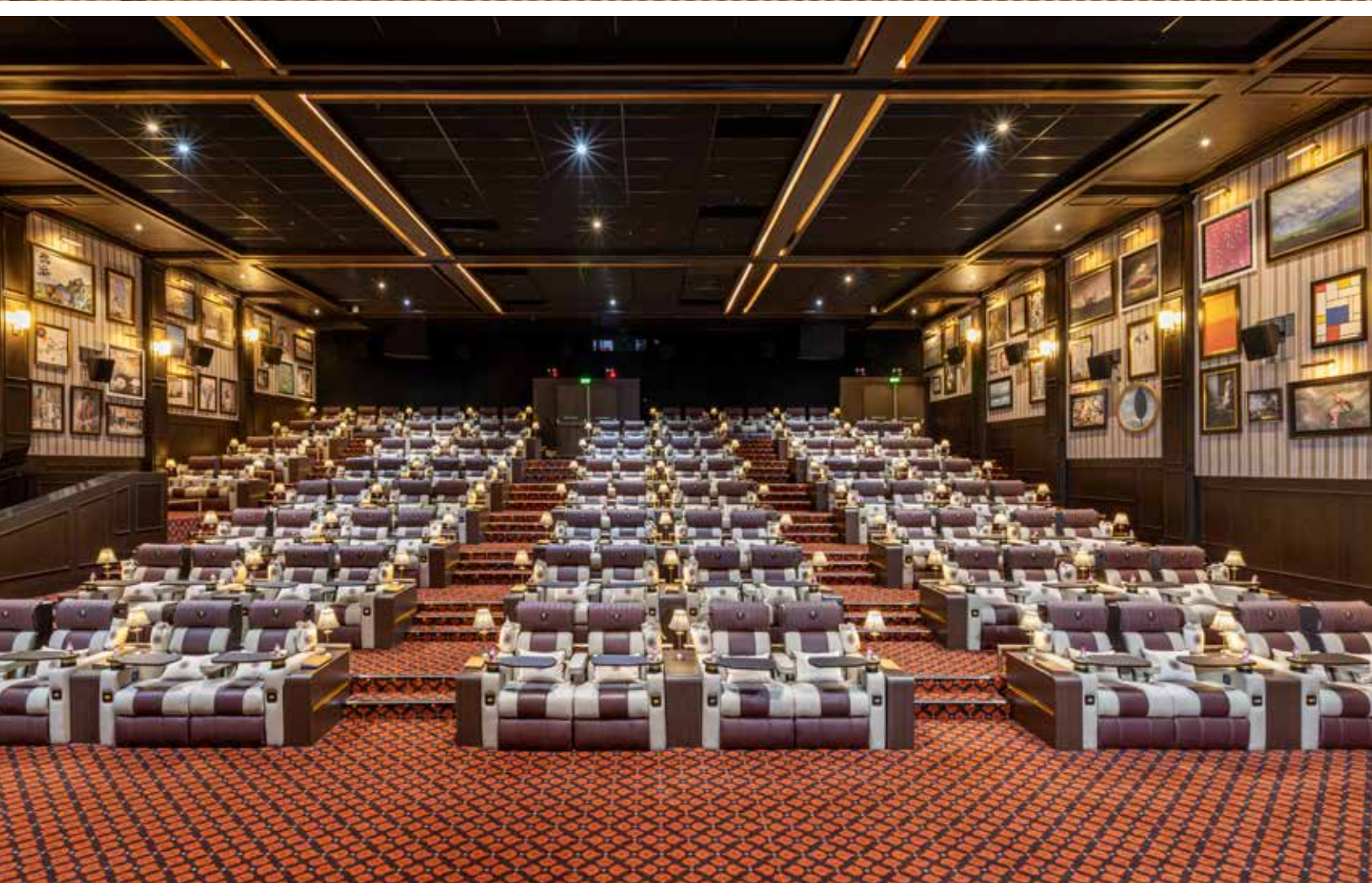
PVR Directors Cut, a lavish cinematic experience, is one such venture, executed by her, which stands as the epitome of opulence in the Ambience Mall, New Delhi. Spanning over a generous 8,000 sq ft, this cinematic haven seamlessly blends modern amenities with vibrant design elements and intricate details.

Right from the entry, the design language emphasises on luxury and opulence, greeting the patrons through brass-glass doors. Upon entering, the unconventional English green reception table, adorned with leather lined front panels and fluted moulding, radiates a regal charm. The chakra logo is inlaid on the wainscoted marble panelling on the side walls, meticulously treated with delicate mouldings to achieve a refined metallic finish. The lighting fixture, reminiscent of classical aesthetics, illuminates the area in a golden glow, setting the tone for the opulent experience that lies ahead.

To the right of reception is the sushi counter that has been given a modern look, transformed from dated Japanese aesthetics. Here, the decor elements such as wooden panels and reflective mirrors on the columns, enhance the culinary experience, along with the live counter that offers fresh sushi. The base colour palette of warm chocolate browns combined with gold and bronze accents sets off the sense of opulence, serving as an eccentric choice for a cinema. The ambience is complemented by comic artwork of cine stars adorning the walls, reflecting the vibrant brand identity of PVR.









The vast lounge area unfurls with a voluminous grandeur, accentuated by high ceilings, abundant metal accents, warm lighting, and the vibrancy of the furnishings. The wooden flooring, intricately laid in chevron imprints, adds a touch of sophistication. Classic chandeliers intermingle with ceiling LEDs, layering a luxurious glow over the interiors. The ornate ceiling divides the lounge visually into two different zones. Intricate details adorn the ceiling, walls, and columns, evoking nostalgia with their decorative frieze and mouldings. The columns, cleverly fashioned to emulate bookshelves, exude a literary charm. Plush couches in earthy browns and blues, complete with side tables, offer a comfortable respite, a departure from the commercial aesthetics.

Even the washrooms exude a sense of lavishness in its purest form. The women's lavatory features the finest pink onyx, the opulent marble available in India. Continuous panels of wallpaper envelop the space, creating a tropical vibe that complements the blush tones of the onyx. The Statuario marble exudes luxury, with fittings adorned in metal accents, tailored for the most discerning clientele. In stark contrast, the men's washroom unveils a monochrome marvel. Laser-cut marbles, intricately crafted with patterns of black and white, evoke a mosaic allure. The wallpaper, with its artful design, elevates the space to an experiential level, inviting patrons into a sensory journey.

Moving beyond, the left wing of the foyer hosts the popcorn bar, an expression of freshness and European charm. It exudes an air of continental elegance, reminiscent of a London cafe. Marble mouldings adorn the facade, paying homage to classical aesthetics. This space serves not merely as an antechamber, but as a prelude to the cinematic experience that awaits, inviting patrons to indulge in both luxury and culture.

Within the cine hall, every detail is meticulously planned for utmost comfort and luxury. Spacious sofa arrangements, complemented with towing tables, exude opulence with different themes, representing each hall. The first hall, known as Den, embraces the ambience of a grand library in a small area. The walls are adorned with book spines to emulate the ambience of a library. Gentle, focused lighting emanates from table lamps, imparting an intimate glow upon eager viewers. In the second hall, a lush tropical oasis awaits. Here, the ambience is a departure from the ordinary, as vibrant green carpets and exotic accents transport guests to faraway paradises. The fusion of cinema and tropical aesthetics is an unexpected delight, breathing new life into the viewing experience.

The pièce de résistance, the grand Broadway theatre, takes centre stage as the largest and most opulent of them all. The walls, adorned in resplendent shades of red and gold, exude an air of theatrical opulence. Wall sconces emanate a warm, inviting glow, while exceptional velvet drapes frame the screen, parting in a grandiose reveal akin to a Broadway show. The fourth hall, an ode to artistic expression, unfolds as an intimate art gallery. Painted artworks adorn both sides, setting the stage for a unique cinematic journey. The screen itself is framed as a work of art, blurring the lines between cinema and the gallery walls.

PVR Directors Cut, executed by DesignEx, is not merely a cinema but an opulent retreat that seamlessly marries modernity with timeless design elements, promising patrons an unforgettable cinematic journey in the lap of luxury. As Smriti Raheja Sawhney commemorates two decades of visionary design, her commitment to excellence shines through this project, ensuring DesignEx continues to deliver uncompromised and top-notch design compositions. Her journey stands as a testament to the transformative power of architecture and design, shaping spaces that resonate with elegance, innovation, and enduring beauty.

Blend Traditional Design with Modern Design Accents

Vijay Anand Associates skilfully renovates Vivanta by TAJ, Katra by preserving the original architectural language yet infusing a fresh and contemporary aesthetic.

Aashish V Anand, interior designer and co-founder of Vijay Anand Associates and Livingspaces, took on a captivating and challenging project. His task was to redesign the 24000 sq ft public areas of the Taj Katra Hotel, Jammu; a project that held a special place in his heart as his firm had originally designed the hotel two decades ago. Preserving the essence of the original architectural language while infusing the space with a fresh and contemporary design posed a thrilling challenge that Aashish V Anand eagerly embraced.

With careful consideration of the existing building's robust design language, Aashish V Anand and his team devised a brilliant strategy for the redesign. They artfully crafted a new structure that seamlessly integrated with the hotel's original architecture. Their primary objective was to create an interactive space that would establish a strong connection with the outdoors, providing guests with mesmerizing views of the magnificent TRIKUTA peaks.





To achieve this, they conceived an extension to the All Day Dining, designed as a full glass enclosure. This choice allowed the natural beauty to permeate the interior, granting visitors an immersive experience with the surrounding landscape. The crowning achievement of this addition was its roof, cleverly transformed into a spacious terrace with ample seating. This brilliant concept offered guests the dual delight of savoring a culinary experience while indulging in the awe-inspiring panoramic views. The result was a design that elegantly harmonized contemporary design with the timeless charm of the original structure and integrated the landscape with the interiors.





The lobby's interior design was thoughtfully curated to maintain a sense of continuity with the previous design, while also embracing contemporary elements. The architects decided to preserve the traditional concept of timber panelling, but with a modern twist, using contemporary painted finishes, mirrors, and metal to give it a fresh and updated look. In terms of furniture design, they opted for an eclectic blend of traditional elements combined with modern accents, all presented in a refreshing color palette. This carefully curated mix of styles added character and charm to the space while infusing it with a touch of modernity.

Furthermore, recognizing the importance of accommodating more guests, the designer created additional seating in the reception area. This thoughtful enhancement not only increased the functionality of the space but also ensured a more comfortable and enjoyable experience for everyone visiting the Vivanta by Taj, Katra Hotel. The result was a lobby that beautifully balanced tradition and contemporary flair, providing a welcoming and visually captivating environment for all guests.

"The added extension brought to life a stunning terrace, easily accessible from the lobby lounge. This inviting area features comfortable seating and warm fire pits, creating a cosy ambiance for guests to enjoy. With a glass railing enclosure, the terrace offers an immersive experience, allowing visitors to soak in the breathtaking surroundings. Charming elements such as patterned cement tiles and pebbles were artfully incorporated, enhancing the overall setting and adding to its allure. This versatile space caters to various needs throughout the day, from serene morning tea moments to evening snacks and intimate gatherings around the bonfire. Nestled amidst nature and set against the majestic Trikuta peaks, the terrace provides an idyllic setting for the Darshan of Ma Vaishno Devi." Adds Aashish V Anand



The original space underwent a truly remarkable transformation, now transformed into a spacious buffet area and open kitchen, meticulously designed to ensure a comfortable and uncrowded dining experience. For guest seating, a brand-new glass enclosure was skillfully added, extending into the exquisitely landscaped gardens, resulting in a dining experience unlike any other. The contemporary design language was vividly expressed through the use of vibrant, patterned tiles, intricate rattan work, and the introduction of a serene water feature.

Aashish V Anand and his team's remarkable redesign of the public areas at Vivanta by Taj Katra Hotel achieved a perfect harmony between tradition and modernity. The newly curated spaces deliver an unforgettable experience for guests, inviting them to bask in the natural splendor while savoring every delightful moment of their stay.

Project Details:

Furniture: Living Spaces

Sanitaryware/Fittings: Jaquar

Furnishing : Sarom, DDécor, Livingspaces

Lighting: Artlite, Havells

Art/Artifacts: Living Spaces

Flooring: Marble, Tile

Paint: Asian Paints

*Innovative Designs
Stunning Looks*

India's No. 1[®]
NIRALI
NG

STAINLESS STEEL KITCHEN SINKS



98
models

167
sizes

387
choices

SINKS FOR ALL YOUR NEEDS



Scan Qr Code For Nirali NG Catalogue

Mfg & Mkt by: Jyoti India Kitchensink Pvt. Ltd.

Head Office Mumbai : 225, Kaliandas Udyog Bhavan, S.H. Tandel Marg, Near Century Bazar, Worli, Mumbai - 400025

+91 22 2430 5500 | 2437 5511 | 2422 0109 | +91 77109 43445 | Email: sales@NiraliNG.com | info@NiraliNG.com

Delhi Branch Office : S-26, Ground Floor, Okhla Industrial Area, Phase II, New Delhi - 110020. | +91-93500 43092 | salesdelhi@NiraliNG.com

www.NiraliNG.com

Follow us on :  @NiraliNGkitchensinks |  Nirali_NG

Preserving Heritage Property



Kishore Hospitality Group Transforms Elgin Hall a 1850s Villa into an Opulent Boutique Hotel, by fusing Victorian Splendor with Contemporary Elegance







The Kishore Hospitality Group, a name synonymous with excellence in the hospitality industry, has achieved a remarkable feat by breathing new life into a 19th-century villa in Dalhousie. Originally built as a haven for British officials during the 1850s, this villa has now been reborn as an opulent boutique hotel that seamlessly fuses the grandeur of the Victorian era with the comforts and sophistication of the modern world.

Elgin Hall, as the property is now known, serves as a living testament to Victorian elegance. It masterfully weaves together contemporary amenities with a commitment to sustainability. The result is an immersive and unforgettable experience that transports guests back to a bygone era while pampering them with modern luxuries. Kavish Khurana, the visionary Founder of Elgin Hall, underscores the importance of not just preserving the property's heritage but also ensuring that every stay here is an indelible memory.

Elgin Hall houses seven distinctively designed rooms, each with its own character and aesthetic charm. From the warm Rustic Brown to the serene Ocean Teal, each room features soft pastel hues and is adorned with Victorian-inspired furnishings such as chesterfields and tufted chaises. These meticulous details blend comfort and style, creating a sense of nostalgia that aligns perfectly with the Victorian theme. The property's restoration process has been painstakingly carried out to retain the architectural beauty and historical significance, resulting in an ambiance that is both inviting and elegant.





THE BEST AMERICAN MADE LEATHER FURNITURE!

At Adobe Interiors we understand the importance of high-quality leather home furnishings. As one of the best western furniture stores in Texas, we offer a variety of leather pieces that you will love.

WWW.ADOBEINTERIORS.COM

Adobe
INTERIORS



In the realm of dining, Elgin Hall takes pride in presenting a meticulously curated culinary journey that seamlessly combines traditional North Indian delicacies with global influences. Collaborating with expert local chefs who possess a profound understanding of international gastronomy, the property also champions local businesses. The tearoom at Elgin Hall invites guests to partake in the timeless British tradition of high tea. With a selection of the finest teas, complemented by floral upholstery and classic English teacups, the tearoom exudes an atmosphere of old-world luxury and tranquility. Whether you're drawn to the natural beauty of the surroundings, the colonial charm of the property, or the promise of thrilling adventures, Elgin Hall is the quintessential destination that guarantees an immersive and unforgettable experience right in the heart of Dalhousie.

Meticulously Designed Space

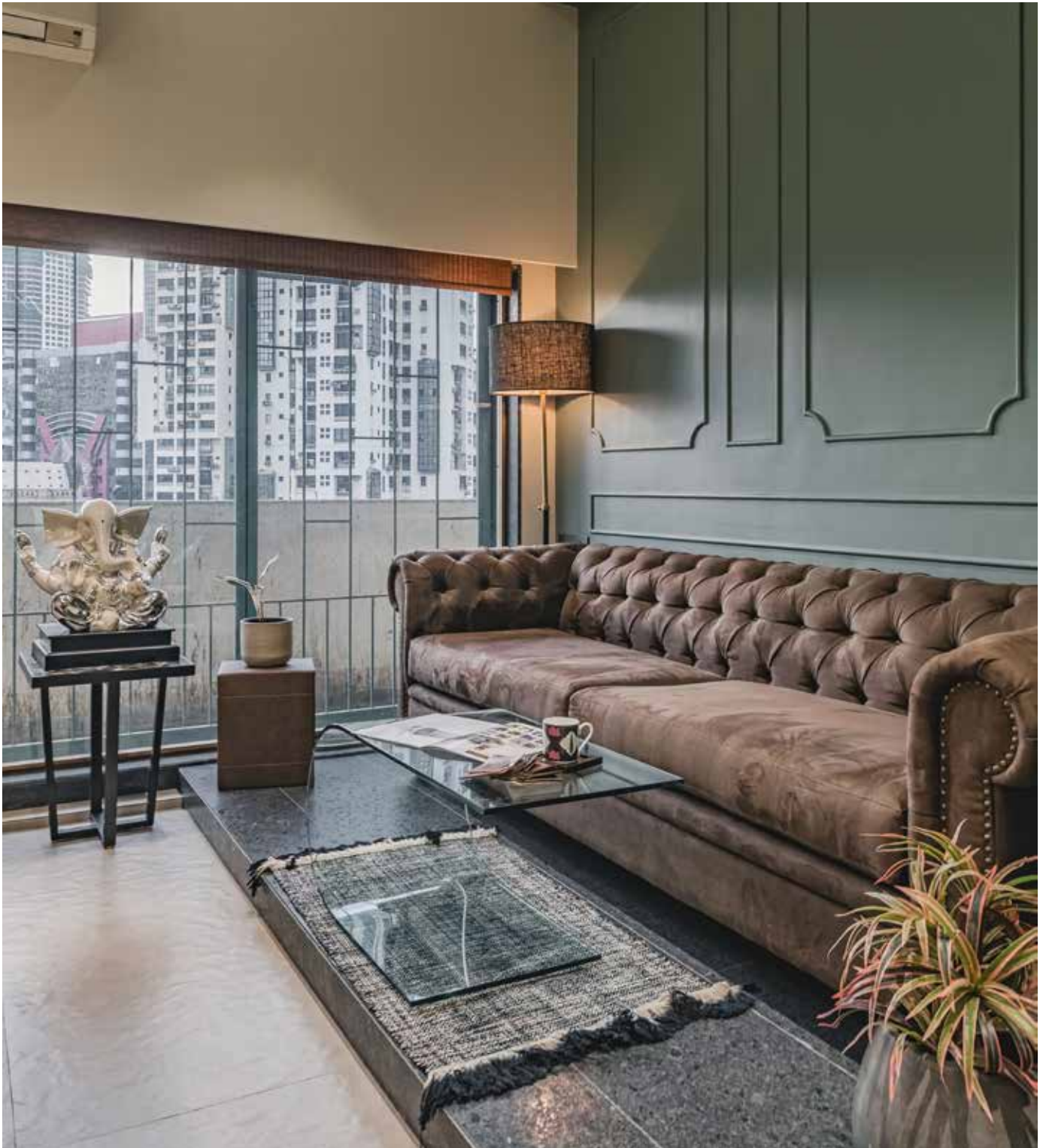


Shibani Mehta masterfully combines classic and modern aesthetics, along with intricate decorative moldings, traditional art pieces, and exclusive furniture for this office in Mumbai.

Admired for her innovative design approach, Shibani Mehta, Principal Designer at Naksh Design Studio took on the challenge of revamping a 750 sq. ft. office space with the client's sole request being abundant storage. In this project, Shibani had complete creative authority over the interior design, a task she wholeheartedly embraced.







The entire office layout was meticulously planned by Shibani as the client transitioned to a smaller office due to a change in their business line. The design theme features a classic touch in the main cabin and a modern look in the workstations. However, the defining feature of the space is its impressive height.

Shibani adhered to Vastu guidelines in designing the entire office. She shifted the main entrance door from the right to the left to accommodate the North-West corner for the cabin.

Upon entering the office, you encounter a reception, pantry, and lunch area in an open, interconnected space. What's distinctive is the mezzanine designed in a unique way, with a platform that connects to step liners. The base of the mezzanine blends seamlessly with the counters, and metal steps lead to a small elevated area.



Shibani's design ingeniously divides the space between the reception and the workstation using white arches that also serve as the central workstation. Ample storage is available on both sides of the central workstation.

"The main cabin exudes a captivating fusion of classic elegance, incorporating elements such as decorative moldings, traditional artwork, luxurious chesterfield sofas, and stately furniture. In contrast, the bathroom introduces a modern twist with its patterned tiles. On the other hand, the main workstation area embraces a sleek and contemporary look characterized by clean lines and modern design elements. What unite these distinctive styles is the presence of arches at the entrance and the thoughtful integration of patterned tiles, serving as a cohesive thread that ties together the diverse aesthetics of this space," Shibani explains.

As you enter the main cabin, a complete gold fluted partition catches your eye. The glass partition opens into the main cabin area, which features a casual seating area and a small reading corner. The layout is skillfully designed, with each space functioning separately yet remaining interconnected.

In line with the client's request, Shibani has designed a mezzanine area for server storage, providing ample height and a sense of security. Bamboo, connected to the gold partition, adds an interesting dimension to the main cabin. Linear suspended lighting enhances the space, making the most of its height.

Key design elements include the green paint color at the entrance, complemented by POP molding and a yellow patterned tile, which breaks up the arches and gives the room a distinctive identity. Formicain brick paneling in red and green provides a cleanable and durable solution. Plants and succulents are strategically placed at the entrance and in the main cabin, adding vitality and colour to the space.



The presence of arches adds character to the layout, while patterned tiles and textured surfaces from Asian Paints contribute to the modern feel of the office. The space is adorned with unique artifacts, metal sculptures, and bold and colorful artwork, adding personality and vibrancy to the entire workspace.

Material Details:

Concrete: Asian paints concrete texture & paint textures.

Glass: Fluted CNR Glass

Flooring: Graffiti tiles & Bella casa

Furnishing: In-house furniture

Furniture: In-house furniture

Lighting: V light

Paint: Asian paints

Art/Artifacts: Existing inventory

Perfect Fusion of Luxurious Decor and Verdant Greenery

Architect Sonali Bhagwati has designed an awe-inspiring residence in Camellies, where the breathtaking surroundings harmoniously unite with the luxurious interiors.

Critically-acclaimed Senior Architect Sonali Bhagwati, Principal Architect, Design Plus Architecture needs no introduction. She has contributed incredible landmark structures and designed trendsetting interiors over the years. For this project located in Camellies, one of the plush townships, Sonali Bhagwati is assisted by Atul Sharma and Niharika Kadyan together they have designed a trendsetting apartment.

Nestled within the sprawling expanse of a bare shell condominium, a blank canvas awaiting transformation, lays the seeds of a truly remarkable design journey meticulously crafted by Ar. Sonali Bhagwati and her team at Design Plus Architecture. It was here that the discerning clients envisioned their dream abode, an embodiment of their aspirations and a testament to their unique lifestyle. This design narrative unfolds in the heart of Gurugram where every detail, every material, and every concept converge to create an unparalleled living experience.

In a vast 9,500 sq. ft. of empty space, the breathtaking view of the adjacent golf course is framed by a generous balcony. "This view immediately became the heart of their home, a space that would be maximised and celebrated" explains Sonali Bhagwati. With a mere requirement for three bedrooms, the emphasis was laid on elevating the living spaces, where the language of design would create an environment of comfort, functionality, and aesthetics.

Upon entering the home through the lift lobby, a unique architectural concept was introduced. A door on the right led to the private family spaces of the home, including the bedrooms. This area could be discreetly closed off, offering a sense of privacy. On the other end lay the expansive public spaces, including the living room, dining room, lounge, puja room, kitchen, home office, and a dedicated entertainment space.







The vision for these public spaces was clearly to have an open, uncluttered ambiance that encouraged fluidity and flexibility. These areas were envisioned as interconnected zones, allowing for easy transitions between various functions. A sense of openness permeated, avoiding the confines of compartmentalization.

The design philosophy focused on providing an environment where family and friends could naturally gravitate towards different activities, whether watching TV, engaging in conversation, or enjoying music. An extensive music zoning system was integrated into the living, dining, and balcony areas, offering a diverse range of musical genres tailored to the ambiance of each zone.

Decorative lighting played a pivotal role throughout the house in infusing character and identity into each room. While architectural lighting set the overall tone, decorative fixtures added personality and uniqueness. The design language remained contemporary, marked by minimalism and tonal elegance. Neutral shades and textures dominate, creating a harmonious blend of tranquility and sophistication.





The entrance of the home and the lift lobby is characterised by exclusive furnishings that serve as transition spaces that make a bold impact. With striking flooring and elaborate wall treatments, these areas offer a visual prelude to the grandeur that awaits within. "This design journey was a testament to luxury and uncompromising vision. Every aspect, every element, bore the hallmark of thoughtful consideration and precise execution. It was a canvas where aspiration met realization, where lifestyle found its architectural expression," says Sonali.

In a space that celebrated minimalism and contemporary aesthetics, the master bedroom was the exception. Inspired by the opulence of Versace, it embraced patterns, colours, and a design language synonymous with the brand. The bathroom, in particular, embodied the essence of Versace, with a mesmerising Medusa inlay forming the floor's centrepiece. Black, gold and beige hues enriched the bathroom, seamlessly merging Versace's opulence with contemporary design sensibilities. A prominent feature of the home was the stunning light installation in the living area—a Pressyosa that captivated the entire room. It served as a focal point, dividing the living space into two distinct seating arrangements while providing ambient lighting that beautifully illuminated the space.

The concept soared beyond the bounds of tradition, enthusiastically embracing the age-old principles of *Vastu* with a modern twist, infusing new life into ancient wisdom! The master bedroom, traditionally reserved for the golf course view, now found its place on the road-facing side.







This transformation allowed for the creation of two smaller rooms that would later be unified into a single, luxuriously spacious master suite. This suite became a sanctuary, featuring a sprawling walk-in wardrobe and a lavishly appointed bathroom.

In the world of design, it is a rare privilege to collaborate with clients who are not only visionaries but also fully trust the designers in the creative process. This project was a testament to such collaboration—an artful symphony composed of aspirations, design acumen, and meticulous execution. Here, the design narrative unfolds as a celebration of aesthetics, functionality, and, above all, the essence of contemporary luxury!

Sculptural Design

Architect Pooja Bihani has crafted an avant-garde residence inspired by the forms and colours of Bauhaus design.



Renowned architect Pooja Bihani, the Principal Architect and Founder of Spaces & Design, has designed an innovative residence named “Upstairs” spanning across an impressive 2,100 square feet (split over three levels) in Kolkata. Pooja Bihani is known for her innovative design sensibilities and has lent her creative touch to numerous projects.

“This home designed for a young couple, who are well-travelled

wanted their home to be trendy. They desired for a home that is unique at the same time wanted the space to reflect their lifestyle and persona through the narrative of soft curves and Bauhaus inspired forms and colours.” informs Bihani, the Principal Architect and Founder of Spaces & Design.

This residence has a unique space configuration, where the home is split-level into three levels with an area of around

700 sq ft each, wherein there is a connection between different levels offering an unobstructed view of each floor. Hence, the staircase here acts as a connecting link and as a physical barricade between two levels. Since it is a split level, therefore half flight staircases are used, making them a standout element of the design.

As mentioned above, the staircase is the highlight of this home that is being accentuated to render a soft, seamless and curvy finish. It acts as a sculptural element and a common thread that ties connects different levels.

One can admire the circular and curvilinear niches that are a widely used motif throughout the house- be it in bathrooms or walls of common areas. The client brief was to divide the different levels according to the functions. Hence, the zoning was done in a way that all the public zones or common areas like the living room, dining area and kitchen were on the first level. The servant quarters were also provided on the first level so as to maintain privacy.

The second level includes all the private rooms like the private den, master bedroom complete with a walk-in closet, a master toilet and a serene balcony. The third level comprises of the guest bedroom, kid's room and utility zone. In this case, the split level naturally allowed us to divide the spaces based on use.

The challenging aspect for the design team was dealing with the structural part as the building was quite old. "The walls were all crooked without any alignment. All the beams and columns were exposed and not in line with one another. Hence, we decided to incorporate double walls to correct the alignment and straighten the walls. This allowed us to accentuate the walls with numerous round and oval niches making the space feel more dynamic, interesting and in line with the narrative of the design. The double walling helped in saving resources and adding durability as otherwise, the process of creating niches would have increased the costs." explains Pooja.

One notes a skillful use of palette that includes single veneer used throughout the three levels. However, the







personalisation of spaces is done to some degree to avoid monotony and add to the character of the rooms. The Jade green colour lends youthful look and accentuates the contemporary look of the space. A lot of curved furniture and black charcoal finish were used with customised door handles and hand-painted niches, making the entire space seem cohesive and guided by a singular design narrative.

"The staircase was cast on-site and made with in situ terrazzo bringing in an organic handmade feel. It was a lengthy and laborious process that turned out really well in the end. The foyer was characterised by a rust coloured wooden door leading to a buffer space which offers a view of the entire expanse of the house," says Pooja.

The walls of the powder room on the second level are accentuated by the quirky minion sketches adding to the youthful energy of the interiors. A door leads to the quaint den area which is highlighted through nine round niches used for displaying books or other knick-knacks. There is a bespoke sofa seating from where one can watch TV. Beyond the sofa set is the study space offering a cosy area to work and lounge.

The master bedroom has a jade green colour scheme as well. It consists of sliding doors that lead to the balcony. "The balcony was created in an effort of aligning the whole geometry because it was an irregular triangle shape. We made a nice standing balcony with some lanterns and greenery in there. There is a large walk-in for the couple including the toilet." Explains Pooja.

The walls along the staircase leading to the third level are







punctured to display various curios. On the left is the utility which was stationed right at the top level so that it doesn't disturb the everyday living and on the farther end towards the right, is the guest room. Again, the guest room carries the vibes of the house, with the characteristic jade green. The round walling here ingeniously conceals the wardrobe space. A spacious toilet with high-lined tiles, a shower space and a large basin adds to the elegance. So within the structural constraints, we could manage a lot of stuff just by meticulous planning.

In front of the guest room is the kid's room or to-be kid's room. It is not personalized yet but is highlighted by a canopy bed and a bathroom made in terrazzo.

Pooja Bihani, adds, "This whole project is very dear to me. It's because I grew up in a house which had a split level. And for me, the whole thing of the connectivity, the visual connection of all levels, through other levels with a half flight staircase was something which I grew up in my maiden home back in Kolhapur. Somehow, uncannily or psychologically, the mind related to that and that is why the staircase was given probably so much importance and it turned out the way it turned out. It was indeed a showstopper and, hence, true to its name – Upstairs."

The entire project was completed during lockdown and was designed within a tight budget. It plays on the split level adding to the sculptural quality of the staircase and uses a distinct design solution of double walling to resolve structural defects and make the space more evocative through characteristic niches. The project makes the most of all the merits and demerits that the site offered and turns them into a bespoke interior solution.

Project Details:



Design Team: Pooja Bihani ,Anjana , Samrat Roy

Principal Architect: Pooja Bihani

Furniture : bespoke on site, imagination unlimited , NH48

Furnishings: Skipper Furnishings , Rugs from Jaipur Rugs

Lighting: Aeris Global, bespoke lighting by Lumiere and Marici Kolkata

Paints: Asian paints

Art consultant: The Artemist

Interscapes: The Finishing Touch

Photo credits: Ishita Sitwala

Interior Styling : Samir Wadekar

Sanctuary of Comfort



Designed by Studio Mestry this abode in Mumbai combines classical design elements with modern luxury, resulting in a harmonious blend of opulence and comfort.

This tranquil 1,200 sq. ft. home located in Santacruz, Mumbai is a well-designed space that brews a traditional identity while remaining modern in its conception. A project designed by Akshaya Mestry, Principal Architect of Studio Mestry, redefines the art of living by seamlessly integrating personal narratives, history, traditions, and beliefs into bespoke spaces that stand as living testaments to the enduring threads of the clients' lives. A young, multidisciplinary design firm based in Mumbai and Pune, Studio Mistry's Designs are centred around simplicity, functionality, and focus on essential elements. Conceptualized in early 2018, the firm believes in providing client-centric design solutions by perfecting the details and transforming sites into beautiful livable spaces.



The client's vision was to create a timeless, soothing, and comfortable living space that spells sophistication. Sharing the client's brief, Akshaya, says, "In a concrete jungle that never sleeps, our clients Sujata Biswas, Co-founder of Suta and her husband Siddharth who reside here with their parents and their son wanted a home that exudes tranquility and tradition. This residential space is a marriage of vintage charm and quirks with traditional details woven in seamlessly. The clients had a set of antique furniture and artefacts given to them by their grandparents. But since they wanted the comforts of a modern lifestyle, they needed our expertise to create a balance between the old and the new."

The original layout had 2 separate apartments which are now combined into a 4BHK residence. The space comprises an open plan living room, dining area with an open kitchen which one arrives into through an entrance foyer. Adjacent to these areas is the master bedroom and a study cum yoga room. A linear corridor connects the dining to the parent's room and along the corridor on one side is the children's bedroom.

The cane screen at the entrance opens into the living space that features a beautiful traditional low-height seating nook, adorned with two vintage wooden columns on the side. Akshaya adds, "We selected curvy wooden loose furniture pieces, such as the living room sofa and round coffee table set, and used off-white textured paint and stained dark wood highlights. The living space has a carpet of printed tiles laid out to add character to the space." She further explains, "The clients loved hosting parties and soirées and wanted the perfect setting to do that. Hence we decided to break the kitchen wall to turn it into an open kitchen with an island counter as it was perfectly placed next to the dining space". The combination of a window side bench, the raw live edge wooden dining table and chairs, the bamboo decorative lighting against a wallpapered arch as the backdrop really sets a beautiful social space for the family.

Keeping the brief in mind, the team at Studio Mestry designed a minimal, uncluttered home that features a clean and understated design, with an emphasis on functionality and creating a sense of openness and timeless elegance. The home has a warm and inviting backdrop and it's predominantly the straight lines and smooth curves with traditional elements because of which the old and new blend and co-exist together. The residence is adorned with minimal details and a neutral color palette of white, beige, grey and sage green. Natural materials such as wood, stone, and cane are used to add texture, while wallpapers with tropical imagery and traditional motifs add visual interest to the spaces.

Akshaya further informs, "We kept three important principles in mind while designing the house. Open plan, Natural Light and Ventilation - Fluid spaces for the living area with visual connection across the home and opening up walls to get in tons of natural light. Simplicity - optimal use of existing spatial elements and natural finishes to retain the old world charm and lastly Materiality - Using materials like cane, lime plastered walls in combination with wooden elements & furniture pieces throughout the space which bring in so much character." Plants and other natural elements are incorporated to add a touch of life and vibrancy.

The designers have opted for warm lighting throughout the home to highlight the warm textures used. "Decorative lighting was custom designed by Luuma for all the cane lights and we also made a paper mache ceiling lamp for the main living area in the house," says Akshaya. The home is a mix of custom-designed furniture, some sourced items, and some existing pieces that hold sentimental value for the clients. The team has spent a lot of time crafting different elements for the home: the low window seating, partition screens, beds and all other loose furniture pieces were tailor-made to co-exist with their old antique furniture, all within the comforts of their modern lifestyle. "We are especially proud of the curved bar unit and the traditional low-height seating nook which was constructed from scratch on-site", says Akshaya.







Badeloft's white freestanding bathtubs is made from a unique stone resin that combines all-natural limestone and marble, which adds to the high-quality look and feel. An acrylic polymer is applied to provide extra durability and an even longer-lasting sheen. In addition to its vibrant aesthetic, stone resin provides many benefits, namely high durability and heat retention. High heat retention results in more enjoyable bathing experiences and drastically reduces your water usage during bathing. Each of our soaking tubs is engineered to be a vibrant centerpiece in your bathroom for years to come.



Sustainability being the need of the hour, Studio Mestry as a practice has started making a conscious effort to recycle and repurpose the waste that comes out of their sites. For this home, they experimented with lights made from the wastage collected on site. This included old discarded ply, wood, and newspapers.

The success of this project is also attributed to the remarkable collaboration between the client and the design team. Despite the customization and attention to detail, the project was executed with remarkable swiftness. Akshaya rejoices over the sheer satisfaction of working on this project. "It was a truly rewarding experience to bring the client's vision to life and transform this space into an inviting home," she concludes.

Fusing Style with Perfect Harmony

Keerthi Tummala's residence named 'LUNA' is a multilayered city apartment blending timeless Yin Yang principles and contemporary Living.

Keerthi Tummala's 'LUNA' is a testament to the harmonious interplay between the Yin and Yang aspects, seamlessly merging the realms of old and new within its walls. Like the ancient symbol of Yin and Yang, this 3,100 sqft apartment in the midst of Hyderabad encapsulates the duality of contrasting elements, creating a captivating balance that transcends time. Having lived in the same apartment for a decade, Keerthi and her husband wanted to refurbish the space into a home that reflects the couple's personalities.

"The approach we took blends the past and the present, infusing the space with our love for master craftsmanship and allowing for individual expression. Over the years, we have collected unique objects and artworks that enrich the spaces, reflecting our deep appreciation for artistry and craftsmanship. Furthermore, antique furniture passed down through generations finds its perfect place in our home, seamlessly blending with elements that speak of different eras" says Keerthi Tummala, Founder and Creative Director, Sage Living.



Drawing inspiration from the Yin principle, the space embraces the richness of history and tradition. Vintage trinkets, cherished heirlooms, and restored furniture pieces passed down through generations find their perfect place in this abode. Each artifact tells a story, weaving a tapestry of ancestral heritage and personal connections. The meticulously curated vintage cabinet, with its restored splendour, stands as a tangible reminder of the past, symbolizing the reverence for craftsmanship and preserving the beauty of family heirlooms. In perfect harmony with the Yang aspect, the 'LUNA' also embraces the allure of modernity and innovation. It gracefully integrates contemporary elements, captivating the essence of newness and pushing the boundaries of design. The eclectic colours and patterns in the artfully decorated living room showcase a fearless embrace of individuality, while the furniture pieces from her own label 'WA Bespoke and Sage Living' add a touch of contemporary flair. This intentional blend of old and new reflects the couple's appreciation for both timeless elegance and the excitement of the present.







As one enters the home, they are met with the foyer which is a bright and roomy space with Oxford striped walls and dark wooden details which leads to the living room. This artfully decorated space has a “more is more” philosophy, an expansive collection of eclectic colours and patterns, and historic Roman cityscape artwork. Exuding an air of intrigue and individuality, the home showcases a range of captivating elements. From the exquisite vintage cabinet to the iconic dining table and the intricately designed Sabyasachi textile doors of the pooja room, nothing within its walls is ordinary or predictable.

The master bedroom is a luxurious and relaxing space designed with beautiful materials to create a sense of grandeur and comfort. The Gloria bed in brass patina finish serves as a striking focal point, complemented by textured wooden wall panelling and jute elements. The flooring features brass inserts for a cohesive look. The study table and chair, restored pieces in black rosewood, hold sentimental value and evoke nostalgic memories of Keerthi’s grandfather. The parents’ bedroom on the other hand is designed to have a light-filled tropical ambience. The Udra bed, inspired by ocean waves, takes centre stage with its fluidic forms and curves, bringing a soft and feminine touch to the space. The room incorporates a cherished family heirloom and captivating artwork to add character and a sense of personal touch.



The couple's 10-year-old countryside kitchen received a makeover by transitioning to an all-pastel blue theme, accentuated with a teal backsplash inspiring a desire to cook. The love for mixing and matching can be observed throughout every room in the apartment, reflecting the couple's penchant for creating unique combinations that exude style and personality. 'LUNA' is not merely a dwelling; it is a testament to the belief that the blending of old and new, Yin and Yang, can create a space that transcends time and captures the essence of the present moment. Keerthi Tummala's meticulous curation and design choices not only manifest her love for master craftsmanship but also honour the interconnectedness of generations, eras, and styles.

To bring the contrast between indoors and outdoors to life, the designer deliberately combined luxurious materials like brass and stone with natural elements such as jute, wood, and cane. The intention is to strike a balance between opulence and organic beauty. Just like the sun and the moon, day and night, the juxtaposition of materials like concrete and brass, wood and metal, and jute and stone reflect the underlying philosophy that seemingly opposing elements can complement each other and form a cohesive whole. These design choices not only add visual intrigue but also emphasize variation, depth, and character within the space.



Celebrating Design Excellence



SOCIETY INTERIORS and Design, India's leading architecture and interior design magazine has been a forerunner in the industry of design publications for many years. The esteemed magazine has been holding - Society Interiors & Design Competition & Awards, a Pan-India level zonal competition for the students of Architecture and Interior Design Colleges.

This all-India competition has, for 20 years now, provided students with a platform to showcase their talent in the field of architecture and design. Besides through the Society Interiors Design Competition & Awards, the magazine also felicitates architects and designers who have been constantly setting new benchmarks in their respective fields with their diverse body of work at the grand finale. Instituted way back in the year 2003 by Society Interiors & Design magazine, the event completed 20 successful years and has grown to become the most awaited event of the industry. During its 20 years' journey, the event has discovered and launched many promising names in the architecture & design business. The event serves as a unique opportunity for students to interact with top professionals of the industry, gain from guidance of professional jury who nurture and bring forth their talents and showcase it to the industry. These students also have the privilege of sharing the same platform where senior architects and designers are felicitated. The platform is huge and learning is tremendous.









The 20th edition of the Society Interiors Design Competition & Awards saw some amazing talent come forward from all the zones North, South, East and West. Hosted by 'Society Interiors & Design' magazine in association with ICE Expo, the competition culminated in an award ceremony at the gorgeous Taj Santacruz, Mumbai, and gave our young competitors a chance to mingle with some of the best and brightest in the realms of architecture, design and construction. The award show kick started with felicitating architects and design stalwarts for their path-breaking contribution in redefining the architecture and design industry, followed by the student's awards segment, the real heroes of the evening who blew the jury away with unique ideas and approaches. Taking home top honours in the product, residential and commercial categories, these students stole the spotlight of the evening. Students from JD Birla Institute who won the first commercial category say, "Society Interiors Design Competition & Awards is a great opportunity for us to showcase our talents. We feel elated that our hard work and efforts have been recognized and appreciated by the jury." Students from School of Interior Design, Rachana Sansad say, "The competition has always been recognizing budding set of bold and bright competitors. It was such a good learning experience for us. Thank you Society Interiors & Design". Students of Measi Academy of Architecture, who won the first place in product design last year, said, "Society Interiors Design Competition & Awards is an exceptional learning platform. A big thank you to all the mentors, jury and teachers who have supported and encouraged us, throughout our journey," Students from IIFT – North Delhi who won the special commendation award said, "Society Interiors Design Competition & Awards is a huge and encouraging platform for us to learn and grow. We would like to thank our teachers, mentors and the jury for guiding us and believing in us".

The competition truly celebrates excellence, rewards creativity & innovation in design and also prepares the students for bigger competition and for better future prospects.

Register for SIDCA 2024

Website: societyinteriorsdesign.com/events

Email: societyinteriorsawards@gmail.com

Instagram: [instagram.com/societyinteriorsdesign](https://www.instagram.com/societyinteriorsdesign)

Facebook: [facebook.com/societyinteriorsdesign](https://www.facebook.com/societyinteriorsdesign)

Product

Lifestyle

Contemporary Marvel

Mohh, presents the Georgia Collection—a blend of modernity, architectural finesse, and the art of fluting. This collection is a symphony of rich colours, warm wood tones, and premium metal accents, thoughtfully crafted to cater to diverse storage needs and supplemented with accent tables. Inspired by architectural structures and the resurging trend of fluting design is a visual delight. The fluted design, characterised by its elegant ridges, is artfully combined with bold and neutral colours, minimalistic hardware, and robust wooden tops, ensuring that each piece blends beautifully in all settings and yet makes a statement of its own. The collection offers a comprehensive range of furniture categories, including Sideboards, Chest of Drawers, Side Tables, Media Units, Consoles, Display Cabinets, Coffee Tables, and Bars, catering to your every furnishing need.

Website: mohh.com



Exquisite Candles

Tara Candles Celebrates the start of festivities with the launch of Mahalaxmi Lotus Prosperity Candles. The collection draws inspiration from the Goddess of wealth and fortune, Mahalaxmi, who is often depicted with a Lotus flower, symbolizing enlightenment, prosperity, and good fortune. Crafted with precision and care, these candles feature a hurricane-shaped potpourri-infused lotus that not only emanates a divine aroma but also exudes a sense of tranquillity and prosperity. Inside, you'll find a glass container holding a T-light candle that offers up to three hours of continuous lighting. What makes this product truly remarkable is that you can replace the T-light candle up to six times without compromising the shape or quality of the lotus candle. This means you can enjoy a total of 12-15 hours of continuous lighting at a stretch, making it an integral part of your daily Pooja for more than six months.

Website: taracandles.com

Luminous Lamps

Bay Window, unveils its extraordinary lighting collection. These stunning lamps are the perfect addition to your festive décor. Dedicated to curating the ideal refined lifestyle, Bay Window aims to bridge industry gaps with transformative and innovative solutions. Their latest arrivals like Sarah Floor Lamp, polyphon table lamp, umbrella ceiling lamp, anchorage table lamp and Freda Table Lamp showcase a fusion of elegance, functionality, and meticulous craftsmanship, designed to turn your living space into a stylish haven of comfort.

Phone: 96188 69911



Furnishings

Calm Slumber

Centuary Mattress, has announced the grand opening of its innovative Experience Store in the commercial hub of Velachery, Chennai. The exciting new exclusive retail destination spread across an area of 1,000 sq. ft. marks a significant milestone in Centuary Mattress's journey to redefine how consumers experience and choose their sleep solutions. The store inaugurated by JMH Aassan Maulaana, MLA, Velachery (INC) aligns with the brand's steadfast commitment to enhancing the quality of sleep and lifestyle of its customers. Centuary Mattress has designed the Velachery Experience Store to be a one-of-a-kind haven for sleep enthusiasts and seekers of comfort. The immersive retail space promises to revolutionize the mattress shopping experience, offering a unique blend of cutting-edge technology, expert guidance, and unparalleled sleep solutions.

Website: centuaryindia.com



Unparalleled Craftsmanship

Understorey, a premier Indian luxury rug brand, is all set to take centre stage. With meticulous craftsmanship and unparalleled attention to research and development, Understorey is poised to revolutionise the rug industry and become the go-to brand for discerning homeowners. The brand is set to enter the market with four distinctive collections: Kintsugi, The Moirai, First Light, and Kinetic Chroma. The collections present a range of designs from traditionally inspired motifs to striking contemporary compositions, offering homeowners a range of diverse choices executed in the highest quality. Apart from its collections, Understorey also works with buyers to create one-of-a-kind pieces.

Website: understorey.in

Enticing Display

Amidst the radiant glow of Diwali and the spirit of festivities, Mi Casa Collective warmly welcomes you to its 5th-year celebration that starts from October 24th and 25th at the Bikaner House, New Delhi. The showcase includes Fine Art, Carpets, Furniture, Soft furnishings, Decor, and Tableware from top 10 most loved brands and more-- Kika Tableware, Kaniry, Eris Home, Gado Living, Beyond Dreams, Shivan & Narresh Home, Vvyom by Suchita, Arttd'inox, Great Banyan to name a few. This year holds special significance as Mi Casa Collective celebrates its 5th year, partnering with the Make-A-Wish Foundation. The Festive edit brings together 30 handpicked brands that include Kika (Tableware), Beyond Dreams (Furniture), Kaniry (Decor) and Gado Living (Decor) to name a few. The showcase aims to be a destination for art, interiors, and spatial design inspiration. The focus is purely on the home and the intent is to bring together people who are passionate about design - be it art, interiors, or architecture.

Website: micasacollective.com



Miscellaneous

Remarkable Offering

Blum, the Austrian manufacturer of furniture fittings, has launched the AVENTOS lift up Wall Cabinet System, a revolutionary cabinet opening mechanism that has transformed the way we interact with our storage spaces. One of the key features is its ability to offer different types of opening mechanisms, such as lift-up, bi-fold, and up-and-over. Whether it's a large, heavy cabinet door or a smaller, lightweight panel, AVENTOS ensures optimal performance and effortless operation. These Austrian technologies lift up systems are the premium hardware for upper cabinets doors that easily lift up and out of the way thereby allowing complete access to the interior of the wall cabinet. Soft-close - BLUMOTION, electrical - SERVO-DRIVE, and mechanical - TIP-ON motion technologies seamlessly integrate with AVENTOS, providing touch-to-open and electrically assisted opening options as well. The AVENTOS lift up system is designed to effortlessly lift cabinet fronts, providing easy access to the contents inside. It combines smooth motion, stability, and precision engineering to create a seamless experience for users.



Email: support-in@blum.com

Functional Blinds



Deco Window's Printed Roller Blinds is the perfect answer for the discerning home-owner who wants the elegance of a curtain but the convenient operation of blinds. A versatile window covering solution that combines functionality with style, these blinds feature water-repellent fabric, ensuring durability and protection against moisture-related issues. With a 65% blackout transparency, they strike the perfect balance between natural light and privacy. For added safety, roller blinds come equipped with a child safety lock and an auto-locking mechanism. Their classic roller style lends a timeless elegance to any space, and with availability in 25 standard sizes, they can effortlessly fit various window dimensions. Roller blinds can be easily motorized for modern convenience while maintaining premium quality and long-lasting performance. Moreover, they also act as a barrier against flies and insects, enhancing the overall comfort of your interiors.

Website: decowindow.in

Stunning Silver

The Magnificent Collection of Candle Stands and Tea Light Holders by Frazer and Haws are crafted in Silver and are available in various styles. They are designed with intricate detailing and fine Silver that is bound to add grandeur and elegance to your home and will light up your surroundings. They are a perfect treat for yourself and a great gift for your loved ones this festive season. With these candle stands and tea light holders you can create a contemporary look to any living space that instantly transforms the vibe of your home.

Website: frazierandhaws.com



SMARTER PLUMBING & DRAINAGE SOLUTIONS FOR FUTURE READY SMART CITIES!

Since 1942
Supreme[®]
People who know plastics best
TOTAL PIPING SOLUTION



Download the App
Supreme Pipes
Available on the Google play App Store

Jeevan bhar ka saath...



Lifeline[®]
C-PVC Hot & Cold
Water System



**COMPLETE
WATER STORAGE
SOLUTION**



SKY RISE[®]
Hi-Tech, Low Noise,
S.W.R. Drainage system



Nu-Drain[™]
Underground Drainage
& Sewer System



SAFEGARD[®]
Septic Tanks



**AQUATIC
AQUAKRAFT**[™]
Bath Fittings

● Water Management ● Plumbing ● Drainage ● Sewerage

Explore supreme's exhaustive product range of more than 10,000 eco sensible green products & find a perfect match for your smart homes!

Salient Features: Widest range | Stronger and resilient | Excellent resistance to corrosion and chemical attacks | Perfect hydraulic properties | Simple and leak proof joints | Quick and convenient installation | Designed to last for more than 50 years | Maintenance free | Eco-friendly | Most cost effective.



Toll Free No. 1800-102-4707



91-22-4043 0000



www.supreme.co.in



pvc-pipes@supreme.co.in



GRAAND PRIX
Home Elevators & Pools



Lifting up your spirits and your standards!

Graand Prix offers high-end, luxury elevator solutions and relaxing, aesthetic swimming pools crafted to give you a blissful experience.



Customized products



Premium quality



Cutting edge technology

Contact Now

+91-808 080 8785

Graand Prix, 407, Flying Colors, Pt. Deendayal Upadhyay Marg, Mulund (W), Mumbai - 400080.

www.graandprix.com